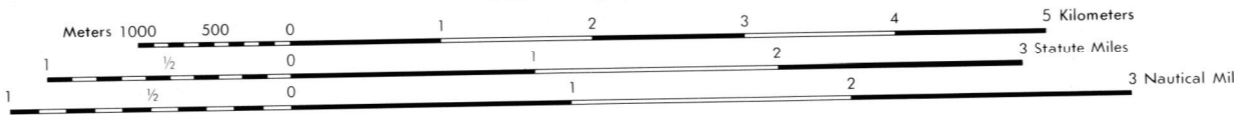


Prepared by the U.S. Geological Survey for publication by the Defense Mapping Agency Hydrographic/Topographic Center, Washington, D.C.

LEGEND

- MAP INFORMATION AS OF 1978  
ON THIS MAP, A LANE IS GENERALLY CONSIDERED AS BEING A MINIMUM OF 2.5 METERS (8 FEET) IN WIDTH IN DEVELOPED AREAS. ONLY THROUGH ROADS ARE CLASSIFIED.
- |  |  |
|--|--|
| <p><b>ROADS</b></p> <ul style="list-style-type: none"> <li>Divided highway with median strip</li> <li>Primary, all weather, hard surface</li> <li>Secondary, all weather, hard surface</li> <li>Light duty, all weather, hard or improved surface</li> <li>Fair or dry weather, unimproved surface</li> <li>Trail</li> <li>Route markers: Interstate, Federal, State</li> <li>Bridge: With superstructure, Without superstructure</li> <li>RAILROADS (Standard gauge 1.44m - 4'8 1/2")</li> <li>Single track</li> <li>Multiple track</li> <li>Nonoperating</li> <li>Railroad station, location known, location unknown</li> <li>Car line</li> <li>Railroad bridge: With superstructure, Without superstructure</li> <li>Tunnel, Highway, Railroad</li> </ul> <p><b>BOUNDARIES</b></p> <ul style="list-style-type: none"> <li>National, with monument</li> <li>State, territory</li> <li>County, parish</li> <li>Civil township, town</li> <li>Incorporated city, village, town</li> <li>Reservation, National State, Military</li> </ul> | <ul style="list-style-type: none"> <li>Power transmission line</li> <li>Buildings</li> <li>Structures</li> <li>Church, School</li> <li>Power substation</li> <li>Windmill, Watermill</li> <li>Well, Tank</li> <li>Mine shaft</li> <li>Open pit mine or quarry</li> <li>Horizontal control station</li> <li>Bench mark, monument</li> <li>Bench mark, non-monumented</li> <li>Spot elevations in meters</li> <li>Levees, rims, dikes</li> <li>Bluffs, cliffs</li> <li>Woodland</li> <li>Scattered trees, Scrub</li> <li>Vineyard, Orchard, plantation</li> <li>Intermittent lake, Dam, Earthen, Masonry</li> <li>Stream, Perennial, Intermittent</li> <li>Marsh, swamp</li> <li>Small rapids, Small falls</li> <li>Large rapids, Large falls</li> </ul> |
|--|--|

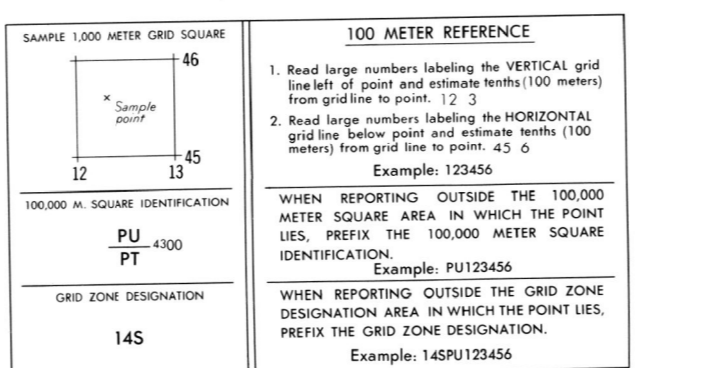


ELEVATIONS IN METERS

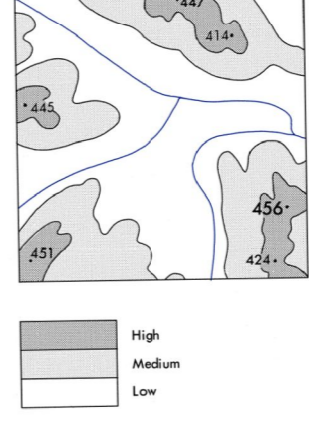
CONTOUR INTERVAL 10 METERS  
SUPPLEMENTARY CONTOURS 5 METERS

SPHEROID ..... CLARKE 1866  
GRID ..... 1,000 METER UTM ZONE 14 (BLACK NUMBERED LINES)  
PROJECTION ..... UNIVERSAL TRANSVERSE MERCATOR  
HORIZONTAL DATUM ..... NATIONAL GEODETIC DATUM OF 1929  
VERTICAL DATUM ..... 1929 NORTH AMERICAN DATUM  
CONTROL BY ..... USGS AND NOS/NOAA  
PREPARED BY ..... U.S. GEOLOGICAL SURVEY

FOR SALE BY U. S. GEOLOGICAL SURVEY, DENVER, COLORADO 80225  
OR RESTON, VIRGINIA 22092



ELEVATION GUIDE



ADJOINING SHEETS

6462 III	6462 II	6562 III
6461 IV	6461 I	6561 IV
6461 III	6461 II	6561 III

KANSAS  
1. Saline Co.  
2. Ottawa Co.

Reprinted by NIMA 9-2000

THIS MAP IS RED-LIGHT READABLE

USERS SHOULD REFER CORRECTIONS, ADDITIONS, AND COMMENTS TO THE NGA OPERATIONAL HELP DESK: 1-800-455-6899; COMMERCIAL 314-263-4864; OR WRITE TO: DIRECTOR, NATIONAL GEOSPATIAL-INTELLIGENCE AGENCY, ATTN: ES, MAIL STOP L-88, 4800 SANGAMORE ROAD, BETHESDA, MD 20818-9003.

NSN 764301 4044030  
NGA Ref No: V778X64611