

Prepared by the U.S. Geological Survey for publication by the Defense Mapping Agency Hydrographic/Topographic Center, Washington, D.C.
 MAP INFORMATION AS OF 1983.

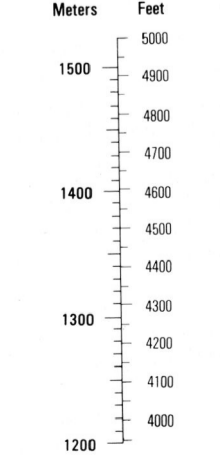
LEGEND

CAUTION: ALL TELEPHONE AND ELECTRIC SERVICE LINES ARE NOT SHOWN.
 A LANE ON THIS MAP IS CONSIDERED TO BE 2.5 METERS WIDE.
 IN DEVELOPED AREAS ONLY THROUGH ROADS ARE CLASSIFIED.
 THERE MAY BE PRIVATE INHOLDINGS WITHIN THE BOUNDARIES OF THE NATIONAL OR STATE RESERVATIONS SHOWN ON THIS MAP.

	Power transmission line
	Buildings
	Structure
	Church, School
	Power substation
	Windmill, Watermill
	Well, Tank
	Mine shaft
	Open pit mine or quarry
	Naturalist control station
	Bench mark, monumented
	Bench mark, non-monumented
	Spot elevations in meters
	Leaves, rims, dikes
	Bluffs, cliffs
	Woodland
	Scattered trees: Scrub
	Vineyard, Orchard, plantation
	Intermittent lake, Dam, Earthen, Masonry
	Stream: Perennial, Intermittent
	Marsh, swamp
	Small falls; Large falls
	Small rapids; Large rapids

CONVERSION GRAPH

(1 meter = 3.28 feet)



ELEVATIONS IN METERS

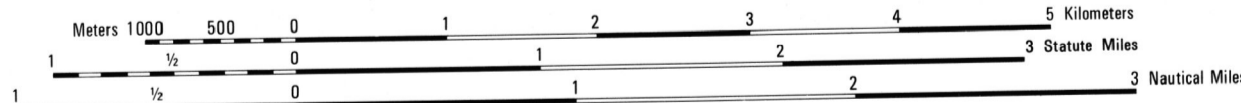
CONTOUR INTERVAL 10 METERS

SPHEROID CLARKE 1866
 GRID 1000 METER UTM ZONE 13
 PROJECTION TRANSVERSE MERCATOR
 VERTICAL DATUM NATIONAL GEODETIC DATUM OF 1929
 HORIZONTAL DATUM 1927 NORTH AMERICAN DATUM
 CONTROL BY GEODESIC AND NADICONS
 PREPARED BY U.S. GEOLOGICAL SURVEY

Reprinted by MMA 3.00

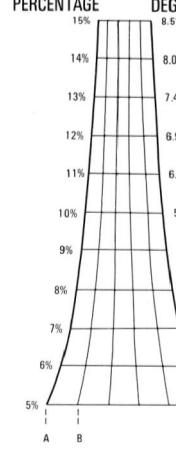
	100 METER REFERENCE
1. Read large numbers labeling the VERTICAL grid line left of point and estimate tenths (100 meters) from grid line to point. 12.3	Example: 123456
2. Read large numbers labeling the HORIZONTAL grid line below point and estimate tenths (100 meters) from grid line to point. 45.6	Example: FM123456
3. When reporting across a 100,000 METER LINE, PREFIX THE 100,000 METER SQUARE IDENTIFICATION IN WHICH THE POINT LIES.	Example: 13SFM123456

USERS SHOULD REFER TO CORRECTIONS, ADDITIONS, AND COMMENTS TO THE NGA ENTERPRISE SERVICE DESK: 1-800-405-0899; COMMERCIAL: 301-727-9011; 24 HOURS: 301-727-9011. UNCLASSIFIED EMAIL: ENTERPRISESERVICE@CENTERSFOR.MIL; SIPRINT: 620203C@USDA.SMIL.MIL; OR WRITE TO: DIRECTOR, NATIONAL GEOSPATIAL INTELLIGENCE AGENCY, ATTN: ESC, MAIL STOP D-240, 4600 SANGAMORE ROAD, BETHESDA, MD 20814-6000.



THIS MAP IS RED-LIGHT READABLE

SLOPE GUIDE



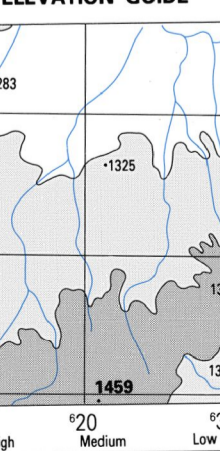
BOUNDARIES



ADJOINING SHEETS

5260 II	5260 III	5300 III
5259 IV	5259 I	5309 IV
5258 II	5258 III	5308 II

ELEVATION GUIDE



NSN 7643014056292
 NGA Ref No. V777X52591
 ED NO 001