

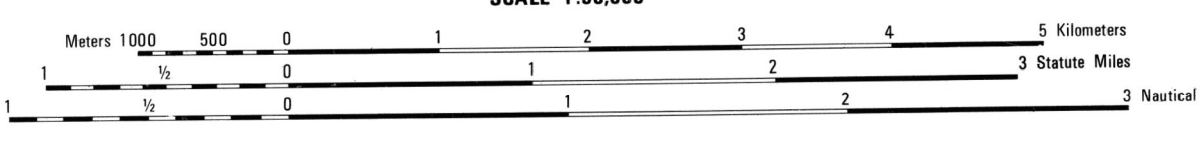
Prepared by the U.S. Geological Survey for publication by the Defense Mapping Agency Hydrographic/Topographic Center, Washington, D.C.
 MAP INFORMATION AS OF 1983.



LEGEND

CAUTION: ALL TELEPHONE AND ELECTRIC SERVICE LINES ARE NOT SHOWN.
 A LANE ON THIS MAP IS CONSIDERED TO BE 2.5 METERS WIDE.
 IN DEVELOPED AREAS ONLY THROUGH ROADS ARE CLASSIFIED.
 THERE MAY BE PRIVATE INCLUSIONS WITHIN THE BOUNDARIES OF THE NATIONAL OR STATE RESERVATIONS SHOWN ON THIS MAP.

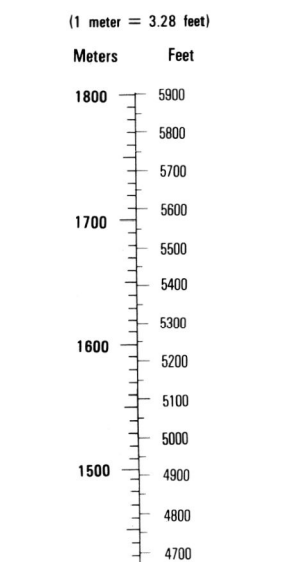
	Power transmission line



ELEVATIONS IN METERS

CONTOUR INTERVAL 20 METERS

CONVERSION GRAPH



SHERIDAN CLARK 1980
 GRID 100,000 METER UTM ZONE 13 (BLACK NUMBERED LINES)
 PROJECTION TRANSVERSE MERCATOR
 VERTICAL DATUM NATIONAL GEODETIC VERTICAL DATUM OF 1959
 HORIZONTAL DATUM 1927 NORTH AMERICAN DATUM
 CONTROLS BY U.S. AND NOS/NOAA
 PREPARED BY U.S. GEOLOGICAL SURVEY

Reprinted by NIMA 3-00

FOR SALE BY U.S. GEOLOGICAL SURVEY
 DENVER, COLORADO 80225, OR RESTON, VIRGINIA 22092

100 METER REFERENCE

1. Read large numbers labeling the VERTICAL grid line left of point and estimate tenths (100 meters) from grid line to point 12.3

2. Read large numbers labeling the HORIZONTAL grid line below point and estimate tenths (100 meters) from grid line to point 45.6

Example: 12345.6

WHEN REPORTING ACROSS A 100,000 METER LINE, PREFIX THE 100,000 METER SQUARE IDENTIFICATION IN WHICH THE POINT LIES.

Example: EM123456

100 METER REFERENCE

1. Read large numbers labeling the VERTICAL grid line left of point and estimate tenths (100 meters) from grid line to point 12.3

2. Read large numbers labeling the HORIZONTAL grid line below point and estimate tenths (100 meters) from grid line to point 45.6

Example: 12345.6

WHEN REPORTING ACROSS A 100,000 METER LINE, PREFIX THE 100,000 METER SQUARE IDENTIFICATION IN WHICH THE POINT LIES.

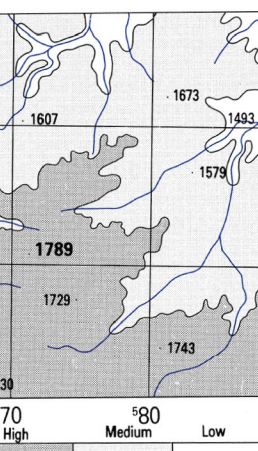
Example: 135EM123456

USERS SHOULD REFER TO CORRECTIONS, ADDITIONS, AND COMMENTS TO THE NIMA CUSTOMER HELP DESK: 1-800-455-6869; COMMERCIAL 314-269-5622; DSN 480-8022; OR WRITE TO: DIRECTOR, NATIONAL IMAGERY AND MAPPING AGENCY, ATTN: CDD, MAIL STOP P-37, 4800 SAIGAMORE ROAD, BETHESDA, MD 20815-5003.

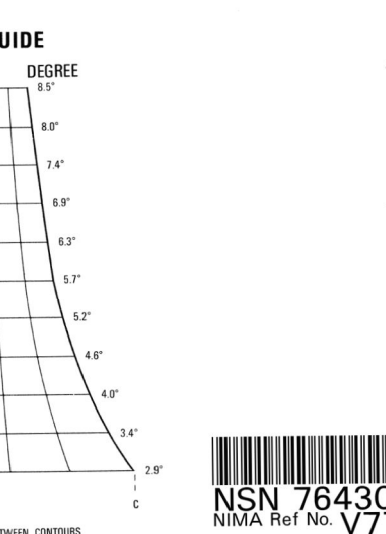
BOUNDARIES **ADJOINING SHEETS**

1	2	3
5159 IV	5159 I	5159 IV
5159 III	5159 II	5159 III
5159 IV	5159 I	5159 IV

ELEVATION GUIDE



THIS MAP IS RED-LIGHT READABLE



NSN 7643014025831
 NIMA Ref No. V777X51592