

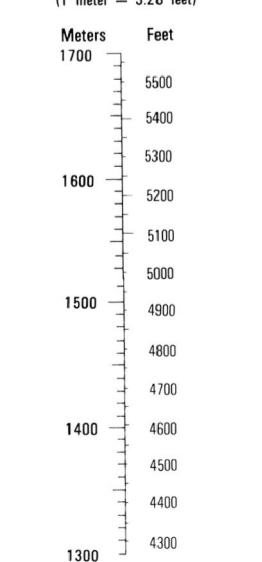
Prepared by the U.S. Geological Survey for publication by the Defense Mapping Agency Hydrographic/Topographic Center, Washington, D.C.  
 MAP INFORMATION AS OF 1983.

**LEGEND**

CAUTION: ALL TELEPHONE AND ELECTRIC SERVICE LINES ARE NOT SHOWN.  
 A LANE ON THIS MAP IS CONSIDERED TO BE 25 METERS WIDE.  
 IN DEVELOPED AREAS ONLY THROUGH ROADS ARE CLASSIFIED.  
 THERE MAY BE PRIVATE INHOLDINGS WITHIN THE BOUNDARIES OF THE NATIONAL OR STATE RESERVATIONS SHOWN ON THIS MAP.

- ROADS**
  - Divided highway with median only
  - Primary, all weather, hard surface
  - Secondary, all weather, hard surface
  - Light duty, all weather, hard or improved surface
  - Fair or dry weather, unimproved surface
  - Trail
  - Route markers: Interstate, Federal, State
  - Bridge
  - Railroads (Standard gauge 1.44m - 4'8 1/2")
  - Single track
  - Multiple track
  - Nonoperating
  - Railroad station: Location known; Location unknown
  - Car line
  - Railroad bridge
  - Tunnel: Highway; Railroad
- BOUNDARIES**
  - National, with monument
  - State, territory
  - County, parish
  - Civil township, town
  - Incorporated city, village, town
  - Reservation: National, State, Military
- Other Features**
  - Power transmission line
  - Structure
  - Church, School
  - Power substation
  - Windmill; Watermill
  - Well; Tank
  - Mine shaft
  - Open pit mine or quarry
  - Historical central station
  - Bench mark, monument
  - Bench mark, non-monumented
  - Spot elevations in meters
  - Leaves, rims, 64ms
  - Bluffs, cliffs
  - Woodland
  - Scattered trees; Scrub
  - Vineyard; Orchard; plantation
  - Intermittent lake; Dam; Earthen; Masonry
  - Stream; Perennial; Intermittent
  - Marsh; swamp
  - Small falls; Large falls
  - Small rapids; Large rapids

**CONVERSION GRAPH**



**ELEVATIONS IN METERS**

**CONTOUR INTERVAL 10 METERS**

**SPHEROID** ..... CLARKE 1866  
**GRID** ..... 1000-METER UTM ZONE 13 (BLACK NUMBERED LINES)  
**PROJECTION** ..... TRANSVERSE MERCATOR  
**VERTICAL DATUM** ..... NATIONAL GEODETIC DATUM OF 1929  
**HORIZONTAL DATUM** ..... 1927 NORTH AMERICAN DATUM  
**CONTROL** ..... U.S. AND MEXICAN  
**PREPARED BY** ..... U.S. GEOLOGICAL SURVEY

Reprinted by DMA 10-00  
 FOR SALE BY U.S. GEOLOGICAL SURVEY  
 DENVER, COLORADO 80225, OR RESTON, VIRGINIA 22092

**100 METER REFERENCE**

1. Read large numbers labeling the VERTICAL grid line left of point and estimate tenths (100 meters) from grid line to point: 12 3

2. Read large numbers labeling the HORIZONTAL grid line below point and estimate tenths (100 meters) from grid line to point: 45 6

Example: 123456

WHEN REPORTING ACROSS A 100,000 METER LINE, PREFIX THE 100,000 METER SQUARE IDENTIFICATION IN WHICH THE POINT LIES.

Example: EM123456

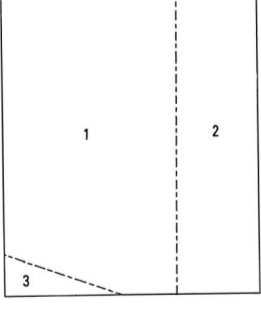
WHEN REPORTING OUTSIDE THE GRID ZONE DESIGNATION AREA, PREFIX THE GRID ZONE DESIGNATION.

Example: 18SEM123456

USERS SHOULD REFER TO CORRECTIONS, ADDITIONS, AND COMMENTS TO THE NGA OPERATIONAL HELP DESK: 1-800-455-0898; COMMERCIAL 314-263-4864; DSN 893-4864; OR WRITE TO: DIRECTOR, NATIONAL GEOSPATIAL-INTelligence AGENCY, ATTN: ES, MAIL STOP 1-86, 8600 SANDSHORE ROAD, BETHESDA, MD 20815-5003.

THIS MAP IS RED-LIGHT READABLE

**BOUNDARIES**

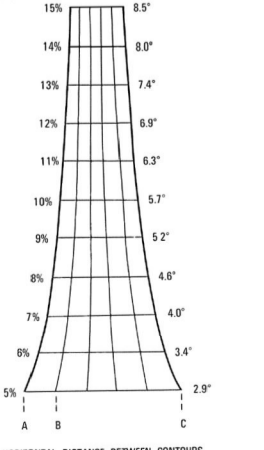


**ADJOINING SHEETS**

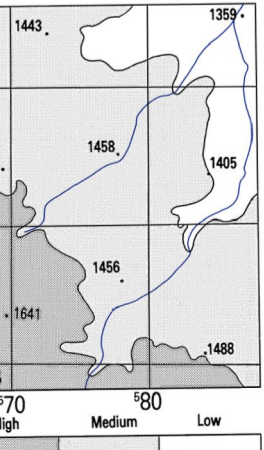
5150 III	5160 II	5160 III
5159 IV	5159 I	5159 IV
5159 III	5159 II	5159 III

Sheet 5159 I falls within NJ 124, 191, 1250, 008.

**SLOPE GUIDE**



**ELEVATION GUIDE**



USGS 37104-G1-TM-050  
 NSN 7643014056239  
 GSA GEN. REG. NO. V777X51591