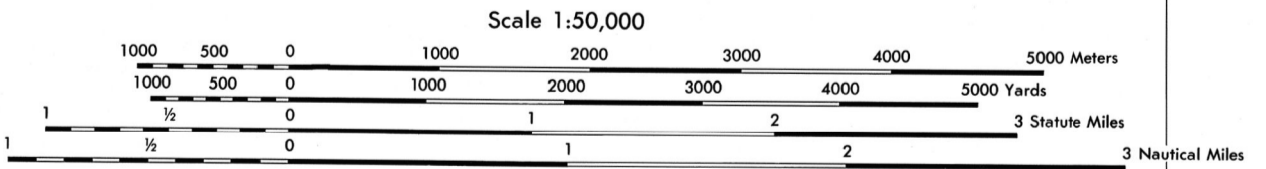


Prepared and published by the Defense Mapping Agency

ROAD DATA 1974
OTHER INFORMATION 1972

ON THIS MAP, A LANE IS GENERALLY CONSIDERED AS BEING A MINIMUM OF 8 FEET (2.5 METERS) IN WIDTH IN DEVELOPED AREAS. ONLY THROUGH ROADS ARE CLASSIFIED. TINT INDICATES BUILD-UP AREAS IN WHICH ONLY LANDMARK BUILDINGS ARE SHOWN.

ROADS	RAILROADS	BOUNDARIES	OTHER
Divided highway with median strip	Single track	National	Church/School
Primary all weather, hard surface, two or more lanes wide	Multiple track, non-operating	State, territory	Watermill
Secondary all weather, hard surface, two or more lanes wide	Railroad station, position known, position unknown	County, parish, municipio	Windmill, wind pump
Light duty, all weather, hard or improved surface	Car line	Civil township, precinct, town, hamlet	Mine, vertical shaft
Fair or dry weather, unimproved surface		Incorporated city, village, town, hamlet	Mine, horizontal shaft
Trail		Reservation, National, state, military	Open pit mine or quarry, inactive
Route markers: Interstate, Federal, State		Power transmission line	Open pit mine or quarry, active
RAILROADS (Standard gauge 4'8 1/2" - 1.44 m.)			Horizontal control station
Multiple track			Bench mark, monumented
Multiple track, non-operating			Bench mark, non-monumented
Railroad station, position known, position unknown			Spot elevations in feet: Checked, Unchecked
Car line			Woodland, scrub
			Vineyard, Orchard
			Intermittent lake, Dam
			Marsh or swamp
			Rapids, Falls
			Large rapids, Large falls



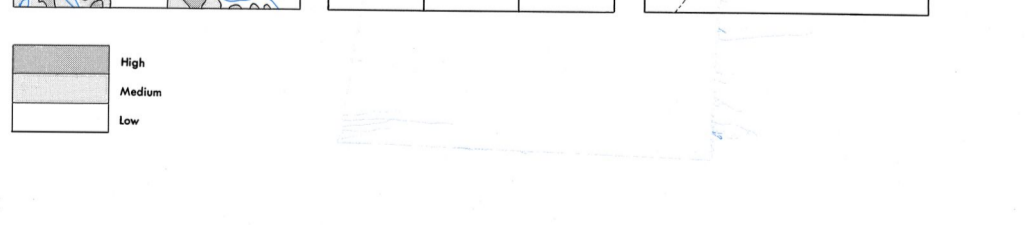
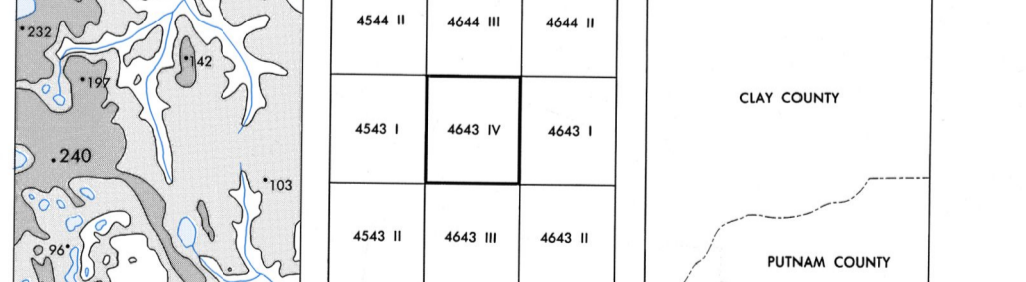
CONTOUR INTERVAL 10 FEET

SPHEROID: CLARKE 1866
GRID: 1,000 METER UTM ZONE 17 (BLACK NUMBERED LINES)
PROJECTION: TRANSVERSE MERCATOR
VERTICAL DATUM: SEA LEVEL DATUM 1929
HORIZONTAL DATUM: 1927 NORTH AMERICAN
CONTROL BY: USGS AND USCGS
PRINTED BY: DEFENSE MAPPING AGENCY

FOR SALE BY U. S. GEOLOGICAL SURVEY, RESTON, VIRGINIA 22092

100,000 METER SQUARE IDENTIFICATION	100 METER REFERENCE
MD 100	1. Read large numbers labeling the VERTICAL grid line left of point and estimate tenths (100 meters) from grid line to point.
JC	2. Read large numbers labeling the HORIZONTAL grid line below point and estimate tenths (100 meters) from grid line to point.
17R	Example: 123456
	Example: MD123456
	Example: 17RMD123456

ELEVATION GUIDE	ADJOINING SHEETS	BOUNDARIES
High	4544 II 4644 III 4644 II	CLAY COUNTY PUTNAM COUNTY
Medium	4543 I 4643 IV 4643 I	
Low	4543 II 4643 III 4643 II	



USERS SHOULD REFER CORRECTIONS, ADDITIONS, AND COMMENTS TO THE NSA ENTERPRISE SERVICE DESK: 1-800-458-8888, COMMERCIAL 301-227-0801; DSN 267-8911; UNCLASSIFIED EMAIL: ENTERPRISESERVICECENTER@NSA.MIL; SUPPORT: ESC@NSA.NGA.MIL; OR WRITE TO: DIRECTOR, NATIONAL GEOSPATIAL-INTELLIGENCE AGENCY, ATTN: ESC, MAIL STOP D-240, 4803 SANGAMORE ROAD, BETHESDA, MD 20818-5002.

NSN 7643014043916
ED. NO. 004