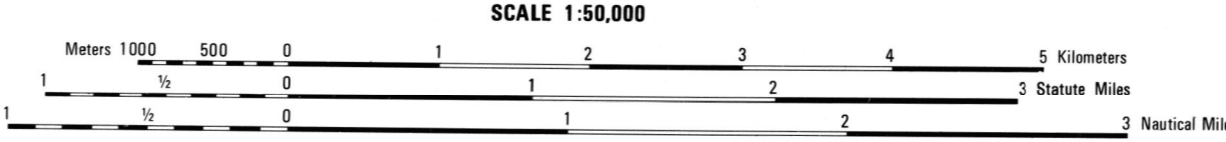


Prepared by the U.S. Geological Survey for publication by the Defense Mapping Agency Hydrographic/Topographic Center, Washington, D.C.  
MAP INFORMATION AS OF 1988.

**LEGEND**  
CAUTION: ALL TELEPHONE AND ELECTRIC SERVICE LINES ARE NOT SHOWN.  
A LANE ON THIS MAP IS CONSIDERED TO BE 2.5 METERS WIDE.  
IN DEVELOPED AREAS ONLY THROUGH ROADS ARE CLASSIFIED.  
THERE MAY BE PRIVATE ENCLAVES WITHIN THE BOUNDARIES OF THE NATIONAL OR STATE RESERVATIONS SHOWN ON THIS MAP.

- ROADS
  - Divided highway with median strip
  - Primary, all weather, hard surface
  - Secondary, all weather, hard surface
  - Light duty, all weather, hard or improved surface
  - Fair or dry weather, unimproved surface
  - Trail
  - Route markers: Interstate, Federal, State
  - Bridge
  - Railroads (Standard gauge 1.44m - 4'8 1/2")
  - Single track
  - Multiple track
  - Nonoperating
  - Railroad station: Location known; Location unknown
  - Car line
  - Railroad bridge
  - Tunnel: Highway, Railroad
- BOUNDARIES
  - National, with monument
  - State, territory
  - County, parish
  - City, township, town
  - Unincorporated city, village, town
  - Reservation: National, State, Military
- Power transmission line
- Buildings
- Structures
- Church, School
- Power substation
- Windmill, Watermill
- Well, Tank
- Mine shaft
- Dug pit, mine or quarry
- Historical control station
- Bench mark, monumented
- Bench mark, non-monumented
- Spot elevations in meters
- Levees, dikes
- Bluffs, cliffs
- Woodland
- Scattered trees, Scrub
- Vineyard, Orchard, plantation
- Intermittent lake: Dam, Earthen, Masonry
- Stream, Perennial, Intermittent
- Marsh, swamp
- Small falls: Large falls
- Small rapids: Large rapids



**ELEVATIONS IN METERS**  
CONTOUR INTERVAL 5 METERS

ELLIPSOID: CLARKE 1866  
GRID: 1,000 METER UTM ZONE 17 (BLACK NUMBERED LINES); 10,000 FOOT STATE GRID TICKS; GEORGIA (EAST ZONE); FLORIDA (EAST ZONE); TRANSVERSE MERCATOR  
PROJECTION: TRANSVERSE MERCATOR  
VERTICAL DATUM: NATIONAL GEODETIC VERTICAL DATUM OF 1929  
HORIZONTAL DATUM: 1927 NORTH AMERICAN DATUM  
CONTROL BY: USGS AND NOS/NOAA  
PREPARED BY: U.S. GEOLOGICAL SURVEY

FOR SALE BY U.S. GEOLOGICAL SURVEY  
DENVER, COLORADO 80225, OR RESTON, VIRGINIA 22092

**CONVERSION GRAPH**  
(1 meter = 3.28 feet)

|        |   |     |     |     |
|--------|---|-----|-----|-----|
| Meters | 0 | 100 | 200 | 300 |
| Feet   | 0 | 300 | 600 | 900 |

**100 METER REFERENCE**

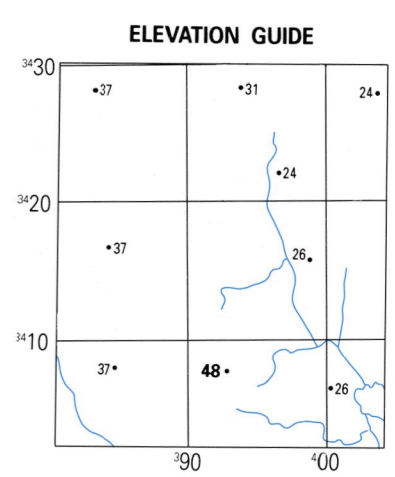
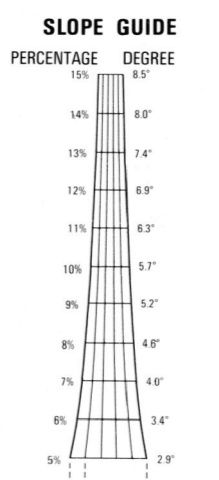
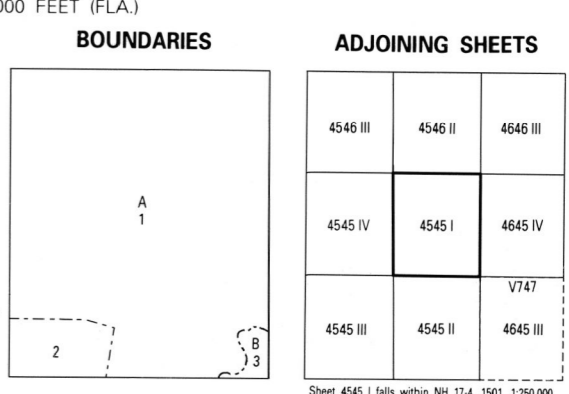
- Read large numbers labeling the VERTICAL grid line left of point and estimate tenths (100 meters) from grid line to point 12.3
- Read large numbers labeling the HORIZONTAL grid line below point and estimate tenths (100 meters) from grid line to point 45.6

Example: 123456

WHEN REPORTING ACROSS A 100,000 METER LINE, PREFIX THE 100,000 METER SQUARE IDENTIFICATION IN WHICH THE POINT LIES. Example: LE123456

WHEN REPORTING OUTSIDE THE GRID ZONE DESIGNATION AREA, PREFIX THE GRID ZONE DESIGNATION. Example: 17TLE123456

Reprinted by NIMA 10-00



THIS MAP IS RED-LIGHT READABLE