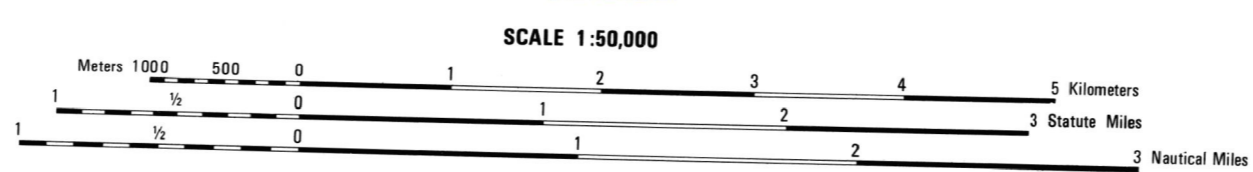


Prepared by the U.S. Geological Survey for publication by the Defense Mapping Agency Hydrographic/Topographic Center, Washington, D.C.

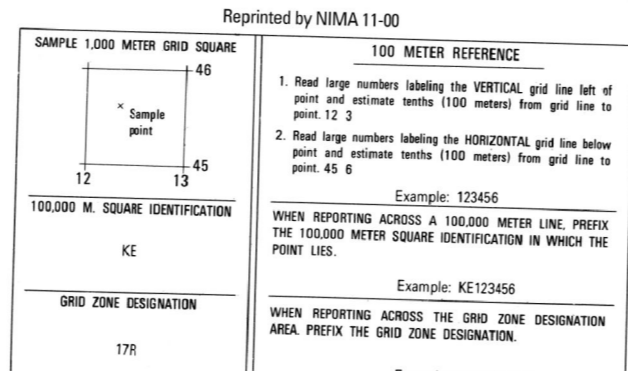


ELEVATIONS IN METERS

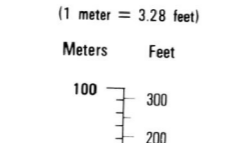
CONTOUR INTERVAL 10 METERS

ELLIPSOID: CLARKE 1886
 GRID: 1,000-METER UTM ZONE 17 (BLACK NUMBERED LINES)
 10,000-FOOT STATE GRID TICKS (GEORGIA HESH ZONE)
 PROJECTION: TRANSVERSE MERCATOR
 HORIZONTAL DATUM: NATIONAL GEODETIC DATUM OF 1929
 VERTICAL DATUM: 1929 NORTH AMERICAN DATUM
 CONTROL BY: USGS AND NOS/NOAA
 AND GEORGIA GEODETIC SURVEY
 PREPARED BY: U.S. GEOLOGICAL SURVEY
 PUBLISHED BY: DMAPIC 9-90

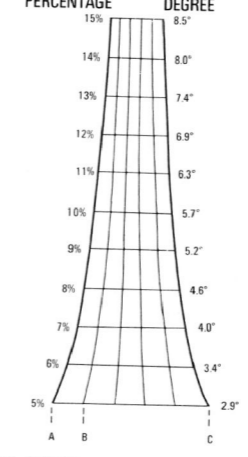
FOR SALE BY U.S. GEOLOGICAL SURVEY
 DENVER, COLORADO 80225 OR RESTON, VIRGINIA 22082



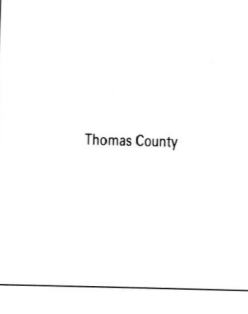
CONVERSION GRAPH



SLOPE GUIDE



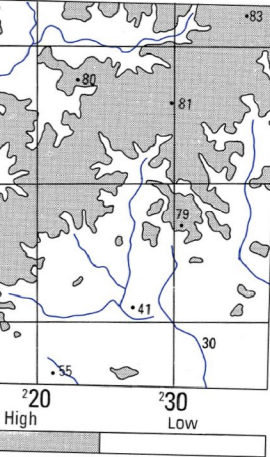
BOUNDARIES



ADJOINING SHEETS

4148 II	4248 II	4248 I
4145 I	4245 IV	4245 I
4145 II	4245 III	4245 II

ELEVATION GUIDE



- LEGEND**
- CAUTION: ALL TELEPHONE AND ELECTRIC SERVICE LINES ARE NOT SHOWN.
 A LANE ON THIS MAP IS CONSIDERED TO BE 15 METERS WIDE.
 IN DEVELOPED AREAS ONLY THROUGH ROADS ARE CLASSIFIED.
 THERE MAY BE PRIVATE ENCLAVES WITHIN THE BOUNDARIES OF THE NATIONAL OR STATE RESERVATIONS SHOWN ON THIS MAP.
- Roads: Divided highway with median strip, Primary all weather, hard surface, Secondary all weather, hard surface, Light duty all weather, hard or improved surface, Fair or dry weather, unimproved surface, Trail, Route markers: Interstate, Federal, State, Bridge, RAILROADS (Standard gauge 1.44m - 4'8 1/2"), Single track, Multiple track, Nonoperating, Railroad station: Location known; Location unknown, Car line, Railroad bridge, Tunnel: Highway-Railroad, BOUNDARIES: National, with monument, State, territory, County, parish, Civil township, town, Incorporated city, village, town, Reservation: National, State, Military
 - Power transmission line, Buildings, Structures, Church, School, Power substation, Windmill; Watermill, Well, Tank, Mine shaft, Open pit mine or quarry, Nonoperating control station, Bench mark, monument, Bench mark, non-monumented, Spot elevations in meters, Levee, rim, dike, Bluffs, cliffs, Woodland, Scattered trees; Scrub, Vineyard; Orchard; plantation, Intermittent lake; Dam; Earthed; Masonry, Stream; Perennial; Intermittent, Marsh, swamp, Small falls; Large falls, Small rapids; Large rapids