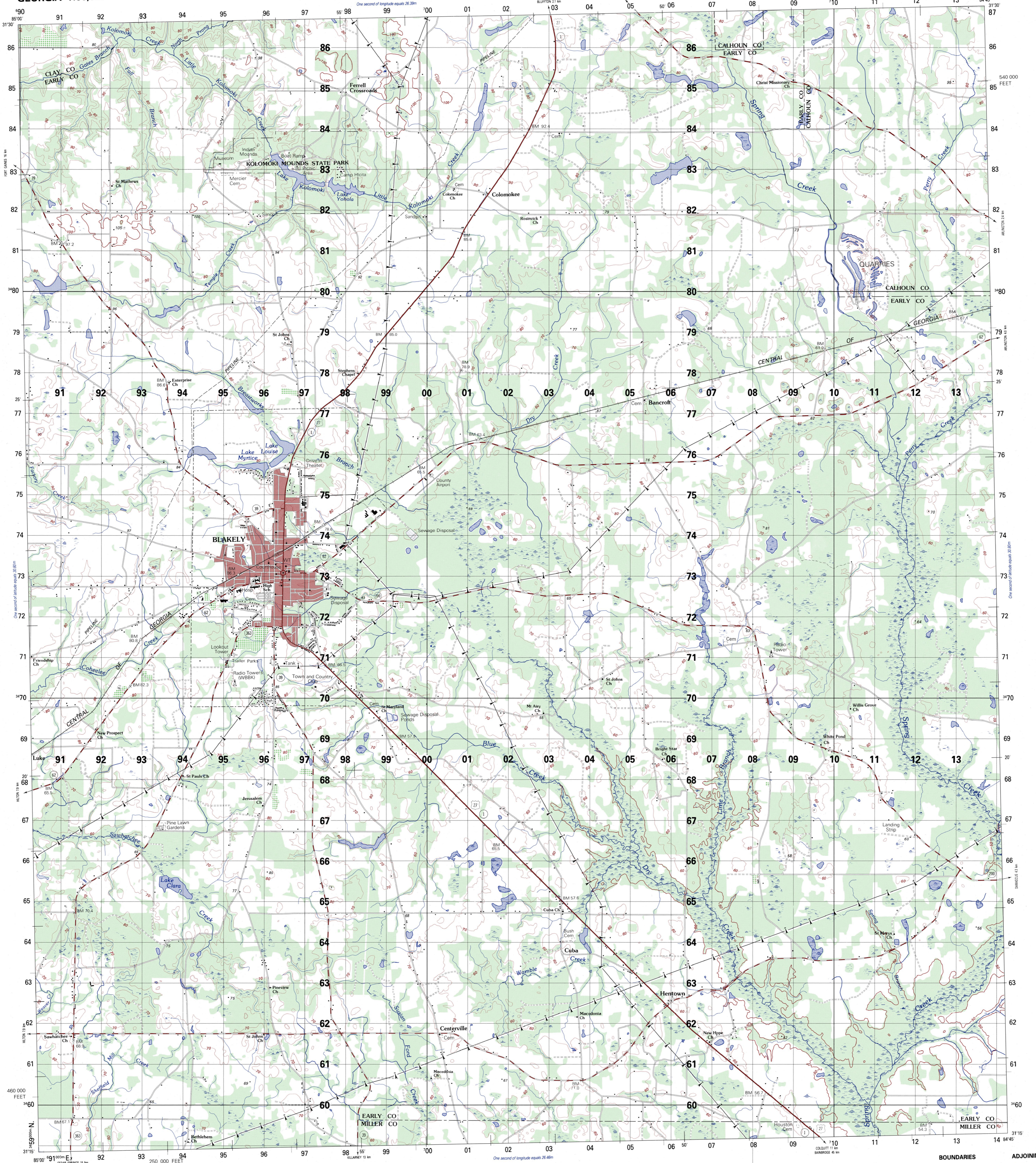


GEORGIA 1:50,000

BLAKELY



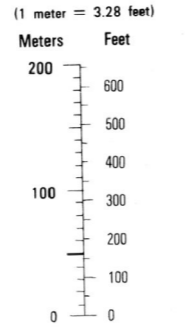
Prepared by the U.S. Geological Survey for publication by the Defense Mapping Agency Hydrographic Topographic Center, Washington, D.C. MAP INFORMATION AS OF 1983

LEGEND

CAUTION: ALL TELEPHONE AND ELECTRIC SERVICE LINES ARE NOT SHOWN. A LANE ON THIS MAP IS CONSIDERED TO BE 2.5 METERS WIDE. IN DEVELOPED AREAS ONLY THROUGH ROADS ARE CLASSIFIED. THERE MAY BE PRIVATE ENCLOSURES WITHIN THE BOUNDARIES OF THE NATIONAL OR STATE RESERVATIONS SHOWN ON THIS MAP.

Legend table with symbols for roads, railroads, boundaries, and other features. Includes categories like 'ROADS', 'RAILROADS', 'BOUNDARIES', 'Water', 'Vegetation', and 'Other'.

CONVERSION GRAPH



ELEVATIONS IN METERS

CONTOUR INTERVAL 10 METERS

SPHEROID: CLARKE 1866. GRID: 1000-METER UTM ZONE 16 (BLACK NUMBERED LINES). PROJECTION: TRANSVERSE MERCATOR. VERTICAL DATUM: NATIONAL GEODETIC VERTICAL DATUM OF 1929. HORIZONTAL DATUM: 1927 NORTH AMERICAN DATUM. CONTROL BY: U.S. GEOLOGICAL SURVEY. PREPARED BY: DIMATIC 9-83. PUBLISHED BY: Reprinted by NSA: 06-05.

FOR SALE BY U.S. GEOLOGICAL SURVEY, RESTON, VIRGINIA 22092

Table for 100 METER REFERENCE and 100,000 M SQUARE IDENTIFICATION. Includes grid coordinates and identification numbers.

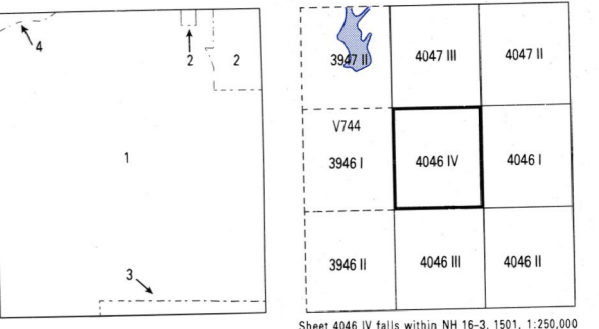
USERS SHOULD REFER TO CORRECTIONS, ADDITIONS, AND COMMENTS TO THE NSA OPERATIONAL HELP DESK: 1-800-455-0899; COMMERCIAL 314-263-4884; OR WRITE TO: DIRECTOR, NATIONAL GEOSPATIAL INTELLIGENCE AGENCY, ATTN: ISS, MAIL STOP 1-06, 4800 SANGAMORE ROAD, BETHESDA, MD 20816-5003.

THIS MAP IS RED-LIGHT READABLE

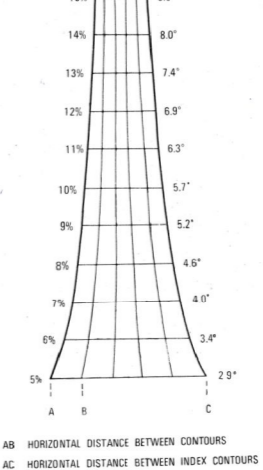
BOUNDARIES

- 1. Early County
2. Calhoun County
3. Miller County
4. Clay County

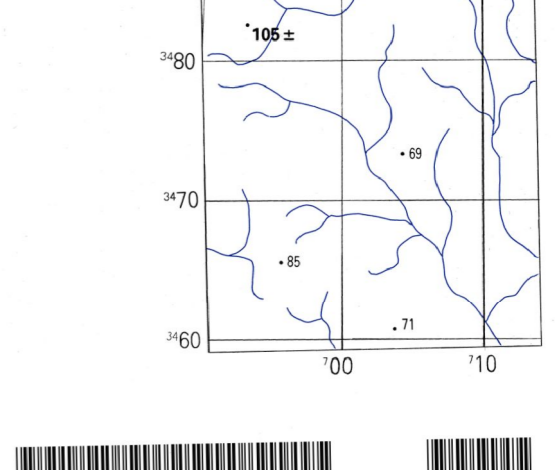
ADJOINING SHEETS



SLOPE GUIDE



ELEVATION GUIDE



NSN 7643014053059 NGA Ref No V745X40464