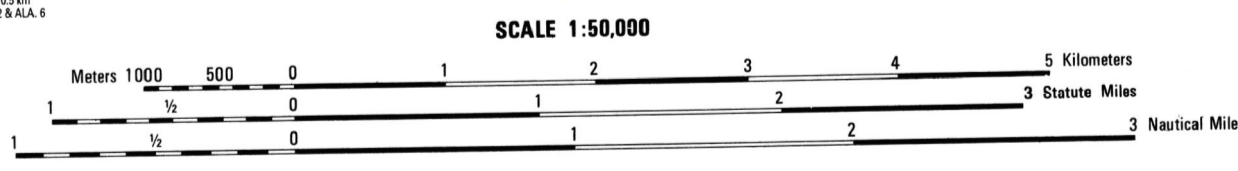


Prepared by the U.S. Geological Survey for publication by the Defense Mapping Agency Hydrographic/Topographic Center, Washington, D.C.
MAP INFORMATION AS OF 1985.



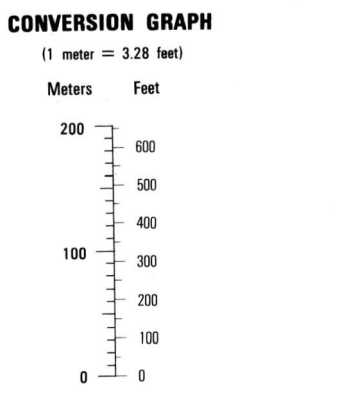
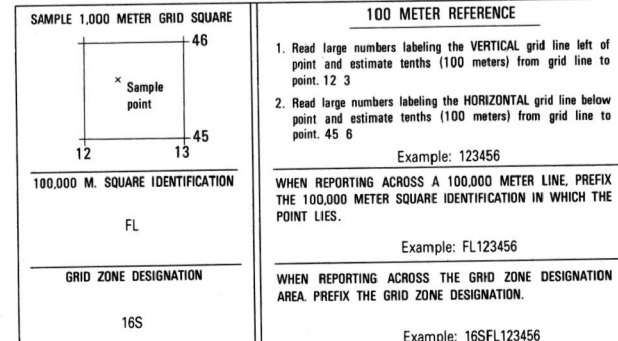
SCALE 1:50,000

ELEVATIONS IN METERS

CONTOUR INTERVAL 10 METERS

ELLIPSOID: 1,000 METER UTM ZONE 18 (BLACK NUMBERED LINES)
GRID: 10,000 FOOT STATE GRID TICS, ALABAMA (EAST ZONE)
PROJECTION: TRANSVERSE MERCATOR
VERTICAL DATUM: 1927 NORTH AMERICAN DATUM
CONTROL BY: U.S. GEOLOGICAL SURVEY
PREPARED BY: U.S. GEOLOGICAL SURVEY

FOR SALE BY U.S. GEOLOGICAL SURVEY
DENVER, COLORADO 80225, OR RESTON, VIRGINIA 22082



- LEGEND**
- CAUTION: ALL TELEPHONE AND ELECTRIC SERVICE LINES ARE NOT SHOWN.
A LANE ON THIS MAP IS CONSIDERED TO BE 25 METERS WIDE.
IN DEVELOPED AREAS ONLY THROUGH ROADS ARE CLASSIFIED.
THERE MAY BE PRIVATE INCLUSIONS WITHIN THE BOUNDARIES OF THE NATIONAL OR STATE RESERVATIONS SHOWN ON THIS MAP.
- ROADS: Divided highway with median strip, Primary, all weather, hard surface, Secondary, all weather, hard or improved surface, Fair or dry weather, unimproved surface, Trail
 - RAILROADS: Standard gauge 1.44m - 4'8 1/2", Single track, Multiple track, Nonoperating
 - Railroad station: Location known, Location unknown
 - Canal
 - Railroad bridge
 - Tunnel: Highway, Railroad
 - BOUNDARIES: National, with monument, State, territory, County, parish, Civil township, town, Incorporated city, village, town, Reservation: National, State, Military
 - Power transmission line
 - Buildings
 - Structures
 - Church, School
 - Power substation
 - Windmill, Watermill
 - Well, Tank
 - Mine shaft
 - Open pit mine or quarry
 - Horizontal control station
 - Bench mark, monument
 - Bench mark, non-monumented
 - Spot elevations in meters
 - Levee, dikes, dikes
 - Bluffs, cliffs
 - Woodland
 - Scattered trees: Scrub
 - Vineyard, Orchard, plantation
 - Intermittent lake, Dam, Earthen, Masonry
 - Stream, Perennial, intermittent
 - Marsh, swamp
 - Small falls, Large falls
 - Small rapids, Large rapids

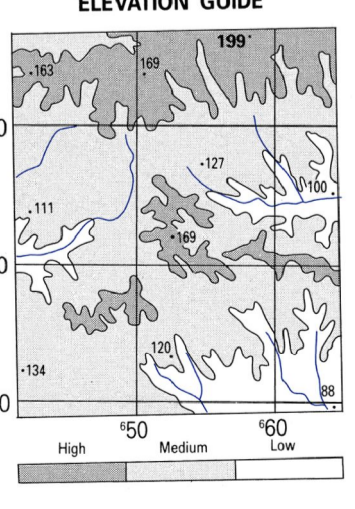
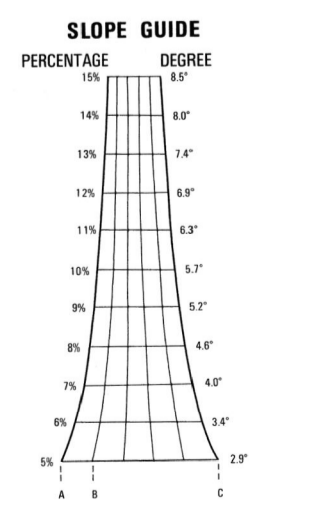
BOUNDARIES

Lee County
Macon County
Russell County

ADJOINING SHEETS

3948 II	3949 III	3949 II
3948 I	3948 IV	3948 I
3948 II	3948 III	3948 II

THIS MAP IS RED-LIGHT READABLE



GRID CONVERGENCE
9° 52' 19.5" MILS FOR CENTER OF SHEET

TO CONVERT A MAGNETIC AZIMUTH TO A GRID AZIMUTH
SUBTRACT G.M. ANGLE

TO CONVERT A GRID AZIMUTH TO A MAGNETIC AZIMUTH
ADD G.M. ANGLE

USGS 32085-C3-TM-050
NSN 7643014019319
NINA Ref No. V744X39484
ED. NO. 001