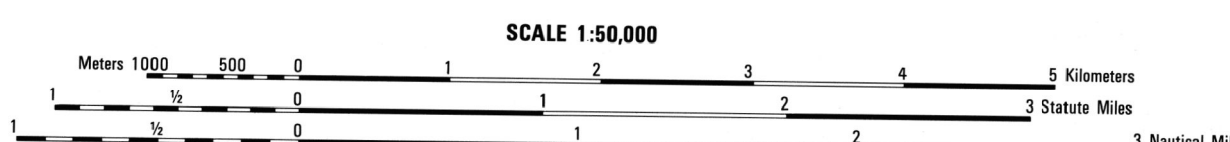


Prepared and published by the Defense Mapping Agency
Aerospace Center, St. Louis, Missouri
MAP INFORMATION AS OF 1985.

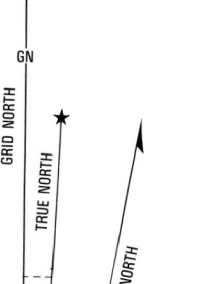
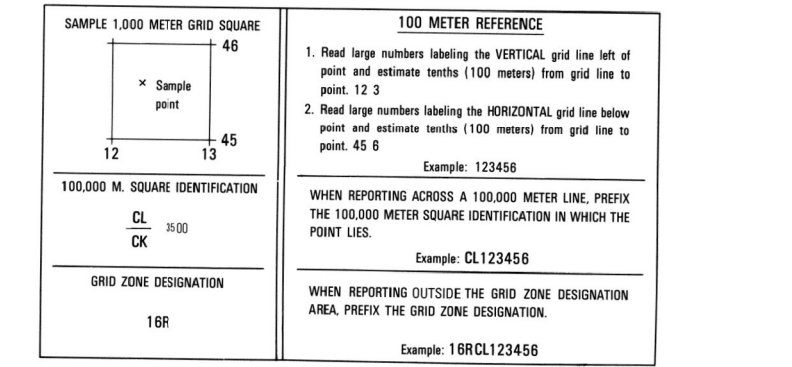


ELEVATIONS IN METERS

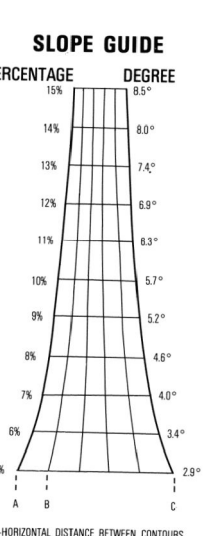
CONTOUR INTERVAL 10 METERS
SUPPLEMENTARY CONTOURS 5 METERS

SPHEROID: CLARKE 1866
GRID: 1000-METER UTM ZONE 18 (BLACK NUMBERED LINES)
18,000-FOOT STATE GRID TICKS, ALABAMA (WEST) ZONE
PROJECTION: TRANSVERSE MERCATOR
VERTICAL DATUM: NATIONAL GEODETIC VERTICAL DATUM OF 1929
HORIZONTAL DATUM: 1927 NORTH AMERICAN DATUM
CONTROL BY: DMAAC
PREPARED BY: DMAAC
PUBLISHED BY: DMAAC 8-87
Approved by MMA 1-01

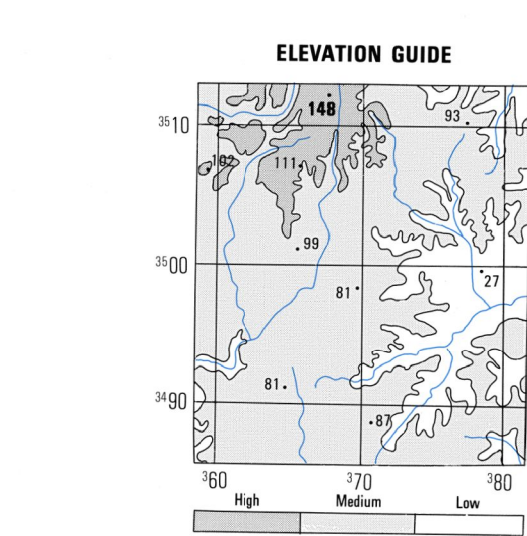
FOR SALE BY U.S. GEOLOGICAL SURVEY, RESTON, VIRGINIA 22092



TO CONVERT A GRID AZIMUTH TO A MAGNETIC AZIMUTH
SUBTRACT G M ANGLE



BOUNDARIES and ADJOINING SHEETS table. It lists the sheet number (3347 III) and its neighbors (3347 I, 3347 II, 3347 IV, 3348 I, 3348 II, 3348 III, 3348 IV).



- ROADS: Divided highway with median strip, Primary, all weather, hard surface, Secondary, all weather, hard surface, Light duty, all weather, hard or improved surface, Fair or dry weather, unimproved surface, Trail, Route markers: Interstate, Federal, State, Bridge: With superstructure, Without superstructure, RAILROADS (Standard gauge 1.44m - 4'8 1/2"), Multiple track, Nonstop, Railroad station: Location known, Location unknown, Car line, Incorporated city, village, town, Reservation: National, State, Military
- Power transmission line, Buildings, Structures, Church, School, Power substation, Windmill, Watermill, Well, Tank, Mine shaft, Open pit mine or quarry, Horizontal control station, Bench mark, monument, Bench mark, non-monumented, Spot elevations in meters, Level, high, clear, Shifts, cliffs, Woodland, Scattered trees, Scrub, Vineyard, Orchard, plantation, Intermittent lake, Dam, Earthen, Masonry, Stream: Perennial, Intermittent, Marsh, swamp, Small rapids, Small falls, Large rapids, Large falls