

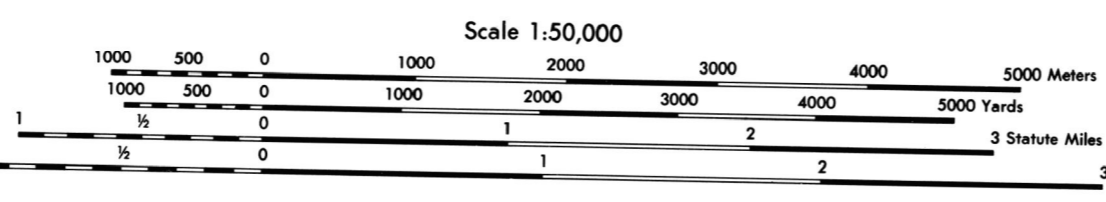
Prepared and published by the Defense Mapping Agency
Topographic Center, Washington, D. C.

MAP INFORMATION AS OF 1976

ON THIS MAP, A LANE IS GENERALLY CONSIDERED AS BEING A MINIMUM OF 2.5 METERS (8 FEET) IN WIDTH

LEGEND

- ROADS**
- Divided highway with median strip
- Primary, all weather, hard surface
- Secondary, all weather, hard surface
- Light duty, all weather, hard or improved surface
- Fair or dry weather, unimproved surface
- Trail
- Route markers: Interstate, Federal, State
- Roads: With superstructure, Without superstructure
- RAILROADS (Standard gauge 1.44m - 4'8 1/2")
- Single track
- Multiple track
- Nonoperating
- Railroad station, Location known, Location unknown
- Car line
- Railroad bridge: With superstructure, Without superstructure
- Tunnel: Highway, Railroad
- SOUNDINGS**
- National, with monument
- State, territory
- County, parish
- Civil township, town
- Incorporated city, village, town
- Reservation: National, state, Military
- ML RES**
- Power transmission line
- Buildings
- Church, School
- Power substation
- Windmill, Watermill
- Well, Tank
- Mine shaft
- Open pit mine or quarry
- Horizontal control station
- Bench mark, monument
- Bench mark, non-monumented
- Spot elevations in meters: Checked, Unchecked
- Leaves, rims, dikes
- Bluffs, cliffs
- Woodland
- Scattered trees, Scrub
- Vineyard, Orchard, plantation
- Intermittent lake, Dam, Earthen, Masonry
- Stream, Perennial, Intermittent
- Marsh, swamp
- Small rapids, Small falls
- Large rapids, Large falls



CONTOUR INTERVAL 10 METERS

SPHEROID CLARKE 1866
GRID 1000 METER UTM ZONE 18
PROJECTION TRANSVERSE MERCATOR
VERTICAL DATUM NATIONAL GEODESIC VERTICAL DATUM OF 1929
HORIZONTAL DATUM 1973 NORTH AMERICAN DATUM
CONTROL BY USGS, USCGS, AND USCE
Reprinted by NIMA 01-69

100 METER REFERENCE

1. Read large numbers labeling the VERTICAL grid line (at point and estimate tenths (100 meters) from profile to point. 12.3

2. Read large numbers labeling the HORIZONTAL grid line below point and estimate tenths (100 meters) from grid line to point. 45.0

Example: 123456

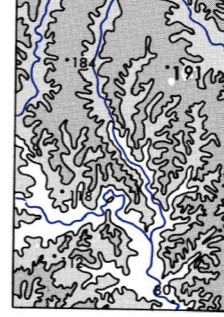
WHEN REPORTING OUTSIDE THE 100,000 METER SQUARE AREA IN WHICH THE POINT LIES, PREFIX THE 100,000 METER SQUARE IDENTIFICATION.

Example: CL123456

WHEN REPORTING OUTSIDE THE GRID ZONE DESIGNATION AREA IN WHICH THE POINT LIES, PREFIX THE GRID ZONE DESIGNATION.

Example: 16SCL123456

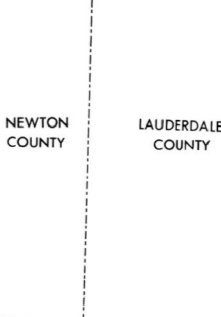
ELEVATION GUIDE



ADJOINING SHEETS

3149 II	3249 III	3249 II
3148 I	3248 IV	3248 I
3148 II	3248 III	3248 II

BOUNDARIES



GRID CONVERGENCE
1°00' (18 MILS)
FOR CENTER OF SHEET

GRID NORTH
MAGNETIC NORTH
1975
G.M. ANGLE
41° (70 MILS)

TO CONVERT A MAGNETIC AZIMUTH TO A GRID AZIMUTH
ADD G.M. ANGLE

TO CONVERT A GRID AZIMUTH TO A MAGNETIC AZIMUTH
SUBTRACT G.M. ANGLE

USERS SHOULD REFER TO CORRECTIONS, ADDITIONS AND COMMENTS TO THE NIMA CUSTOMER HELP BOOK, 1-800-450-0889 COMMERCIAL, 1-314-260-1226 DEN 4500-1226, OR WRITE TO ATTN: CDD MAIL STOP P-37 NATIONAL MAPPING AND MAPPING AGENCY 4600 SANGAREE ROAD BETHESDA MD 20816-0003

THIS MAP IS RED-LIGHT READABLE

NSN 7643014043714 ED. NO. 001
NRA Ref No. V743X32484