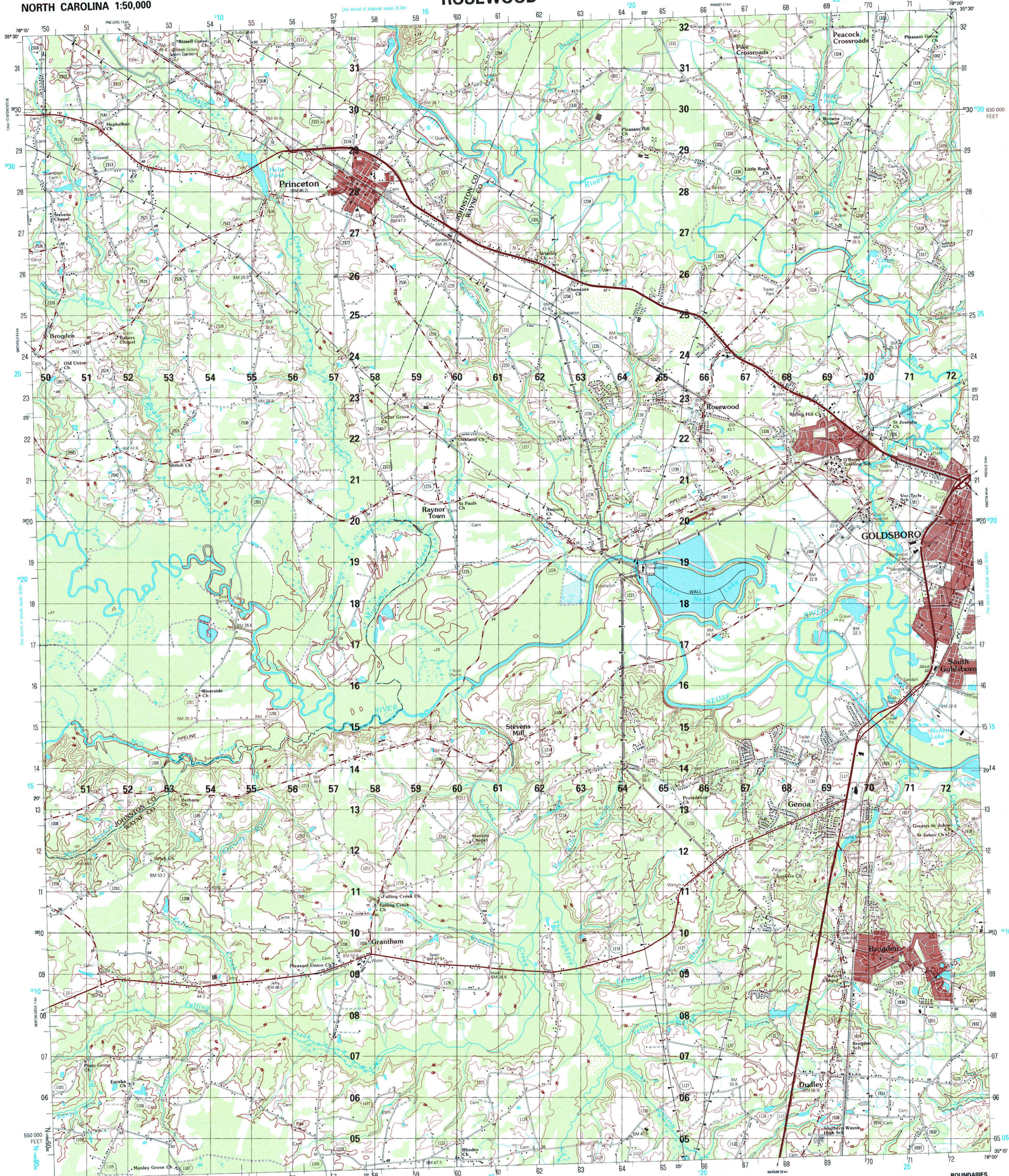


ROSEWOOD

NORTH CAROLINA 1:50,000

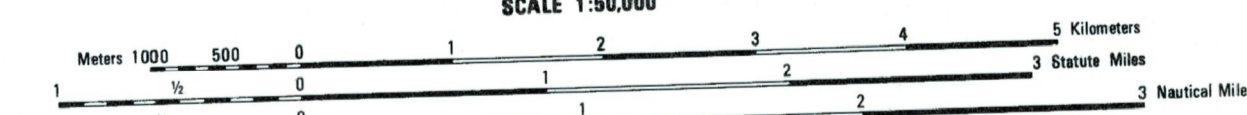
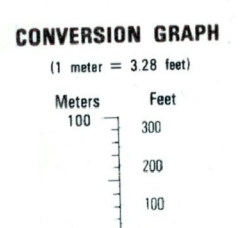


Prepared by the U.S. Geological Survey for publication by the Defense Mapping Agency Hydrographic/Topographic Center, Washington, D.C.
 MAP INFORMATION AS OF 1983.

LEGEND

CAUTION: ALL TELEPHONE AND ELECTRIC LINES ARE NOT SHOWN. A LANE ON THIS MAP IS CONSIDERED TO BE 2.5 METERS WIDE. IN DEVELOPED AREAS ONLY THROUGH ROADS ARE CLASSIFIED. THERE MAY BE PRIVATE INHOLDINGS WITHIN THE BOUNDARIES OF THE NATIONAL OR STATE RESERVATIONS SHOWN ON THIS MAP. SHORT DASHED BLUE LINES INDICATE ELLIPTICAL BAY OUTLINES VISIBLE ON AERIAL PHOTOGRAPHS.

- ROADS**
- Divided highway with median strip
- Primary, all weather, hard surface
- Secondary, all weather, hard surface
- Light duty, all weather, hard or improved surface
- Fair or dry weather, unimproved surface
- Trail
- Route markers: Interstate, Federal, State
- Bridge
- RAILROADS** (Standard gauge 1.44m - 4'8 1/2")
- Single track
- Multiple track
- Nonoperating
- Railroad station: Location known; Location unknown
- Car line
- Railroad bridge
- Tunnel: Highway, Railroad
- BOUNDARIES**
- National, with monument
- State, territory
- County, parish
- Civil township, town
- Incorporated city, village, town
- Reservation: National, State, Military
- Water**
- Power transmission line
- Building
- Sanctuary
- Church, School
- Power substation
- Windmill, Watermill
- Well, Tank
- Mine shaft
- Open pit mine or quarry
- Horizontal control station
- Beach mark, monument
- Spot elevations in meters
- Leaves, rims, dikes
- Bluffs, cliffs
- Woodland
- Scattered trees: Scrub
- Viewed: Orchard, plantation
- Interruption lake, Dam, Earth: Masonry
- Stream, Perennial, Intermittent
- Marsh, swamp
- Small falls, Large falls
- Small rapids, Large rapids



ELEVATIONS IN METERS

CONTOUR INTERVAL 5 METERS

ELLIPSOID: CLARKE 1866
 GRID: 1,000 METER UTM ZONE 17 (BLACK NUMBERED LINES)
 1,000 METER UTM ZONE 18 (BLUE NUMBERED TICKS)
 10,000 FOOT STATE GRID TICS, NORTH CAROLINA TRANSVERSE MERCATOR
 PROJECTION: NATIONAL GEODETIC VERTICAL DATUM OF 1929
 VERTICAL DATUM: 1929 NORTH AMERICAN DATUM
 HORIZONTAL DATUM: U.S.G.S. NAD83 AND NORTH CAROLINA GEODETIC SURVEY
 CONTROL BY: U.S.G.S. NAD83 AND NORTH CAROLINA GEODETIC SURVEY
 PREPARED BY: U.S. GEOLOGICAL SURVEY

Reprinted by NIMA 10-00
 FOR SALE BY U.S. GEOLOGICAL SURVEY
 DENVER, COLORADO 80225, OR RESTON, VIRGINIA 22092

100 METER REFERENCE

1. Read large numbers labeling the VERTICAL grid line left of point and estimate tenths (100 meters) from grid line to point 12.3

2. Read large numbers labeling the HORIZONTAL grid line below point and estimate tenths (100 meters) from grid line to point 43.9

Example: 1235.6

WHEN REPORTING ACROSS A 100,000 METER LINE, PREFIX THE 100,000 METER SQUARE IDENTIFICATION IN WHICH THE POINT LIES.

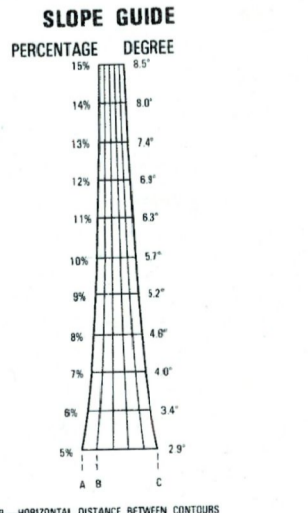
Example: 0K123456

100,000 M. SQUARE IDENTIFICATION

GRID ZONE DESIGNATION: 17S

WHEN REPORTING ACROSS THE GRID ZONE DESIGNATION AREA, PREFIX THE GRID ZONE DESIGNATION.

Example: 17S0K123456



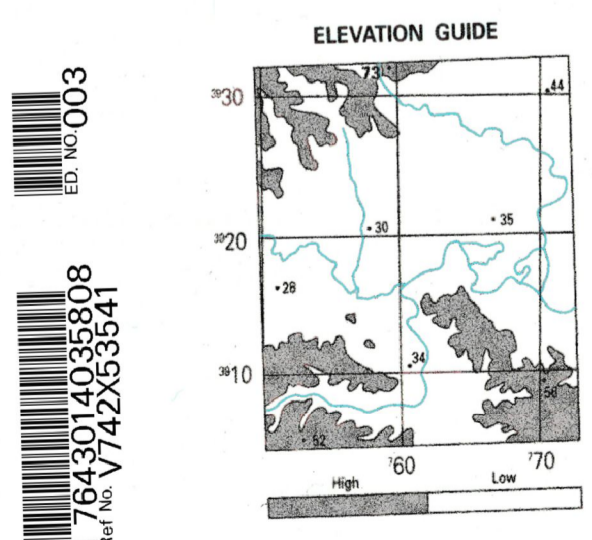
BOUNDARIES

Johnston County
Wayne County

ADJOINING SHEETS

5356 II	5355 II	5455 II
5354 IV	5354 I	5454 IV
5354 II	5354 III	5454 II

Sheet 5354 I falls within N 17S 1701, 1702, 008



THIS MAP IS RED-LIGHT READABLE
 USGS 35078-C1-TM-050