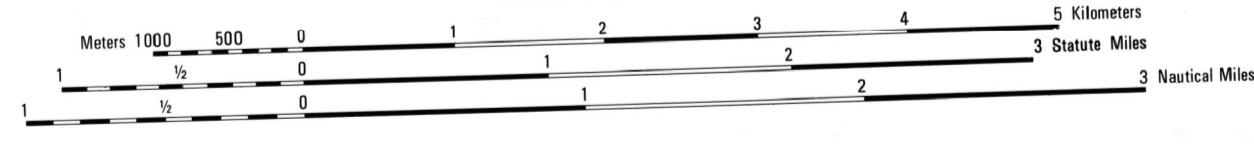


ACME

NORTH CAROLINA 1:50,000

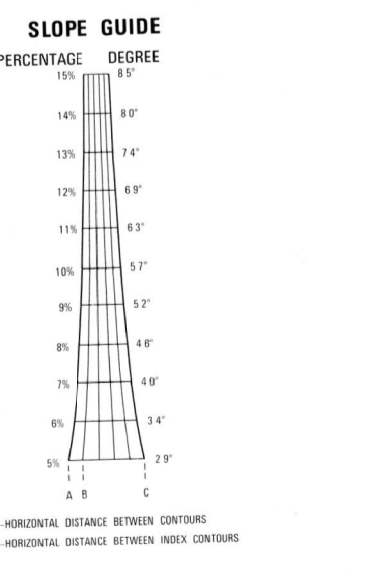
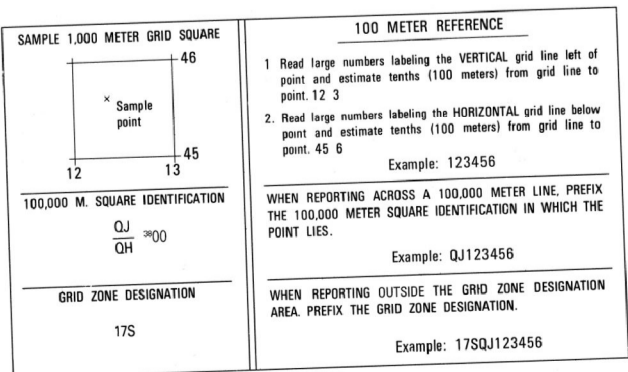


Prepared by the U.S. Geological Survey for publication by the Defense Mapping Agency
MAP INFORMATION AS OF 1983.



ELEVATIONS IN METERS
CONTOUR INTERVAL 5 METERS

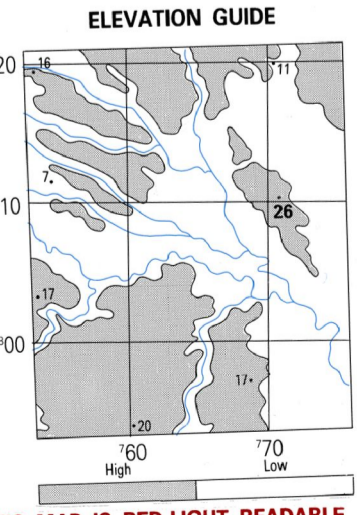
SPHEROID: CLARKE 1866
GRID: 1000-METER UTM ZONE 17 (BLACK NUMBERED LINES)
1000-METER UTM ZONE 18 (BLUE NUMBERED TICKS)
1000-FOOT STATE GRID TICKS NORTH CAROLINA
TRANSVERSE MERCATOR
PROJECTION: NATIONAL GEODETIC DATUM OF 1983
VERTICAL DATUM: NATIONAL GEODETIC DATUM OF 1983
HORIZONTAL DATUM: 1927 NORTH AMERICAN DATUM
CONTROL BY: USGS, NOS, NOAA, AND OTHER AGENCIES
PREPARED BY: U.S. GEOLOGICAL SURVEY
PUBLISHED BY: DMA 7-85
Reprinted by NGA 07-08
FOR SALE BY U.S. GEOLOGICAL SURVEY, RESTON, VIRGINIA 22092



BOUNDARIES and ADJOINING SHEETS

1	2	3	4
5	6	7	8
9	10	11	12

1. Pender County
2. Brunswick County
3. Columbus County
4. Bladen County
5. New Hanover County



LEGEND

CAUTION: ALL TELEPHONE AND ELECTRIC SERVICE LINES ARE NOT SHOWN.
A LANE ON THIS MAP IS CONSIDERED TO BE 25 METERS WIDE.
IN DEVELOPED AREAS ONLY THROUGH ROADS ARE CLASSIFIED.
THERE MAY BE PRIVATE INHOLDINGS WITHIN THE BOUNDARIES OF THE NATIONAL OR STATE RESERVATIONS SHOWN ON THIS MAP.

ROADS: Divided highway with median strip, Primary, all weather, hard surface, Secondary, all weather, hard surface, Light duty, all weather, hard or improved surface, Fair or dry weather, unimproved surface, Trail, Route markers: Interstate, Federal, State, Railroad bridge, Railroads (Standard gauge 1.44m - 4'8 1/2"), Single track, Multiple track, Nonoperating, Railroad station: Location known, Location unknown, Car line, Trolley, Trolley, Railroad, Trench, Highway, Railroad, BOUNDARIES: National, with monument, State, territory, County, parish, Civil township, town, Incorporated, National, State, Military

Buildings, Structures, Church, School, Power substation, Windmill, Watermill, Well, Tank, Mine shaft, Open pit mine or quarry, Horizontal control station, Bench mark, monumented, Bench mark, non-monumented, Spot elevations in meters, Eaves, sills, eaves, Bluffs, Woodland, Scattered trees: Scrub, Vineyard, Orchard, plantation, Interment site: Date: Earthen, Masonry, System: Perennial, Intermittent, Marsh, swamp, Small falls, Large falls, Small rapids, Large rapids