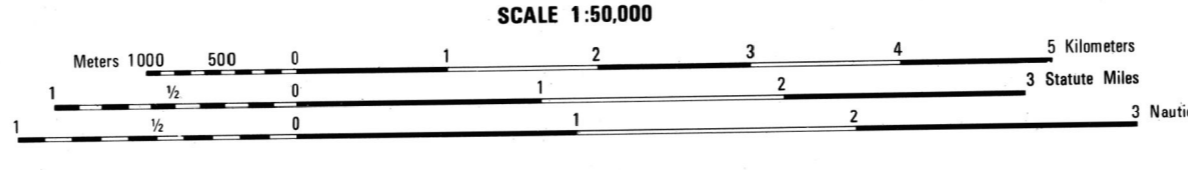


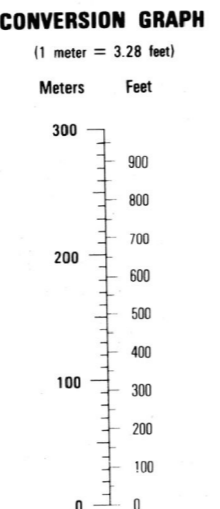
Prepared by the U.S. Geological Survey for publication by the Defense Mapping Agency  
MAP INFORMATION AS OF 1983.

CAUTION: ALL TELEPHONE AND ELECTRIC SERVICE LINES ARE NOT SHOWN.  
A LINE ON THIS MAP IS CONSIDERED TO BE 25 METERS WIDE.  
IN DEVELOPED AREAS ONLY THROUGH ROADS ARE CLASSIFIED.  
THERE MAY BE PRIVATE INHOLDINGS WITHIN THE BOUNDARIES OF THE NATIONAL OR STATE RESERVATIONS SHOWN ON THIS MAP.

- ROADS: Divided highway with median strip, Primary, all weather, hard surface, Secondary, all weather, hard surface, Light duty, all weather, hard or improved surface, Fair or dry weather, unimproved surface, Trail, Route markers: Interstate, Federal, State, Bridge, RAILROADS: Standard gauge (1.44m - 4'8 1/2"), Single track, Multiple track, Nonoperating, Railroad station: Location known, Location unknown, Car line, Railroad bridge, Tunnel: Highway, Railroad, BOUNDARIES: National, with monument, County, parish, Civil township, town, Incorporated city, village, town, Reservation: National, State, Military
- Power transmission line, Buildings, Structures, Church: School, Power station, Windmill: Watermill, Well: Tank, Mine shaft, Open pit mine or quarry, Horizontal control station, Bench mark: monumented, Bench mark: non-monumented, Spot elevations in meters, Leaves, rims, dikes, Bluffs, cliffs, Woodland, Scattered trees: Scrub, Vineyard: Orchard, plantation, Intermittent lake: Dam: Earthen, Masonry, Stream: Perennial: Intermittent, Marsh, swamp, Small falls: Large falls, Small rapids: Large rapids



ELEVATIONS IN METERS  
CONTOUR INTERVAL 10 METERS

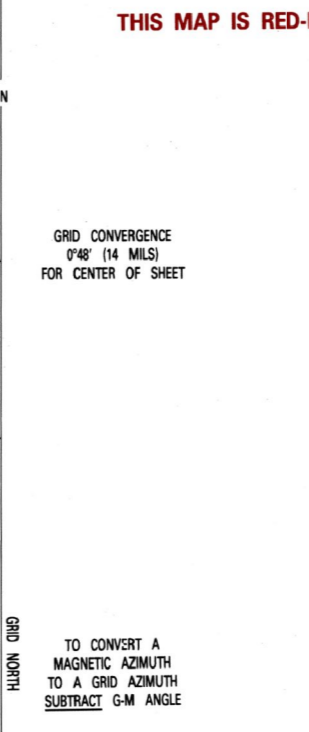


SPHEROID: CLARKE 1866  
GRID: 1,000-METER UTM ZONE 17 (BLACK NUMBERED LINES)  
PROJECTION: TRANSVERSE MERCATOR  
VERTICAL DATUM: NATIONAL GEODESIC VERTICAL DATUM OF 1929  
HORIZONTAL DATUM: 1983 NORTH AMERICAN DATUM  
CONTROL BY: USGS, NATIONAL USGS AND NCSS  
PREPARED BY: U.S. GEOLOGICAL SURVEY  
Distributed by: DMA 5-75

FOR SALE BY U.S. GEOLOGICAL SURVEY  
DENVER, COLORADO 80225, OR RESTON, VIRGINIA 22092

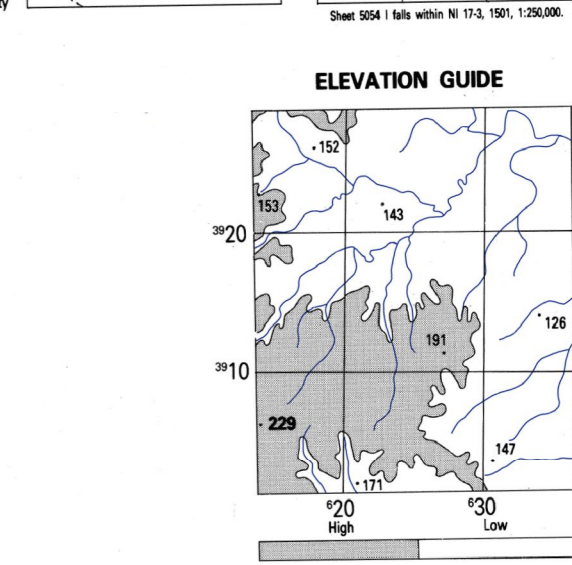
100 METER REFERENCE table with columns for grid zone designation and spot elevation.

USERS SHOULD REFER TO THE NATIONAL OPERATIONAL HELP DESK: 1-800-456-6969 COMMERCIAL 314-266-4864 OR WRITE TO DIRECTOR, NATIONAL MAPS AND MAPPIING AGENCY, ATTN: 15, MAIL STOP 16, 4800 SANGAMORE ROAD, BETHESDA, MD 20814-0002



THIS MAP IS RED-LIGHT READABLE

BOUNDARIES and ADJOINING SHEETS table showing sheet numbers and county names.



NSN 7643014043610  
NIMA Ref No: V742X50541