

Prepared by the U.S. Geological Survey for publication by the Defense Mapping Agency Hydrographic/Topographic Center, Washington, D.C.

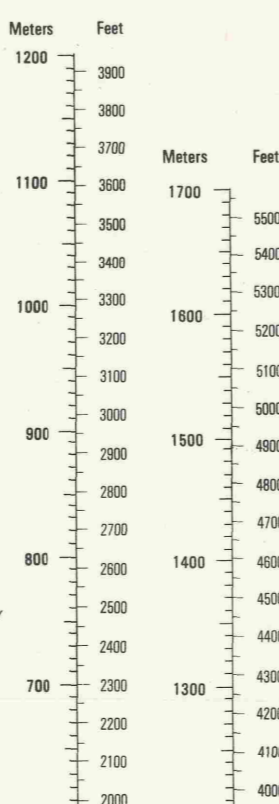
MAP INFORMATION AS OF 1987-88.

LEGEND

CAUTION: ALL TELEPHONE AND ELECTRIC SERVICE LINES ARE NOT SHOWN. A LANE ON THIS MAP IS CONSIDERED TO BE 2.5 METERS WIDE. IN DEVELOPED AREAS ONLY THROUGH ROADS ARE CLASSIFIED. THERE MAY BE PRIVATE INHOLDINGS WITHIN THE BOUNDARIES OF THE NATIONAL OR STATE RESERVATIONS SHOWN ON THIS MAP.

- Divided highway with median strip
- Primary, all weather, hard surface
- Secondary, all weather, hard surface
- Light duty, all weather, hard or improved surface
- Fair or dry weather, unimproved surface
- Route markers: Interstate, Federal, State
- Bridge
- RAILROADS (Standard gauge 1.44m - 4'8 1/2")
- Single track
- Multiple track
- Nonoperating
- Railroad station: Location known; Location unknown
- Car line
- Railroad bridge
- Tunnel: Highway; Railroad
- NATIONAL BOUNDARIES
- State, territory
- County, parish
- Civil township, town
- Incorporated city, village, town
- Reservation: National; State; Military
- Power transmission line
- Buildings
- Structures
- Church; School
- Power substation
- Well; Watermill
- Mine shaft
- Open pit mine or quarry
- Horizontal control station
- Bench mark, monument
- Bench mark, non-monumented
- Spot elevations in meters
- Levelling lines, dikes
- Bluffs, cliffs
- Woodland
- Scattered trees: Scrub
- Vineyard; Orchard; plantation
- Intermittent lake: Dam; Earthdam; Masonry
- Stream: Perennial; Intermittent
- Marsh; Swamp
- Small falls; Large falls
- Small rapids; Large rapids

CONVERSION GRAPH
(1 meter = 3.28 feet)

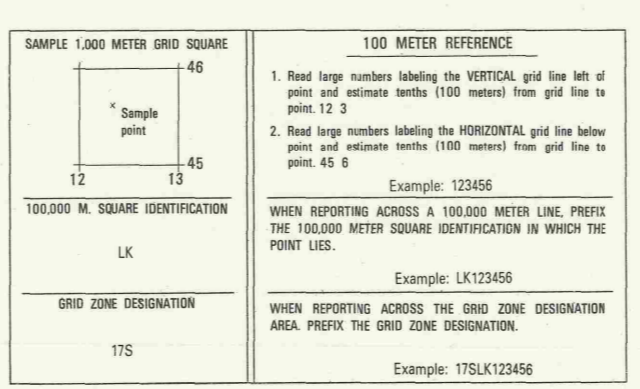


ELEVATIONS IN METERS

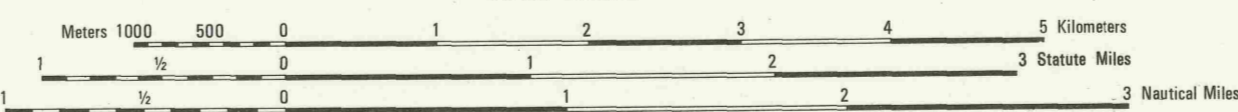
CONTOUR INTERVAL 40 METERS

ELLIPSOID: CLARKE 1866
GRID: 1,000-METER UTM ZONE 17 (BLACK NUMBERED LINES)
10,000-FOOT STATE GRID TICS, NORTH CAROLINA
PROJECTION: TRANSVERSE MERCATOR
VERTICAL DATUM: NATIONAL GEODETIC VERTICAL DATUM OF 1929
HORIZONTAL DATUM: 1927 NORTH AMERICAN DATUM
CONTROL BY: U.S. GEODOLCA AND TIA
PREPARED BY: U.S. GEOLOGICAL SURVEY
PUBLISHED BY: DMAHC, 11-900

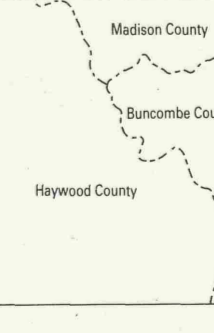
FOR SALE BY U.S. GEOLOGICAL SURVEY
DENVER, COLORADO 80225, OR RESTON, VIRGINIA 22092



USERS SHOULD REFER TO CORRECTIONS, ADDITIONS, AND COMMENTS FOR IMPROVING THIS PRODUCT TO: DIRECTOR, DEFENSE MAPPING AGENCY, ATTN: PR, 8813 LEE HIGHWAY, FAIRFAX, VA 22031-2137.



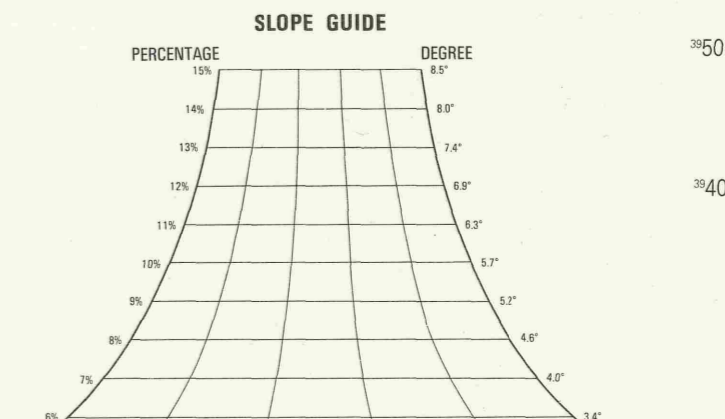
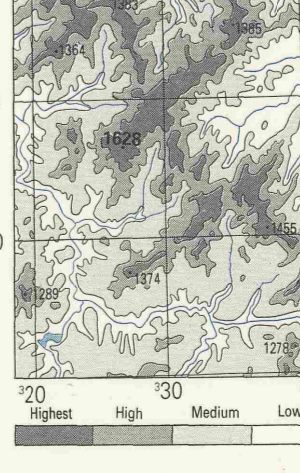
BOUNDARIES



ADJOINING SHEETS

4455 I	4455 IV	4455 I
4455 II	4455 II	4455 II
4454 I	4454 IV	4454 I

ELEVATION GUIDE



THIS MAP IS RED-LIGHT READABLE

USGS 35082-E7-TM-050
DMA STOCK NO. V742X4553