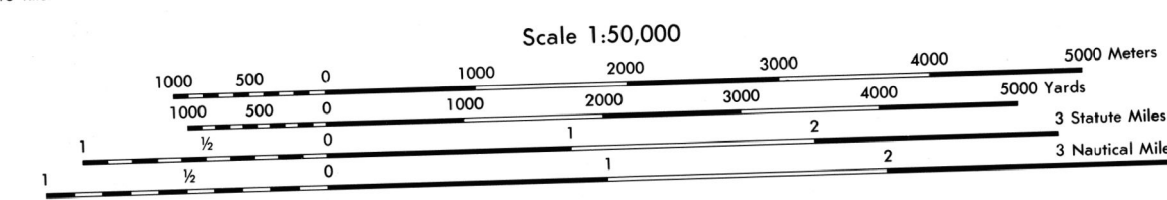
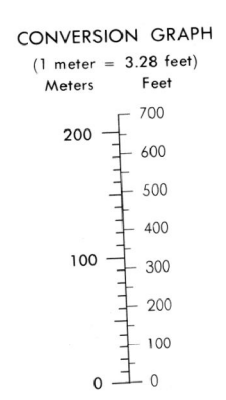
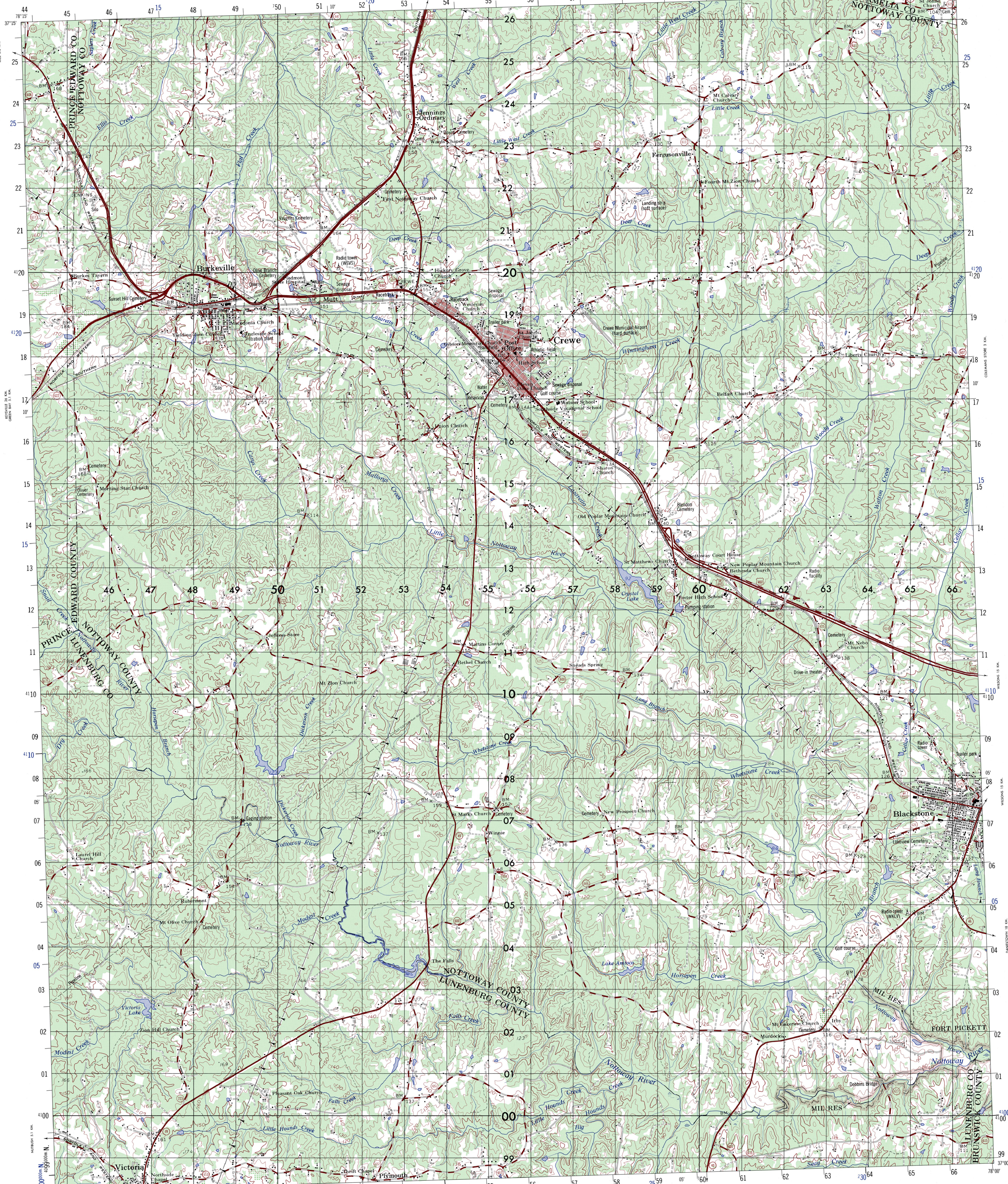


CREWE



ELEVATIONS IN METERS

CONTOUR INTERVAL 10 METERS



Prepared and published by the Defense Mapping Agency

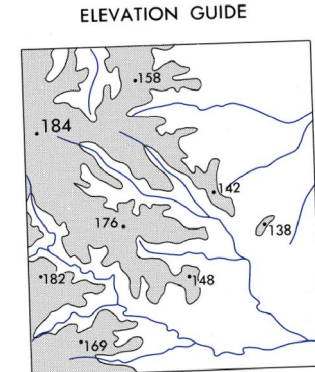
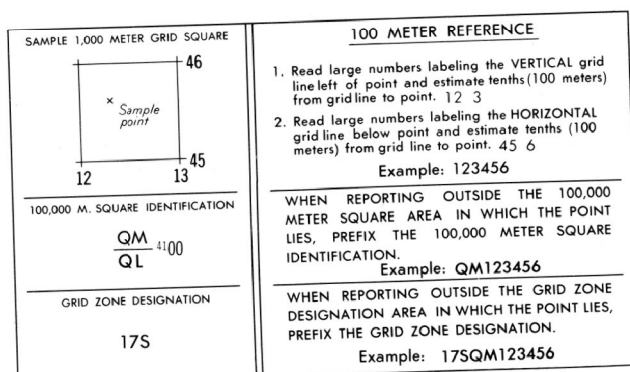
LEGEND
MAP INFORMATION AS OF 1976

ON THIS MAP, A LANE IS GENERALLY CONSIDERED AS BEING A MINIMUM OF 2.5 METERS (8 FEET) IN WIDTH.

- ROADS**
- Divided highway with median strip
- Primary, all weather, hard surface
- Secondary, all weather, hard surface
- Light duty, all weather, hard or improved surface
- Fair or dry weather, unimproved surface
- Trail
- Route markers: Interstate, Federal, State
- Railroad station, location known, location unknown
- RAILROADS** (Standard gauge 1.44m - 4 ft 7 1/2")
- Single track
- Multiple track
- Non-superstructure
- Railroad bridge, location known, location unknown
- Tunnel, Highway, Railroad
- BOUNDARIES**
- National, with monument
- State, territory
- County, parish
- Civil township, town
- Incorporated city, village, town
- Reservation: National, state, military
- MIL RES**
- Power transmission line
- Building
- Structure
- Church, School
- Power substation
- Windmill, Watermill
- Well, Tank
- Mine shaft
- Open pit mine or quarry
- Horizontal control station
- Bench mark, non-monumented
- Bench mark, non-monumented
- Spot elevations in meters: Checked, Unchecked
- Leaves, rims, dikes
- Bluffs, cliffs
- Woodland
- Scattered trees; Scrub
- Vineyard; Orchard; plantation
- Intermittent lake; Dam; Earthmound; Masonry
- Stream, Perennial; Intermittent
- Marsh, swamp
- Small rapids; Small falls
- Large rapids; Large falls

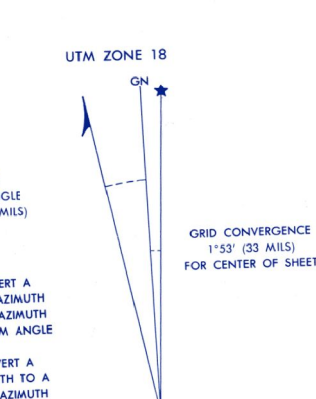
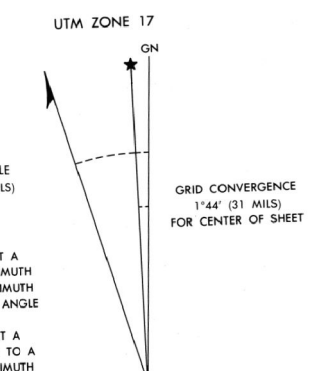
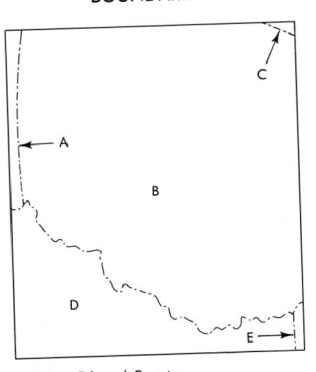
SPHEROID CLARKE 1866
GRIDS 1,000 METER UTM ZONE 17 (BLACK NUMBERED LINES)
PROJECTION TRANSVERSE MERCATOR
VERTICAL DATUM NATIONAL GEODETIC VERTICAL DATUM OF 1929
HORIZONTAL DATUM 1927 NORTH AMERICAN DATUM
CONTROL BY USGS, MONROE AND USGS
PRINTED BY DEFENSE MAPPING AGENCY
 Reprinted by NGA 05-08

FOR SALE BY U.S. GEOLOGICAL SURVEY, RESTON, VIRGINIA 22092



ADJOINING SHEETS

5358 IV	5358 I	5458 IV
5358 III	5358 II	5458 III
5357 IV	5357 I	5457 IV



THIS MAP IS RED-LIGHT READABLE
 USERS SHOULD REFER TO CORRECTIONS, ADDITIONS, AND COMMENTS TO THE NGA OPERATIONAL HELP DESK:
 1-800-455-8088 COMMERCIAL, 314-353-4844, 301-852-8868 OR WRITE TO DIRECTOR, NATIONAL GEOSPATIAL-
 INTELLIGENCE AGENCY, ATTN: ES, MAIL STOP 1-88, 4800 SANGAMORE ROAD, BETHESDA, MD 20815-5002.

NSN 7643014043543
 NIMA Ref No. V734X65582

ED. NO. 001