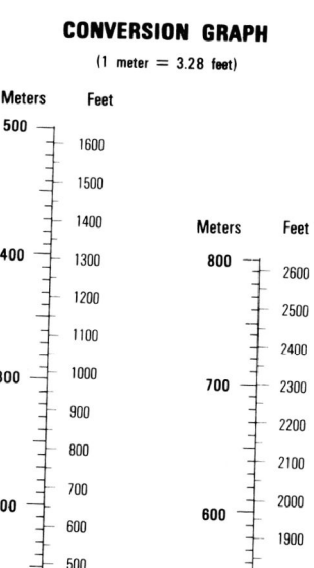


Prepared by the U.S. Geological Survey for publication by the Defense Mapping Agency

VEGETATION DATE 1986 OTHER INFORMATION 1973

LEGEND
CAUTION: ALL TELEPHONE AND ELECTRIC SERVICE LINES ARE NOT SHOWN.
A LANE ON THIS MAP IS CONSIDERED TO BE 25 METERS WIDE.
IN DEVELOPED AREAS ONLY THROUGH ROADS ARE CLASSIFIED.
THERE MAY BE PRIVATE HOLDINGS WITHIN THE BOUNDARIES OF THE NATIONAL OR STATE RESERVATIONS SHOWN ON THIS MAP.

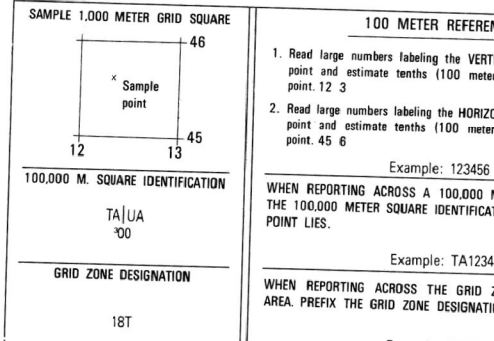
- ROADS
 - Divided highway with median strip
 - Primary, all weather, hard surface
 - Secondary, all weather, hard surface
 - Light duty, all weather, hard or improved surface
 - Far or dry weather, unimproved surface
 - Trail
 - Route markers: Interstate, Federal, State
 - Bridge
 - RAILROADS (Standard gauge 1.44m - 4'8 1/2")
 - Single track
 - Multiple track
 - Nonoperating
 - Railroad station: Location known; Location unknown
 - Can line
 - Railroad bridge
 - Tunnel: Highway; Railroad
- BOUNDARIES
 - National, with monument
 - State, territory
 - County, parish
 - Civil township, town
 - Incorporated city, village, town
 - Reservation: National; State; Military
- Power transmission line
- Building
- Structure
- Church, school
- Power substation
- Windmill; Watermill
- Well; Tank
- Mine shaft
- Open pit mine or quarry
- Metallurgical industrial plant
- Bench mark, non-measured
- Bench mark, non-measured
- Spot elevations in meters
- Leaves, rims, dikes
- Bluffs, cliffs
- Woodland
- Scattered trees; Scrub
- Vineyard; Orchard; plantation
- Intermittent lake; Dam; Earthen; Masonry
- Stream: Perennial; Intermittent
- Marsh, swamp
- Small falls; Large falls
- Small rapids; Large rapids



ELEVATIONS IN METERS
CONTOUR INTERVAL 20 METERS

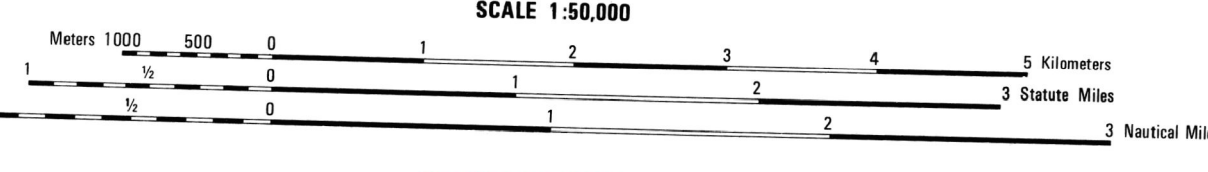
ELLIPSOID: CLARKE 1866
GRID: 1,000 METER UTM ZONE 18 (BLACK NUMBERED LINES)
PROJECTION: 180,000 FOOT STATE GRID TICS, PENNSYLVANIA (NORTH AND SOUTH ZONES)
VERTICAL DATUM: TRANSVERSE MERCATOR
HORIZONTAL DATUM: NATIONAL GEODETIC VERTICAL DATUM OF 1929
CONTROL: 1927 NORTH AMERICAN DATUM
PREPARED BY: U.S. GEOLOGICAL SURVEY

Reprinted by NIMA 02-01
FOR SALE BY U.S. GEOLOGICAL SURVEY
DENVER, COLORADO 80225, OR RESTON, VIRGINIA 22092



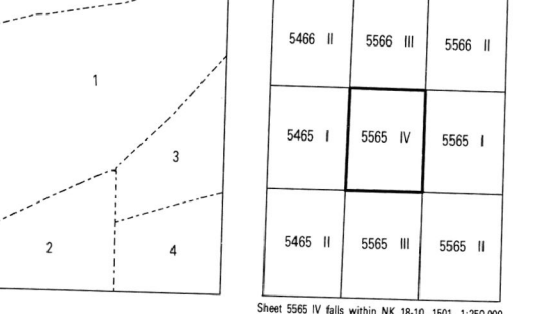
1. Read large numbers labeling the vertical grid line to the left of the point and estimate tenths (100 meters) from grid line to point of 45.8.
Example: 123456
WHEN REPORTING ACROSS A 100,000 METER LINE, PREFER THE 100,000 METER SQUARE IDENTIFICATION IN WHICH THE POINT LIES.
Example: 12A123456
WHEN REPORTING ACROSS THE GRID ZONE DESIGNATION AREA, PREFER THE GRID ZONE IDENTIFICATION.
Example: 18TA123456

USERS SHOULD REFER TO CORRECTIONS, ADDITIONS, AND COMMENTS TO THE NIMA CUSTOMER HELP DESK: 1-800-486-0989, COMMERCIAL: 1-314-250-1228, ISN 490-1228, OR WRITE TO: DIRECTOR, NATIONAL IMAGERY AND MAPPING AGENCY, ATTN: CO. 8B13, HIGHWAY, FAIRFAX, VA. 22031-2127



THIS MAP IS RED-LIGHT READABLE

BOUNDARIES



1. Centre County
2. Mifflin County
3. Union County
4. Snyder County
5. Clinton County

ADJOINING SHEETS

