

Prepared by the U.S. Geological Survey for publication by the Defense Mapping Agency Hydrographic/Topographic Center, Washington, D.C. VEGETATION DATE 1986-OTHER INFORMATION 1973.



LEGEND

CAUTION: ALL TELEPHONE AND ELECTRIC SERVICE LINES ARE NOT SHOWN. A LANE ON THIS MAP IS CONSIDERED TO BE 2.5 METERS WIDE.

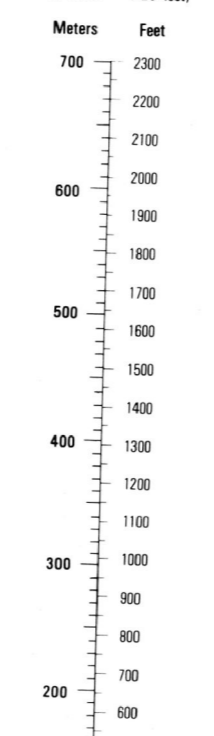
IN DEVELOPED AREAS ONLY THROUGH ROADS ARE CLASSIFIED.

THERE MAY BE PRIVATE INCLUSIONS WITHIN THE BOUNDARIES OF THE NATIONAL OR STATE RESERVATIONS SHOWN ON THIS MAP.

- Legend entries for roads, railroads, power lines, structures, and other features with corresponding symbols.

CONVERSION GRAPH

11 meters = 3.28 feet



ELEVATIONS IN METERS

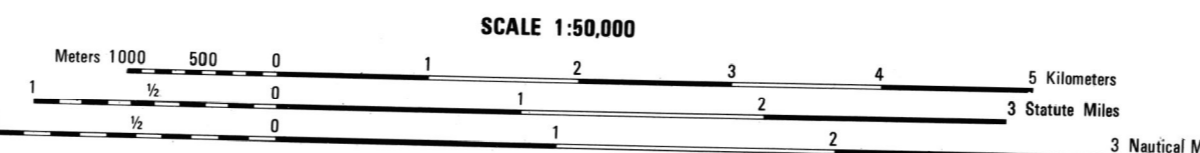
CONTOUR INTERVAL 20 METERS

ELIPSOID: 1000-METER UTM ZONE 18 (BLACK NUMBERED LINES) GRID: 1000 FOOT STATE GRID TICKS, PENNSYLVANIA (NORTH AND SOUTH ZONES) PROJECTION: TRANSVERSE MERCATOR VERTICAL DATUM: NATIONAL GEODETIC DATUM OF 1929 HORIZONTAL DATUM: 1927 NORTH AMERICAN DATUM (GCS AND NAD83) PREPARED BY: U.S. GEOLOGICAL SURVEY

Reprinted by NIMA 01-01 FOR SALE BY U.S. GEOLOGICAL SURVEY DENVER, COLORADO 80226, OR RESTON, VIRGINIA 22082

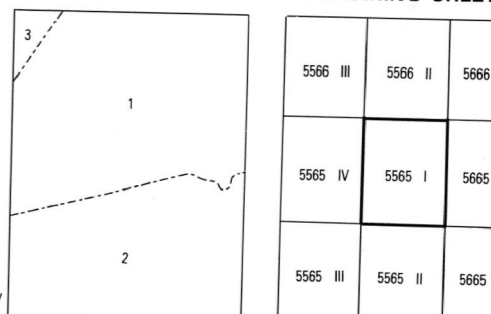
Grid zone identification and reference information including sample points and conversion instructions.

USERS SHOULD REFER CONNECTIONS, ADDITIONS, AND COMMENTS TO THE NIMA OPERATIONAL HELP DESK: 1-800-455-0898, COMMERCIAL 314-263-8864, OR WRITE TO DIRECTOR, NATIONAL IMAGERY AND MAPPING AGENCY, ATTN: ES, MAIL STOP L-88, 4600 SANDHURST ROAD, BETHESDA, MD 20816-5002.



THIS MAP IS RED-LIGHT READABLE

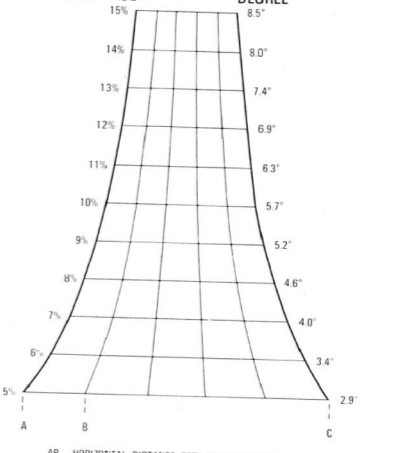
BOUNDARIES



ADJOINING SHEETS

Table listing adjoining sheet numbers: 5566 II, 5566 III, 5565 IV, 5565 III, 5565 II, 5565 I.

SLOPE GUIDE



ELEVATION GUIDE

