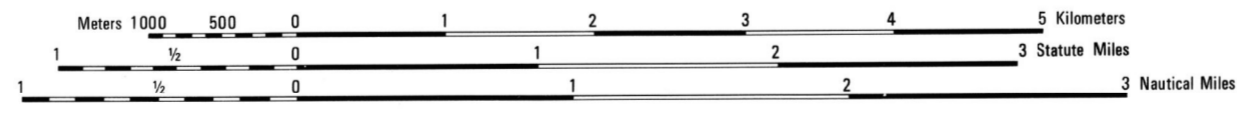


Prepared by the U. S. Geological Survey for publication by the Defense Mapping Agency Hydrographic/Topographic Center, Washington, D. C.
 MAP INFORMATION AS OF 1977

SCALE 1:50,000

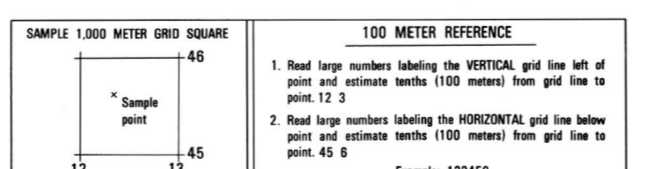


ELEVATIONS IN METERS

CONTOUR INTERVAL 10 METERS

SPHEROID: CLARKE 1866
 GRID: 1000-METER UTM ZONE 18 (BLACK NUMBERED LINES)
 10,000-FOOT STATE GRID TICS, NEW JERSEY
 PROJECTION: TRANSVERSE MERCATOR
 VERTICAL DATUM: NATIONAL GEODETIC VERTICAL DATUM OF 1929
 HORIZONTAL DATUM: 1927 NORTH AMERICAN DATUM
 PREPARED BY: U. S. GEOLOGICAL SURVEY
 PUBLISHED BY: DMAHTC 7-88
 Reprinted by NIMA 11-01

FOR SALE BY U. S. GEOLOGICAL SURVEY, RESTON, VIRGINIA 22092



USERS SHOULD REFER TO CORRECTIONS, ADDITIONS, AND COMMENTS TO THE NIMA OPERATIONAL HELP DESK
 1-800-455-8899; COMMERCIAL 314-383-4884; DSN 893-4884; OR WRITE TO: DIRECTOR, NATIONAL IMAGERY AND
 MAPPING AGENCY, ATTN: ES, MAIL STOP 1-88, 4600 SANGAMORE ROAD, BETHESDA, MD 20816-5003.

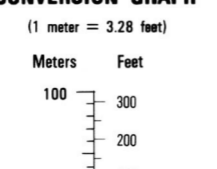


LEGEND

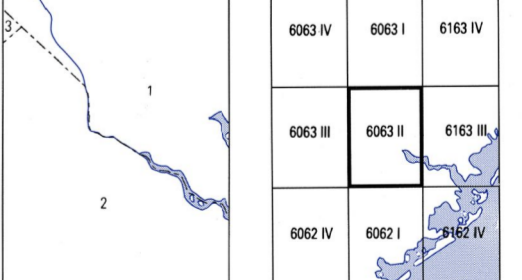
CAUTION: ALL TELEPHONE AND ELECTRIC SERVICE LINES ARE NOT SHOWN.
 A LANE ON THIS MAP IS CONSIDERED TO BE 2.5 METERS WIDE.
 IN DEVELOPED AREAS ONLY THROUGH ROADS ARE CLASSIFIED.
 THERE MAY BE PRIVATE BOUNDARIES WITHIN THE BOUNDARIES OF
 THE NATIONAL OR STATE RESERVATIONS SHOWN ON THIS MAP.
 SLOPES ON THIS MAP ARE LESS THAN 5%.

- Divided highway with median strip
- Primary, all weather, hard surface
- Secondary, all weather, hard surface
- Light duty, all weather, hard or improved surface
- Fair or dry weather, unimproved surface
- Trail
- Route markers: Interstate, Federal, State
- Bridge
- Railroads (Standard gauge 1.44m. - 4 3/4")
- Multiple track
- Transporting
- Railroad station: Location known, Location unknown
- Car line
- Railroad bridge
- Tunnel: Highway, Railroad
- Boundaries: National, with monument
- State, territory
- County, parish
- Incorporated city, village, town
- Reservation: National, State, Military
- Power transmission line
- Buildings
- Structures
- Church, School
- Power substation
- Windmill, Watermill
- Well, Tank
- Mine shaft
- Open pit mine or quarry
- Horizontal control station
- Bench mark, monument
- Bench mark, non-monumented
- Spot elevation, no monument
- Spot elevation, monument
- Leaves, vines, filices
- Bluffs, cliffs
- Woodland
- Scattered trees, Scrub
- Viewshed: Orchard, plantation
- Intersecting lake: Open, Earthfill, Masonry
- Stream: Perennial, Intermittent
- Marsh, swamp
- Small falls, Large falls
- Small rapids, Large rapids

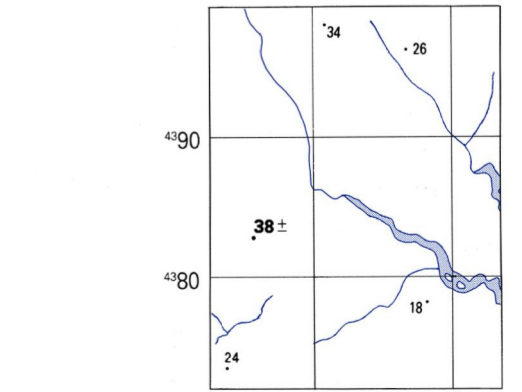
CONVERSION GRAPH



BOUNDARIES



ELEVATION GUIDE



THIS MAP IS RED-LIGHT READABLE

