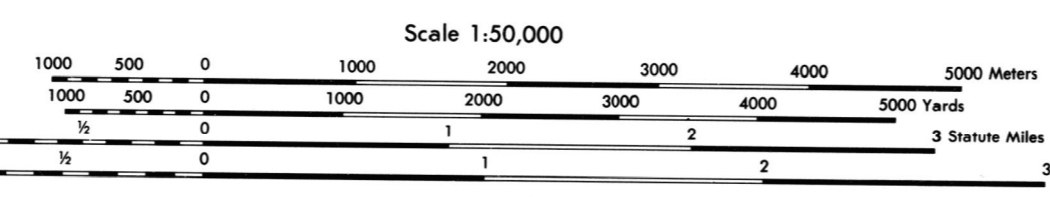


Prepared and published by the Defense Mapping Agency
Topographic Center, Washington, D. C.



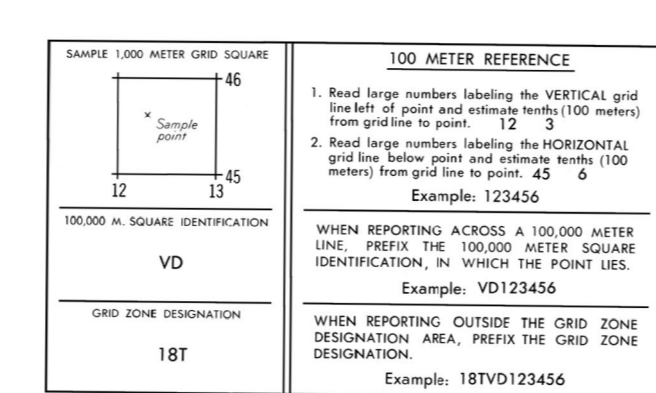
LEGEND
MAP INFORMATION AS OF 1975

- ON THIS MAP, A LANE IS GENERALLY CONSIDERED AS BEING A MINIMUM OF 2.5 METERS (8 FEET) IN WIDTH
- ROADS**
 - Divided highway with median strip
 - Primary all weather, hard surface, two or more lanes wide
 - Secondary all weather, hard surface, two or more lanes wide
 - Light duty, all weather, hard or improved surface
 - Fair or dry weather, unimproved surface
 - Trail
 - Route markers: Interstate, Federal, State
 - RAILROADS** (Standard gauge: 1.43m-4'8 1/2")
 - Single track
 - Multiple track, non-operating
 - Railroad station: Position known; Position unknown
 - Car line
 - BOUNDARIES**
 - National
 - State, territory
 - County, parish, municipio
 - Civil township, precinct, town, barrio
 - Incorporated city, village, town, hamlet
 - Reservation: National, state, military
 - Power transmission line
 - Buildings or structures**
 - Church, School
 - Watermill
 - Windmill, wind pump
 - Mine, vertical shaft
 - Mine, horizontal shaft
 - Open pit mine or quarry, inactive
 - Open pit mine or quarry, active
 - Benches, mark, monument
 - Bench mark, non-monumented
 - Spot elevation in meters: Checked; Unchecked
 - Woodland; Scrub**
 - Vineyard; Orchard
 - Intermittent lake
 - Intermittent stream; Dam
 - Marsh or swamp
 - Rapid, Fall
 - Large rapids; Large falls

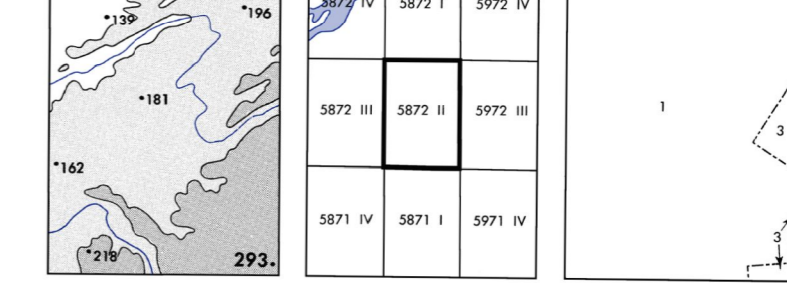
ELEVATIONS IN METERS

CONTOUR INTERVAL TO METERS

SPHEROID CLARKE 1866
 GRID 1,000 METER UTM ZONE 18
 PROJECTION TRANSVERSE MERCATOR
 VERTICAL DATUM NATIONAL GEODETIC VERTICAL DATUM OF 1929
 HORIZONTAL DATUM 1927 NORTH AMERICAN DATUM
 CONTROL BY USGS AND USCGS
 PRINTED BY DEFENSE MAPPING AGENCY TOPOGRAPHIC CENTER 9-78



ELEVATION GUIDE ADJOINING SHEETS BOUNDARIES



1. Jefferson County
 2. Lawrence County
 3. Lewis County

THIS MAP IS RED-LIGHT READABLE

USERS SHOULD REFER CORRECTIONS, ADDITIONS, AND COMMENTS TO THE NSA OPERATIONAL HELP DESK:
 1-800-455-0898; COMMERCIAL 314-263-4864; DSN 693-4864; OR WRITE TO: DIRECTOR, NATIONAL GEOSPATIAL
 INTELLIGENCE AGENCY, ATTN: ES, MAIL STOP L-88, 4600 SANGAMON ROAD, BETHESDA, MD 20818-5003.