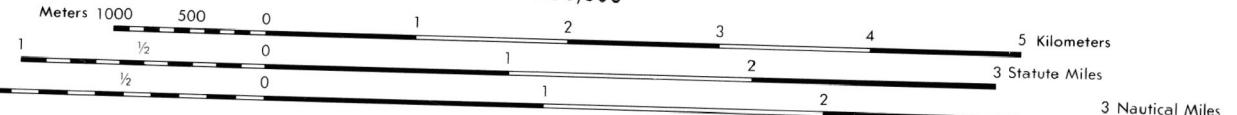


Prepared by the U.S. Geological Survey for publication by the Defense Mapping Agency Hydrographic/Topographic Center, Washington, D.C.

LEGEND

- ON THIS MAP A LANE IS GENERALLY CONSIDERED AS BEING A MINIMUM OF 2.5 METERS (8 FEET) IN WIDTH IN DEVELOPED AREAS. ONLY THROUGH ROADS ARE CLASSIFIED
- MAP INFORMATION AS OF 1980**
- ROADS**
 - Divided highway with median strip
 - Primary, all weather, hard surface
 - Secondary, all weather, hard or improved surface
 - Fair or dry weather, unimproved surface
 - Trail
 - Route markers: Interstate, Federal, State
 - Bridges: With superstructure, Without superstructure
 - Roadcrossovers (Standard gauge 1.44m - 4'8 1/2")
 - Single track
 - Multiple track
 - Nonoperating
 - Railroad station, location known, location unknown
 - Car line
 - Railroad bridge: With superstructure, Without superstructure
 - Tunnel: Highway, Railroad
 - BOUNDARIES**
 - National, with monument
 - State, territory
 - County, parish
 - Civil township, town
 - Incorporated city, village, town
 - Reservation: National, State, Military
 - POWER**
 - Power transmission line
 - Buildings
 - Church, School
 - Power substation
 - Windmill, Watermill
 - Well, Tank
 - Mine shaft
 - Open pit mine or quarry
 - Horizontal control station
 - Bench mark, monument
 - Bench mark, non-monumented
 - Spot elevations in meters
 - Levees, rims, dikes
 - Bluffs, cliffs
 - Woodland
 - Scattered trees, scrub
 - Vineyard, Orchard, plantation
 - Intermittent lake, Dam: Earthen, Masonry
 - Stream: Perennial, Intermittent
 - Marsh, swamp
 - Small rapids, Small falls
 - Large rapids, Large falls
 - RAILROADS**
 - Standard gauge 1.44m - 4'8 1/2"
 - Multiple track
 - Nonoperating
 - Railroad station, location known, location unknown
 - Car line
 - Railroad bridge: With superstructure, Without superstructure
 - Tunnel: Highway, Railroad
 - OTHER**
 - Spot elevations in meters
 - Levees, rims, dikes
 - Bluffs, cliffs
 - Woodland
 - Scattered trees, scrub
 - Vineyard, Orchard, plantation
 - Intermittent lake, Dam: Earthen, Masonry
 - Stream: Perennial, Intermittent
 - Marsh, swamp
 - Small rapids, Small falls
 - Large rapids, Large falls

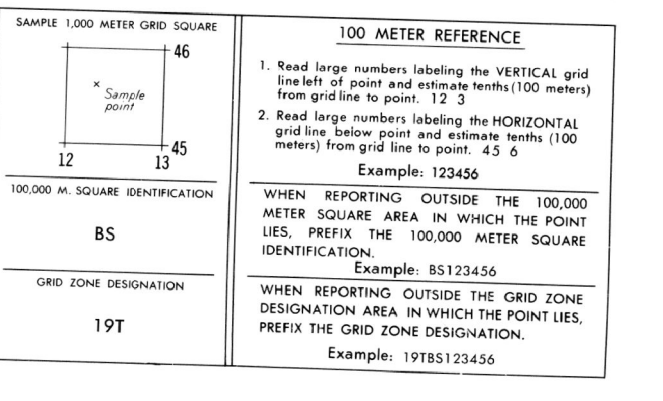


ELEVATIONS IN METERS

CONTOUR INTERVAL 10 METERS

SPHEROID CLARKE 1866
GRID 1000-METER UTM ZONE 19 (BLACK NUMBERED LINES)
1000-METER UTM ZONE 19 (BLUE NUMBERED TICKS)
10,000-FOOT STATE GRID TICKS, CONNECTICUT AND RHODE ISLAND
PROJECTION TRANSVERSE MERCATOR
VERTICAL DATUM NATIONAL GEODESIC VERTICAL DATUM OF 1929
HORIZONTAL DATUM 1927 NORTH AMERICAN DATUM
CONTROL BENCH AND TRIANGULAR
PREPARED BY U.S. GEOLOGICAL SURVEY
 Reprinted by NIMA 04-99

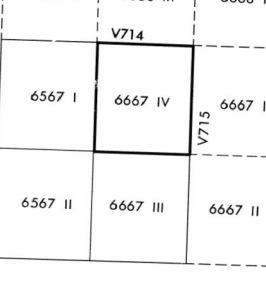
FOR SALE BY U. S. GEOLOGICAL SURVEY, RESTON, VIRGINIA 22092



ELEVATION GUIDE



ADJOINING SHEETS



BOUNDARIES



USERS SHOULD REFER CORRECTIONS, ADDITIONS, OR COMMENTS TO THE NIMA CUSTOMER HELP DESK: 1-800-853-6842 OR BY MAIL TO: DIRECTOR, NATIONAL IMAGERY AND MAPPING AGENCY, ATTN: CDR, MAIL STOP 37, 4800 SANGHAR ROAD, BETHESDA, MD 20815-5003

THIS MAP IS RED-LIGHT READABLE

