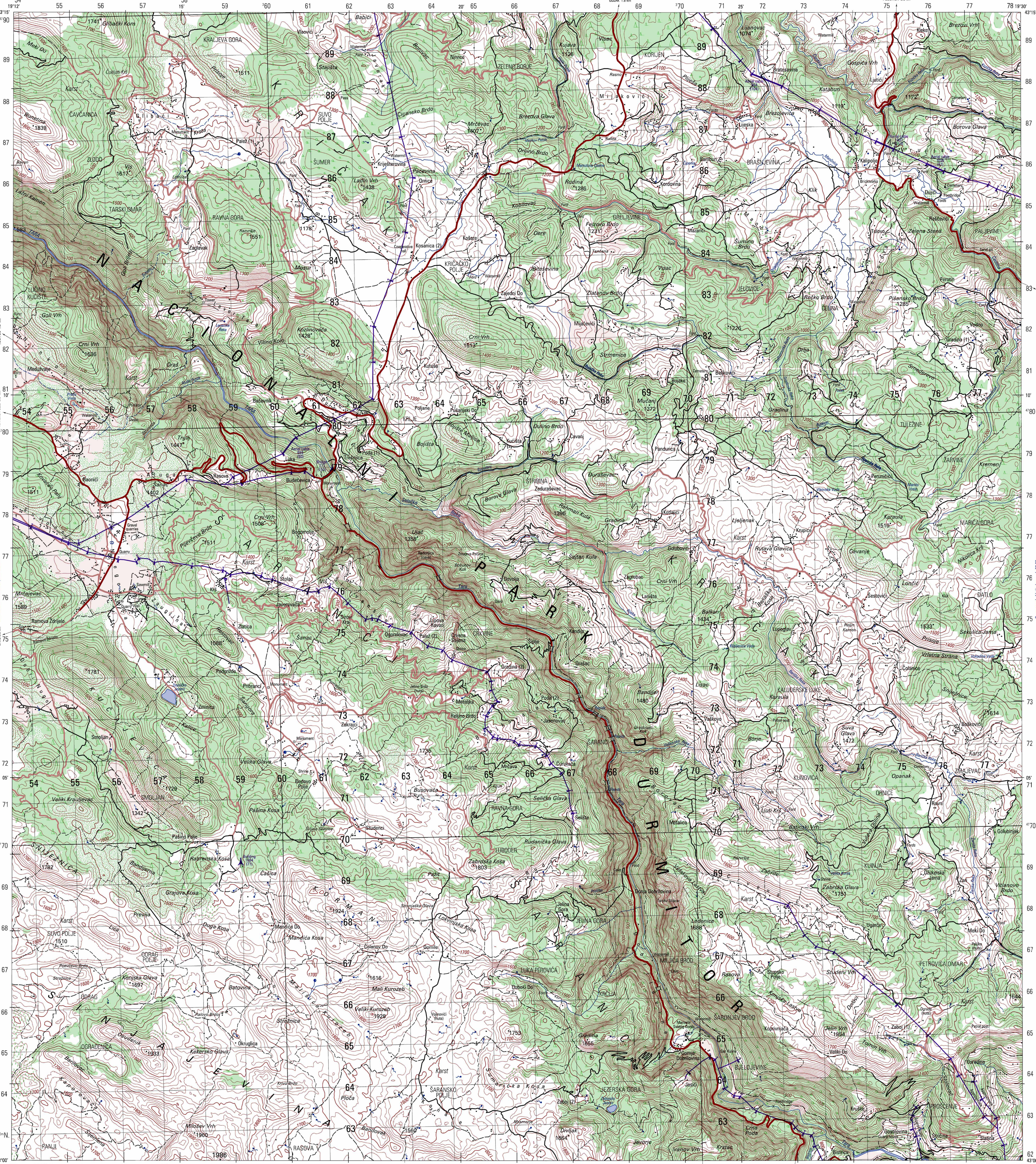
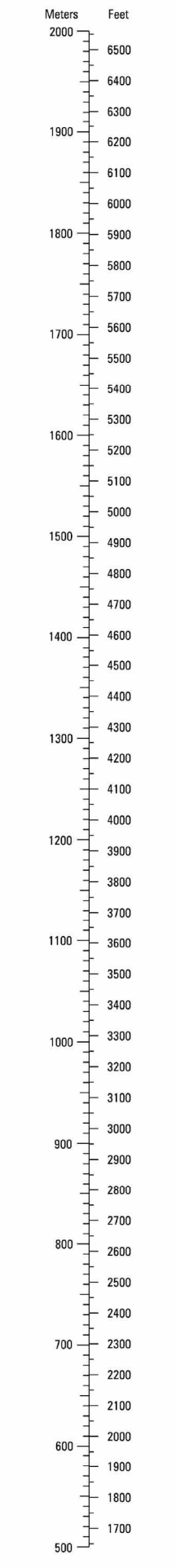


One second of longitude equals 22.55m

PROJICIA 25 km



CONVERSION GRAPH



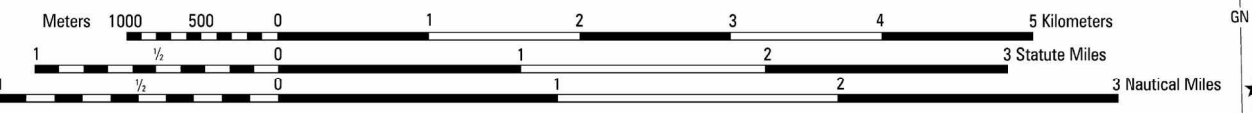
Prepared and published by the National Imagery and Mapping Agency.

MAP INFORMATION AS OF 2000. LEGEND. POPULATED PLACES, ROADS, RAILROADS, BOUNDARIES, MISCELLANEOUS CULTURAL FEATURES, MISCELLANEOUS RELIEF, VEGETATION, and other symbols.

NOTES. A LINE ON THIS MAP IS CONSIDERED TO BE AT LEAST 2.5 METERS (8 FEET) WIDE.

ELEVATIONS IN METERS. CONTOUR INTERVAL 20 METERS. ELIPSOID: WORLD GEODETIC SYSTEM 1984. GRID: TRANSVERSE MERCATOR.

GLOSSARY. Bordo, Brjuni, Dobra, etc. COORDINATE CONVERSION WGS 84 TO ED 50. GRID ZONE DESIGNATION: 34T.



SCALE 1:50,000. GRID CONVERGENCE 170' (0.3 MILS) FOR CENTER OF SHEET.

BOUNDARIES. ADJOINING SHEETS. ELEVATION GUIDE. SLOPE GUIDE. TO CONVERT A MAGNETIC AZIMUTH TO A GRID AZIMUTH, ADD G.M. ANGLE.