

CONVERSION GRAPH

11 meter = 3.28 feet

Meters Feet

3600 11700

3500 11400

3400 11100

3300 10800

3200 10500

3100 10200

3000 9900

2900 9600

2800 9300

2700 9000

2600 8700

2500 8400

2400 8100

2300 7800

2200 7500

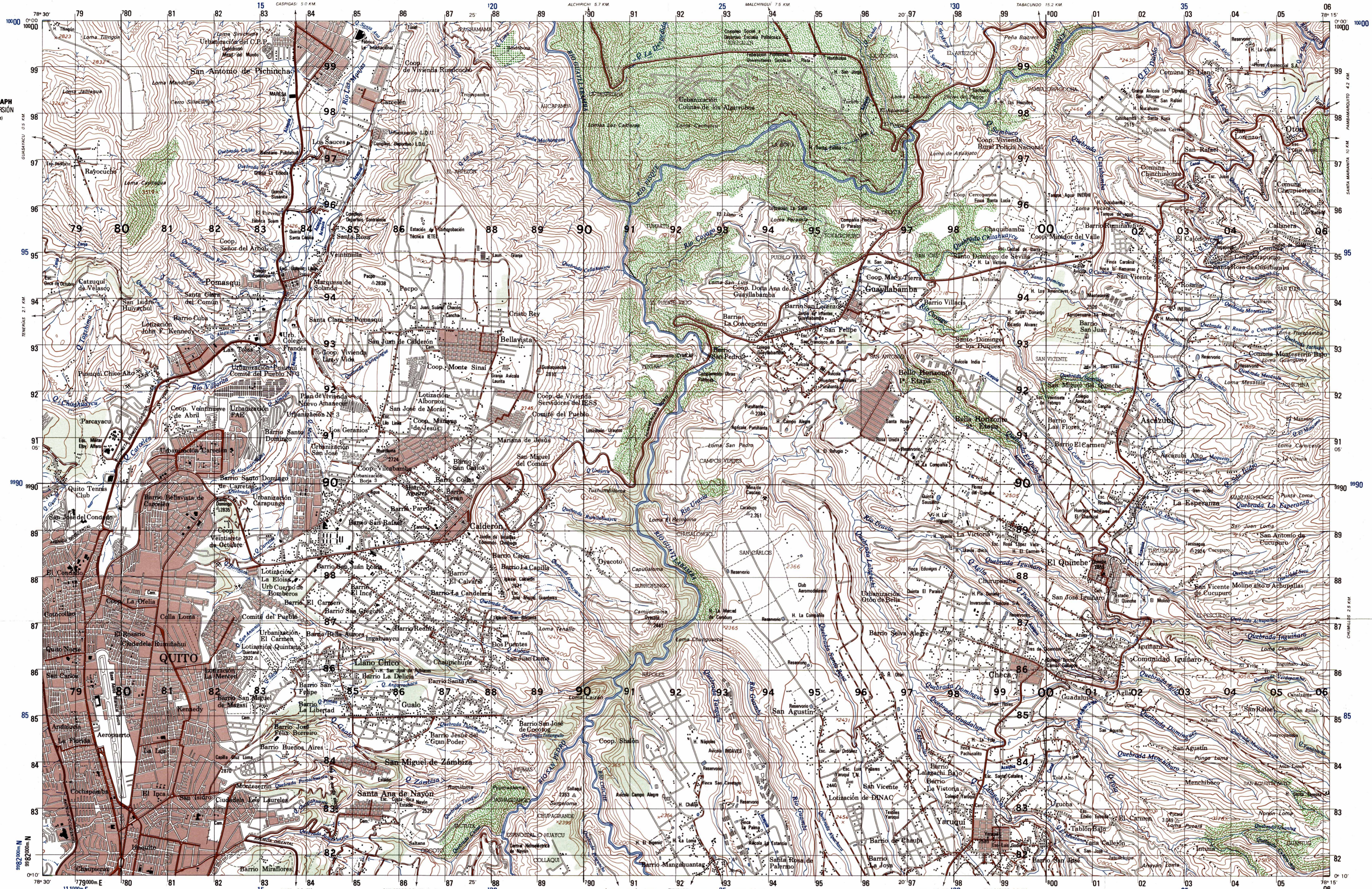
2100 7200

2000 6900

1900 6600

1800 6300

1700 6000



GLOSSARY

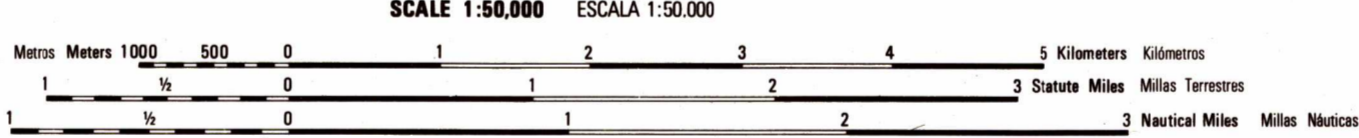
GLOSARIO

Table with 2 columns: English and Spanish terms. Includes terms like 'Aguaduz' (drainage channel), 'Agricultura' (agriculture), 'Alameda' (square), 'Avenida' (avenue), 'Asociación' (association), 'Barrío' (neighborhood), 'Campesinato' (public works camp), 'Cancha' (sports field), 'Carrizales' (goat track), 'Cen. Comarcas' (community center), 'Central Hidroeléctrica' (hydroelectric station), 'Comunidad' (community), 'Dib. Aerofotogramétrico' (aerial photograph), 'Esc. Colegio' (school), 'Estación de Compañía Telefónica ETE' (technical telephone company), 'Estadio' (stadium), 'Fábrica' (factory), 'Federación de Profesores Universitarios Católicos' (Catholic university teachers' federation), 'Fincas' (catholic university teachers), 'Finca' (community), 'Coop. Cooperativa' (cooperative), 'Esc. Escuela' (school), 'Escuela Militar' (military school), 'Estación de Compañía Telefónica ETE' (technical telephone company), 'Escuela' (school), 'Federación de Profesores Universitarios Católicos' (Catholic university teachers' federation), 'Finca' (catholic university teachers), 'Finca' (community), 'Granja Avícola' (poultry farm), 'H. Hacienda' (farm), 'Hacienda' (rural farm), 'Hacienda familiar' (family orchard), 'Iglesia' (church), 'INERHI' (ecuadorian hydraulic resource institute), 'Jardín de Frutas' (nursery school), 'Loma' (hill), 'Loteación' (development), 'Mina de carbón' (gravel mine), 'Pala' (rock), 'Piso' (building strip), 'Punto' (point), 'Q. Quebrada' (stream), 'Quinta' (farm), 'Reservorio' (reservoir), 'Río' (river), 'Tanque agua' (water tank), 'Terceros' (settlers), 'Urbanización' (underground conduit), 'Túnel' (tunnel), 'Urb. Urbanización' (development), 'Zona' (district).

ADJOINING SHEETS

HOJAS ADYACENTES

Table with 3 columns: Sheet ID, Name, and Coordinates. Includes sheets like CALCALA 3993-I, NANO 3993-I, QUITO 3993-I, SAN CARLOS 3993-II, and QUITO 3993-II.



ELEVATIONS IN METERS

ELEVACIONES EN METROS

NOTES NOTAS: IN BUILT-UP AREAS ONLY THROUGH ROUTES ARE CLASSIFIED. EN AREAS DESARROLLADAS SOLAMENTE SE CLASIFICAN LAS RUTAS RINOCES. THE WIDTH OF A LANE ON THIS MAP IS CONSIDERED TO BE AT LEAST 2.5 METERS WIDE. UN AN EN ESTE MAPA SE CONSIDERA COMO UN MÍNIMO DE 2.5 METROS DE ANCHO. CAUTION: NOT ALL TELEPHONE AND ELECTRIC SERVICE LINES ARE SHOWN. ADVERTENCIA: NO TODAS LAS LÍNEAS TELEFÓNICAS Y ELÉCTRICAS SE INDIKAN.

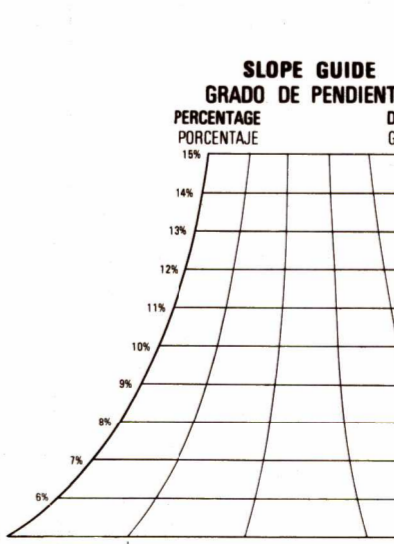
CONTOUR INTERVAL 40 METERS SUPPLEMENTARY CONTOURS 20 METERS. INTERVALO DE CURVAS 40 METROS CURVAS SUPLEMENTARIAS DE 20 METROS. Includes diagrams for grid squares and elevation references.

LIMITED DISTRIBUTION

THIS MAP IS RED LIGHT READABLE ESTE MAPA ES LEGIBLE BAJO LUZ ROJA

ELEVATION GUIDE

GUÍA DE ELEVACIÓN



LEGEND CONVENIONES: Roads, Canals, Railroads, Populated Places, Boundaries, etc. Includes symbols and descriptions for various features.