

Prepared by the Instituto Geográfico Militar (I.G.M.), Quito, Ecuador in collaboration with the National Imagery and Mapping Agency.

Preparado por el Instituto Geográfico Militar (I.G.M.), Quito, Ecuador, en colaboración con National Imagery and Mapping Agency.

Compiled in 1995 by stereophotogrammetric methods from aerial photography taken in 1981 and 1989. Cartographic compilation completed in 1997.

Compilado en 1995 por métodos estereofotogramétricos con fotografías aéreas tomadas en 1981 y 1989. Compilación cartográfica terminada en 1997.

LEGEND

	LUGARES POBLADOS
	ROADS
	RAILROADS
	BOUNDARIES
	MISCELLANEOUS CULTURAL FEATURES
	RELIEF

SÍMBOLOS CONVENCIONALES

	Bench mark
	Spot elevation
	Sand; Distorted surface
	Airfield; known
	information unknown
	Powerline
	Height above sea level
	Streams
	Ditches
	Well; Spring
	Land subject to natural inundation
	Swamp; Intermittent lake
	Shrimp hatchery; Rice paddy
	Salt evaporator
	Mangrove; Highland grass
	Woodland; Scattered trees
	Scrub; Tropical grass
	Orchard; Vineyard
	Area name

NOTES
IN BUILT-UP AREAS ONLY THROUGH ROUTES ARE CLASSIFIED. EN ÁREAS DESARROLLADAS SOLAMENTE SE CLASIFICAN LAS RUTAS TRONCALES.

CAUTION: NOT ALL TELEPHONE AND ELECTRIC SERVICE LINES ARE SHOWN. ADVERTENCIA: NO TODAS LAS LÍNEAS TELEFÓNICAS Y ELÉCTRICAS SE INDICAN.

COORDINATE CONVERSION WGS 84 TO PSAD 56. GRID ADD 201 m E; 400 384 m N. GEOGRAPHIC SUBTRACT 07° LONG.; SUBTRACT 12 02' LAT. CONVERSIÓN DE COORDENADAS WGS 84 A PSAD 56. CUADRICULA SUMAR 201 m E.; SUMAR 384 m N. GEOGRÁFICA RESTAR 07° LONG.; RESTAR 12' 02' LAT.

GLOSSARY

Alfombrado aproximado	approximate alignment
Contraste	mountain range
Cordillera	mountain range
Madre	mountain range
Loma	hill
No hay	none
Provincia	province
Quadrada, Q	first order administrative division
Rio, R	river
Valle	valley

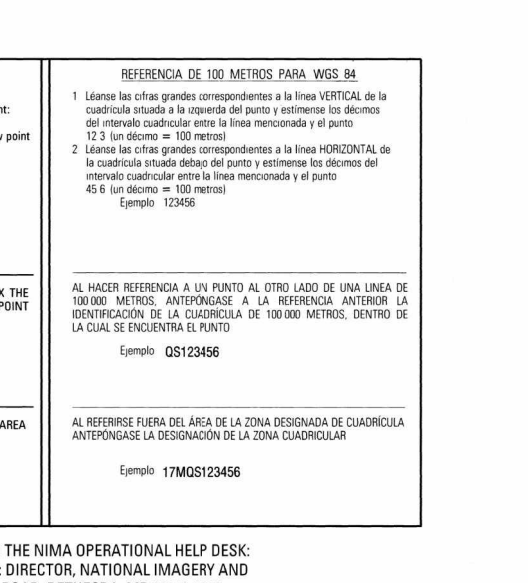
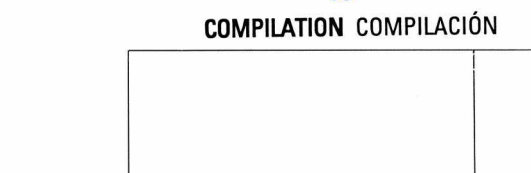
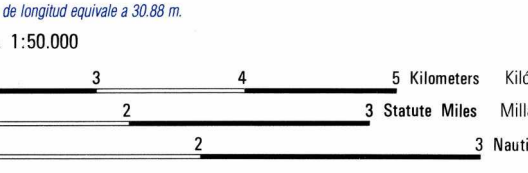
LIMITED DISTRIBUTION
Distribution authorized to: Bldg 10W 10 12 13; 1518 & 1555. Release authorized to: U.S. Dept. of Defense, NSA, ATTN: Release Office, Stop 7025. Obsolete on "For Official Use Only." Removal of this caveat is prohibited.

ELEVATIONS IN METERS
CONTOUR INTERVAL 40 METERS
SUPPLEMENTARY CONTOURS 20 METERS

ELEVACIONES EN METROS
INTERVALO DE CURVAS 40 METROS
CURVAS SUPLEMENTARIAS DE 20 METROS

ELIPSOID
WORLD GEODETIC SYSTEM 1984
GRID ADD 201 m E; 400 384 m N.
CONVERSIÓN DE COORDENADAS WGS 84 A PSAD 56.
CUADRICULA SUMAR 201 m E.; SUMAR 384 m N.
GEOGRÁFICA RESTAR 07° LONG.; RESTAR 12' 02' LAT.

USERS SHOULD REFER TO CORRECTIONS, ADDITIONS, AND COMMENTS TO THE NIMA OPERATIONAL HELP DESK: 1-800-455-0895; COMMERCIAL 314-326-8868; OR WRITE TO: DIRECTOR, NATIONAL IMAGERY AND MAPPING AGENCY, ATTN: ES. MAIL STOP 1-88, 4600 BANGAMORE ROAD, BETHESDA, MD 20818-3033.



GRID CONVERGENCE
CONVERGENCIA DE CUADRICULA
FOR CENTER OF SHEET
PARA EL CENTRO DE LA HOJA

TO CONVERT A MAGNETIC AZIMUTH TO A GRID AZIMUTH
PARA CONVERTIR UN ACIMUT MAGNÉTICO A UN ACIMUT DE CUADRICULA
SUBTRACT G-M ANGLE
RESTESE EL ANGLADO G-M

TO CONVERT A GRID AZIMUTH TO A MAGNETIC AZIMUTH
PARA CONVERTIR UN ACIMUT DE CUADRICULA A UN ACIMUT MAGNÉTICO
ADD G-M ANGLE
SUMAR EL ANGLADO G-M