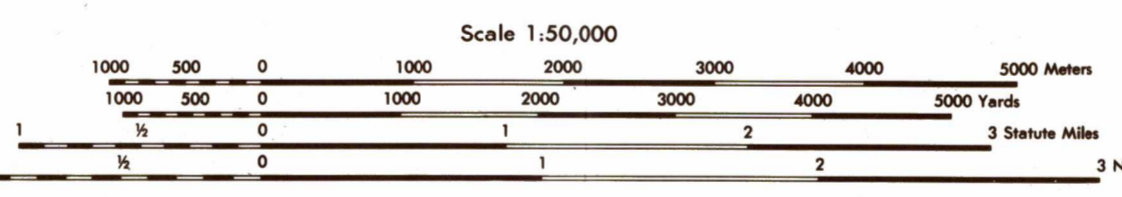


Prepared and published by the Defense Mapping Agency Hydrographic/Topographic Center, Washington, D.C.



ROADS: Dual highway, All weather, hard surface, two or more lanes wide, etc.

CAMINOS: Para todo tiempo, carretera, mejorada, dos o más vías, etc.

Power transmission line, Cercas, Muro, Building, Church, School, Cemetery, etc.

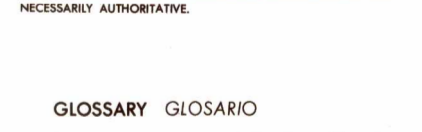
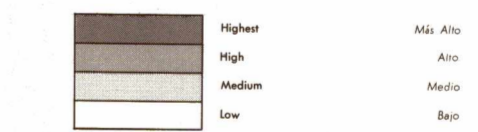
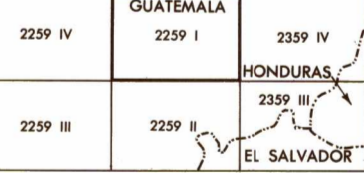
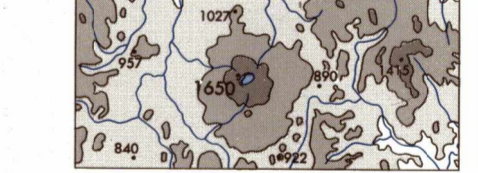
Lineas de transmisión, Edificio, Iglesia, Escuela, Cementerio, Molino de viento, etc.

CONTOUR INTERVAL 20 METERS, SUPPLEMENTARY CONTOURS 10 METERS. Includes a diagram of contour lines.

ELEVATION GUIDE: Higher, High, Medium, Low.

ADJOINING SHEETS: 2260 III, 2259 IV, 2259 I, 2259 II, 2259 III.

BOUNDARIES: DEPARTAMENTO DE JALAPA, DEPARTAMENTO DE CHIQUIMULA, DEPARTAMENTO DE JUTIAPA.



TO CONVERT A MAGNETIC AZIMUTH TO A GRID AZIMUTH... TO CONVERT A GRID AZIMUTH TO A MAGNETIC AZIMUTH...

TO CONVERT A MAGNETIC AZIMUTH TO A GRID AZIMUTH... TO CONVERT A GRID AZIMUTH TO A MAGNETIC AZIMUTH...

TO CONVERT A MAGNETIC AZIMUTH TO A GRID AZIMUTH... TO CONVERT A GRID AZIMUTH TO A MAGNETIC AZIMUTH...