

Prepared by the Instituto Geográfico Militar (IGM) Guatemala with the collaboration of the Defense Mapping Agency, Inter American Geodesic Survey, Published by the Defense Mapping Agency, Hydrographic Topographic Center (PRC), Washington, D.C. 20315-0020

Map updated with photogrammetric methods from aerial photography taken in Feb. 1987. Map not field checked.

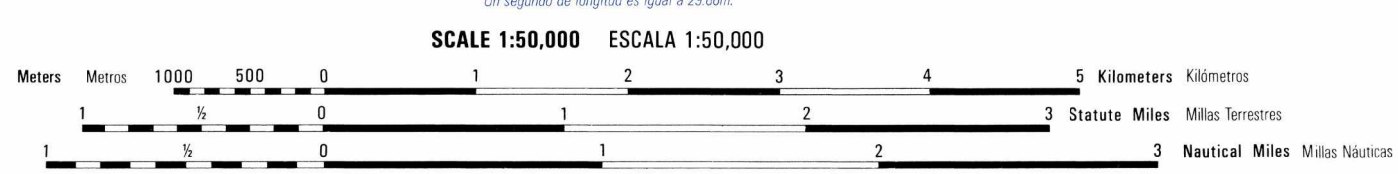
Mapa actualizado con métodos fotogramétricos con fotografías aéreas tomadas en Feb. 1987. Mapa sin comprobación de campo.

NOTES / NOTAS

IN BUILT UP AREAS ONLY ROUTES ARE CLASSIFIED. EN ÁREAS DESARROLLADAS SOLAMENTE SE CLASIFICAN LAS RUTAS TRONCALES.

THE WIDTH OF A LANE ON THIS MAP IS CONSIDERED TO BE AT LEAST 2.5 METERS WIDE. UNA VÍA EN ESTE MAPA SE CONSIDERA CON UN MÍNIMO DE 2.5 METROS DE ANCHO.

CAUTION: NOT ALL TELEPHONE AND ELECTRIC SERVICE LINES ARE SHOWN. ADVERTENCIA: NO TODAS LAS LÍNEAS TELEFÓNICAS Y ELÉCTRICAS SE MUESTRAN.



ELEVATIONS IN METERS / ELEVACIONES EN METROS

CONTOUR INTERVAL 20 METERS / INTERVALO DE CURVAS 20 METROS. SUPPLEMENTARY CONTOURS 10 METERS / CURVAS SUPLEMENTARIAS CADA 10 METROS.

Table with 2 columns: ELLIPSOID and PROYECCION. It lists the datum used (Clarke 1866), the projection (Transverse Mercator), and the grid system (1:500,000 UTM Zone 15).

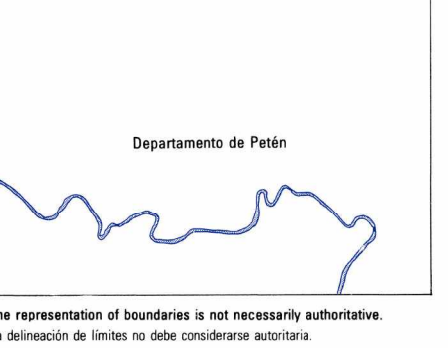
Grid convergence and slope guide information. Includes a diagram showing grid convergence and a table for converting magnetic azimuth to grid azimuth. It also includes a slope guide table for converting percentage to degrees.

THIS MAP IS RED-LIGHT READABLE / ESTE MAPA ES LEGIBLE BAJO LUZ ROJA

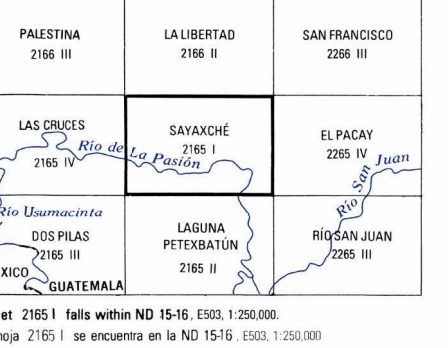
LIMITED DISTRIBUTION / DISTRIBUCION LIMITADA

Distribution authorized in the U.S. only for U.S. Government employees and their families. Distribution outside the U.S. is limited to U.S. Government employees and their families.

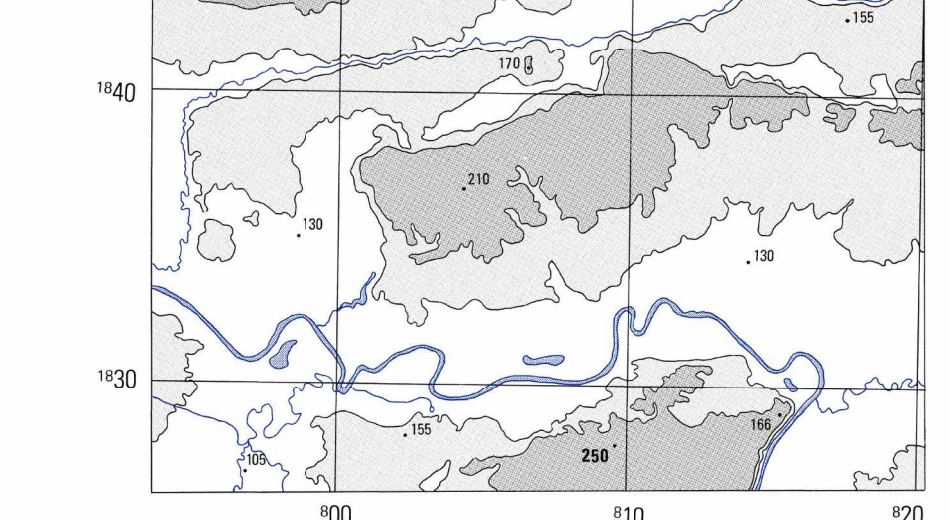
BOUNDARIES / LÍMITES



ADJOINING SHEETS / HOJAS ADYACENTES



ELEVATION GUIDE / GUÍA DE ELEVACIÓN



LEGEND / SIGNOS CONVENCIONALES. A large table listing symbols for roads, railways, populated places, boundaries, and other features. It includes symbols for various types of roads, railways, and land use.

GLOSSARY / GLOSARIO

Table listing various geographical and technical terms in Spanish and their corresponding symbols or descriptions. It includes terms like 'Agriario', 'Área arqueológica', 'Área restringida', etc.

USERS SHOULD REFER TO THE MIMA CUSTOMER HELP DESK 1-800-456-0888 FOR ADDITIONAL INFORMATION. ADDITIONS AND COMMENTS TO THE MIMA CUSTOMER HELP DESK 1-800-456-0888.

CONVERSION GRAPH / GRÁFICO DE CONVERSIÓN. A scale bar showing the conversion between meters and feet. It includes a note that 1 meter equals 3.28 feet.

NSN 754-010-010-0100. EDITION 1-DMA. SHEET 2165 I.