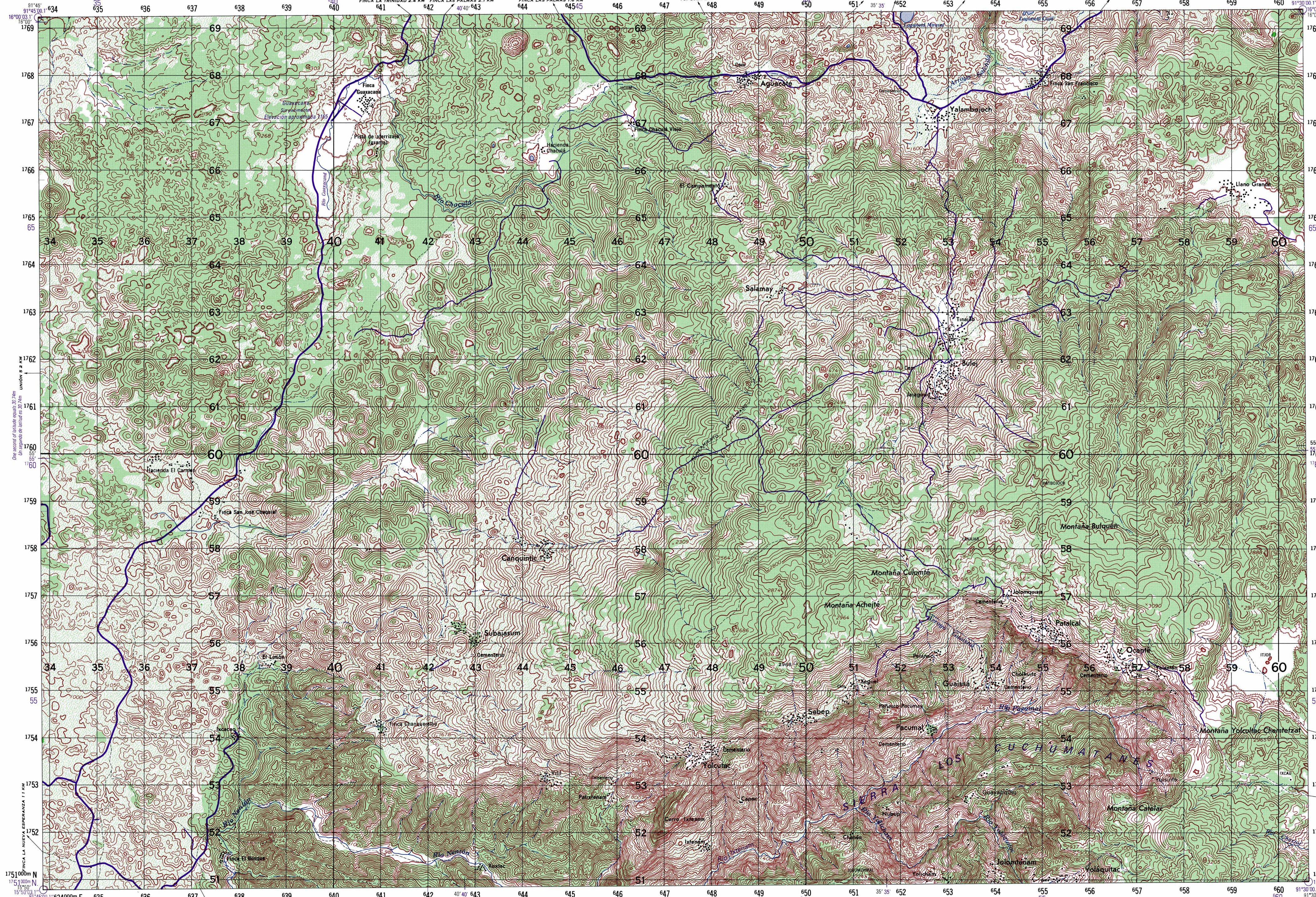


One second of longitude equals 29.73m
Un segundo de longitud es 29.73m



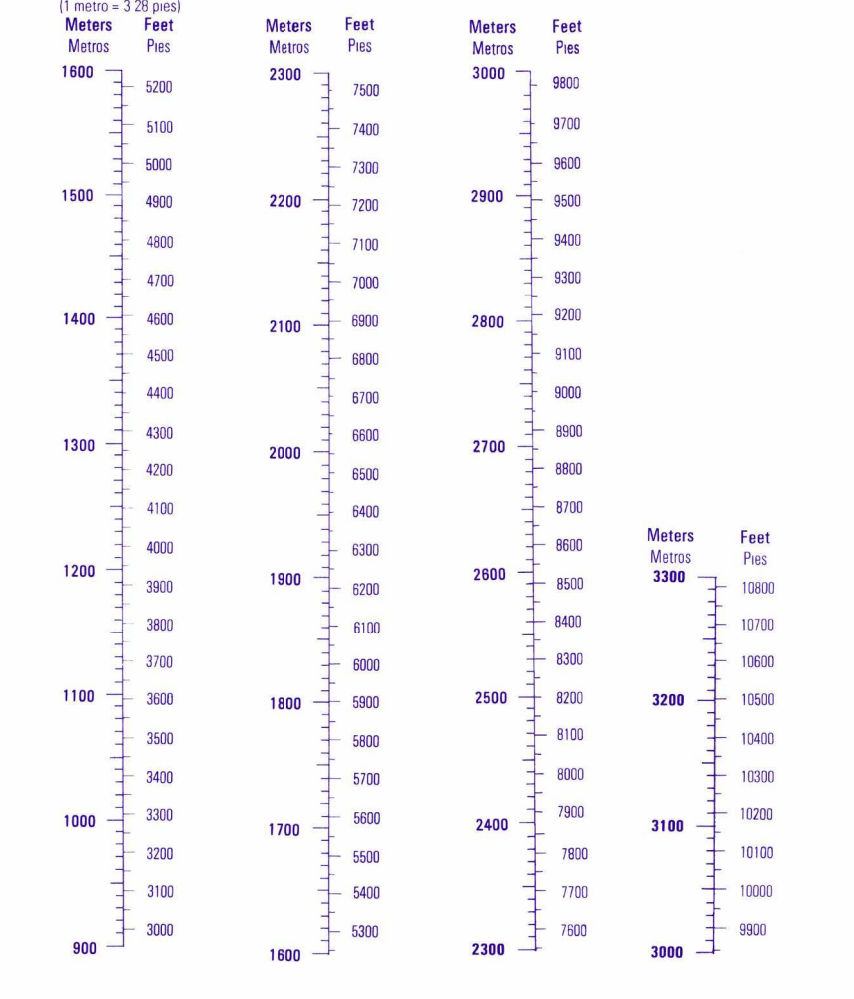
LEGEND
SIGNOS CONVENCIONALES
On this map a line is considered as being a minimum of 2.5 meters in width
En este mapa se considera que una línea tiene un ancho mínimo de 2.5 metros

ROADS	Transitable todo el año	CAMINOS	Transitable todo el año
All weather	Afirmado sólido,		
Hard surface,	dos o más vías		
two or more lanes wide	Revestimiento suelto o ligero,		
Loose or light surface	a vías		
two or more lanes wide	Afirmado sólido, una vía		
Hard surface, one lane wide	Revestimiento suelto o ligero,		
Loose or light surface,	una vía		
one lane wide	Transitable en tiempo bueno o seco,		
Fair or dry weather,	revestimiento suelto		
loose surface	Rodera		
Cart track	Venda, senda		
Footpath, trail	Puente para vehículos		
Bridge for vehicles	Señales de ruta: Departamental:		
Route markers: Departmental:	Central American; National		
Central American; National	FERROCARRILES		
RAILROADS	Vía normal (sencilla)		
Normal gauge, single track	Vía estrecha (sencilla)		
Narrow gauge, single track	Área urbanizada o construida		
BUILT-UP AREA	LIMITES		
International; Boundary marker	International; Mojin limite		
Primary administrative	Departmental		
Secondary administrative	Municipal		
Power transmission line; Fence	Línea transmisora de energía; Cerco		
Area name	CARTAGENA		
Athletic field; Coffee drying floor	Campo deportivo; Patio de café		
Building; Structure; Church; School; Mine	Casa; rancho; Iglesia; Escuela; Mina		
Windmill; windpump; Water mill	Molino de viento; Bomba de agua		
Tank; Landmark object	Tanque; Punto conspicuo		
Horizontal control point	Punto de control horizontal		
Bench mark	Movimiento de cota tipo		
Spot elevations in meters:	Elevaciones en metros:		
Checked; Unchecked	Comprobadas; No comprobadas		
Sand; Distorted surface	Arena; Superficie deformada		
Woods; brushwood; Scrub	Bosque; monte alto; Matorral; monte bajo		
Orchard or plantation; Tropical grass	Huerta o plantación; Hierba tropical		
Mangrove; Nipa	Manglar; Nipa		
Rice; Salt evaporator	Arrozal; Salina		
Land subject to inundation;	Terreno sujeto a inundación:		
Dry stream or wash	Rio seco o aluvión		
Well; Spring; Intermittent stream	Pozo; Manantial; Rio intermitente		
Intermittent lake	Lago o charco intermitente		
Marsh or swamp; Dam	Ciénaga o pantano; Represa		
Large rapids; Large falls	Rápidos grandes; Cascadas grandes		
Rapids; Falls; Pier	Rápidos; Cascada; Muelle		
Exposed wreck	Naufragio al descubierto		
Sunken wreck; Anchorage	Naufragio sumergido; Anclaje		
Sunken rock	Roca sumergida		
Stock, unweaving or awash	Peligro submarino de índole general		
Limit of danger	Sondeos en fathoms;		
Soundings in fathoms;	Bajo de antelapaya		
Foreshore flat	Atrecel; Luz; Faro		
Beef; Light; Lighthouse	Curvas de profundidad en fathoms		
Depth curves in fathoms			

GLOSSARY
GLOSARIO

Alineamiento aproximado	approximate alignment
Arroyo	stream
Caja, Cementerio	cemetery
Cerro	hill
Departamento	first order administrative division
Elevación aproximada	approximate elevation
Finca	farm
Gruta	cave
Hacienda	hacienda
Laguna	lake
Laguneta	small lake
Montaña	mountain
Pista de aterrizaje	landing strip
Rio	stream
Sin pavimentar	loose surface
Siena	measuring

CONVERSION GRAPH
GRÁFICA DE CONVERSIÓN



Prepared and published by the Defense Mapping Agency
Aerospac Center, St. Louis, MO.

MAP INFORMATION AS OF 1991
Prepared by the Army Map Service (SM), Corps of Engineers, U.S. Army, Washington, D.C. Compiled in 1963 by photogrammetric methods. Aerial photography February 1962. Horizontal and vertical control established by the Dirección General de Cartografía de Guatemala and Inter American Geodetic Survey. Map field checked in 1964 by the Dirección General de Cartografía and Inter American Geodetic Survey.

LIMITED REVISION AS OF 1993
REVISIÓN LIMITADA HASTA 1993

NOTES
ROAD CLASSIFICATION SHOULD BE REFERRED TO WITH CAUTION.
DMS IS UPDATING THE MILITARY GRID REFERENCE SYSTEM. UNTIL ALL ADJACENT AND OVERLAPPING SHEETS ARE CONVERTED, THE NEW GRID VALUES ARE DEPICTED IN PURPLE AND THE OLD IN BLACK.
DMS IS UPDATING THE MILITARY GRID REFERENCE SYSTEM. UNTIL ALL ADJACENT AND OVERLAPPING SHEETS ARE CONVERTED, THE NEW GRID VALUES ARE DEPICTED IN PURPLE AND THE OLD IN BLACK.
DMS IS UPDATING THE MILITARY GRID REFERENCE SYSTEM. UNTIL ALL ADJACENT AND OVERLAPPING SHEETS ARE CONVERTED, THE NEW GRID VALUES ARE DEPICTED IN PURPLE AND THE OLD IN BLACK.

LEGEND
Observation taller than 61m
Tall object
Aerfield Runway
Heliport, Seaplane base
Built-up area
Building
Surface road
All weather road
Surface light
Fair/dry weather road
Track, street
Bridge
Landmark feature

LEYENDA
Observación de más de 61m de altura
Objeto alto
Pista de campo de aviación
Muelle, Base de hidroaviones
Zona edificada
Edificio
Carretera pavimentada
Carretera asfaltada
Carretera de superficie
Carretera de tiempo bueno o seco
Luz de superficie
Carretera de tiempo bueno o seco
Calle, calle
Puente
Monumento

GRID CONVERSION
GRID COORDINATE
CONVERSION TABLE
FOR CENTER OF SHEET

TRANSVERSE MERCATOR PROJECTION
HORIZONTAL DATUM: NORTH AMERICAN DATUM 1927
DATUM HORIZONTAL: DATUM NORTEAMERICANO DE 1927
HORIZONTAL DATUM: NORTH AMERICAN DATUM 1983
DATUM HORIZONTAL: DATUM NORTEAMERICANO DE 1983

ELEVATIONS IN METERS
ELEVACIONES EN METROS
CONTOUR INTERVAL 20 METERS WITH SUPPLEMENTARY CONTOURS AT 10 METER INTERVALS
CURVAS DE NIVEL CON INTERVALOS DE 20 METROS Y SUPLEMENTARIAS CON INTERVALOS DE 10 METROS
VERTICAL DATUM: MEAN SEA LEVEL

BOUNDARY DIAGRAM
DIAGRAMA DE LIMITES

ADJOINING SHEETS
HOJAS ADYACENTES

ELEVATION GUIDE
GUIA DE ELEVACIÓN

LIMITED DISTRIBUTION
DISTRIBUCIÓN LIMITADA

THIS MAP IS RED LIGHT READABLE
ESTE MAPA ES LEGIBLE BAJO LUZ ROJA

