

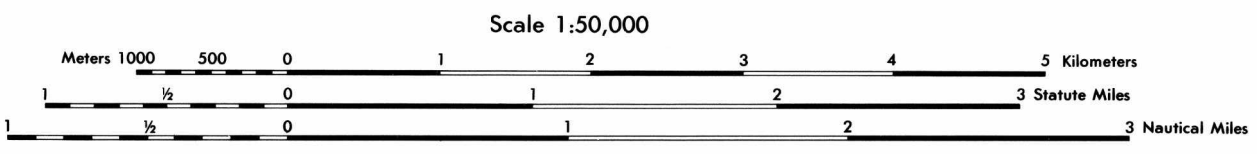
Prepared and published by the Defense Mapping Agency Hydrographic/Topographic Center, Washington, D. C.

LEGEND SIGNOS CONVENCIONALES

Table with two columns: English legend and Spanish legend. It lists symbols for roads, power lines, buildings, and other features.

GLOSSARY GLOSARIO

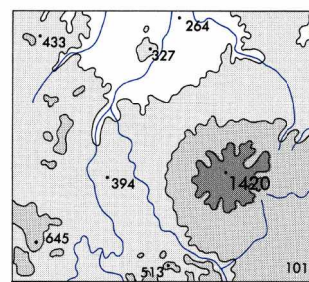
Table with two columns: English glossary and Spanish glossary. It lists terms like 'village', 'highway', 'hill', and 'reservoir' with their corresponding symbols.



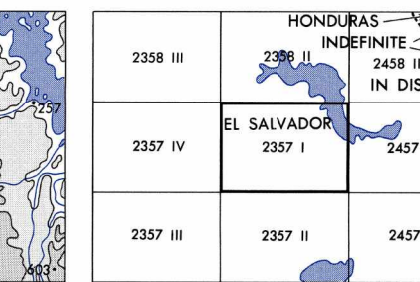
CONTOUR INTERVAL 20 METERS INTERVALO DE CURVAS 20 METROS. Spheroid: CLARKE 1866. GRID: 1,000 METER UTM ZONE 16. PROJECTION: TRANSVERSE MERCATOR.

Grid square identification instructions. Includes diagrams showing how to read grid coordinates (e.g., 46, 12, 13) and instructions for reporting across a 100,000 meter square.

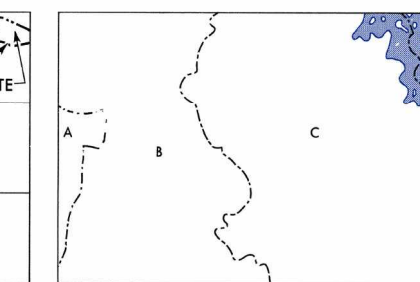
ELEVATION GUIDE GUÍA DE ELEVACIÓN



ADJOINING SHEETS HOJAS ADYACENTES



BOUNDARIES LÍMITES



THIS MAP IS RED-LIGHT READABLE

LIMITED DISTRIBUTION: Distribution authorized to DoD. Release authorized to U.S. DoD contractors (NA 48 C.F.R. 1252.246-7000). Ref: other requests to Headquarters, NIMA, ATTN: Release Officer, Stop P-25, Destroy as 'For Official Use Only'. Removal of this caveat is prohibited.

USERS SHOULD REFER CORRECTIONS, ADDITIONS, AND COMMENTS TO THE MIA CUSTOMER HELP DESK: 1-800-455-0889, COMMERCIAL 1-304-200-1238, CON 480-1238. OR WRITE TO: ATTN: CDD, MAIL STOP P-37, NATIONAL MAPPING AND MAPPING AGENCY, 4600 SANGAMORE ROAD, BETHESDA, MD 20815-5003

NSN 7643014018057 EDITION 2-DMA SHEET 2357 I SERIE E753