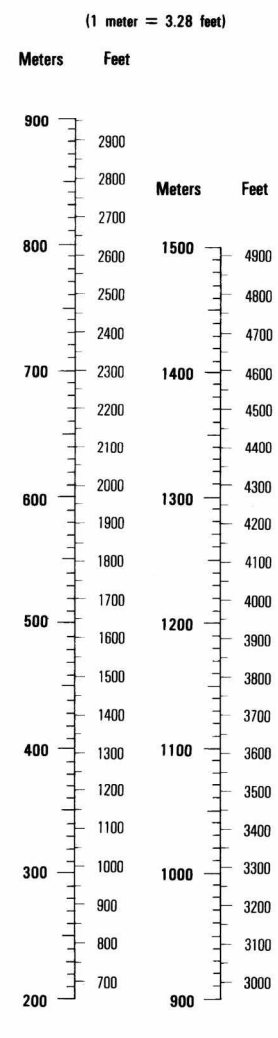
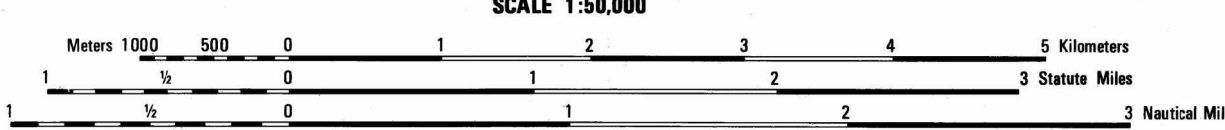


CONVERSION GRAPH



NOTES

ON THIS MAP A LANE IS GENERALLY CONSIDERED AS BEING 8-12 FEET (2.5-3.8 METERS) WIDE. EN ESTE MAPA UNA LANA TIENE GENERALMENTE UNA ANCHURA DE 8-12 PIES (2.5-3.8 METROS).



ELEVATIONS IN METERS

CONTOUR INTERVAL 20 METERS INTERVALO DE CURVAS 20 METROS

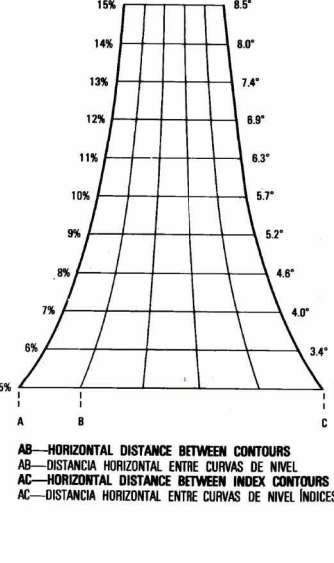
SPHEROID CLARKE 1886 1,000 METER UTM ZONE 18 (BLACK NUMBERED LINES) CLARKE 1886 1,000 METER UTM ZONE 18 (BLACK NUMBERED LINES) CLARKE 1886 1,000 METER UTM ZONE 18 (BLACK NUMBERED LINES) CLARKE 1886 1,000 METER UTM ZONE 18 (BLACK NUMBERED LINES)

100 METER REFERENCE. 1. Read large numbers labeling the VERTICAL grid lines... 100,000 METER SQUARE IDENTIFICATION. GRID ZONE DESIGNATION.

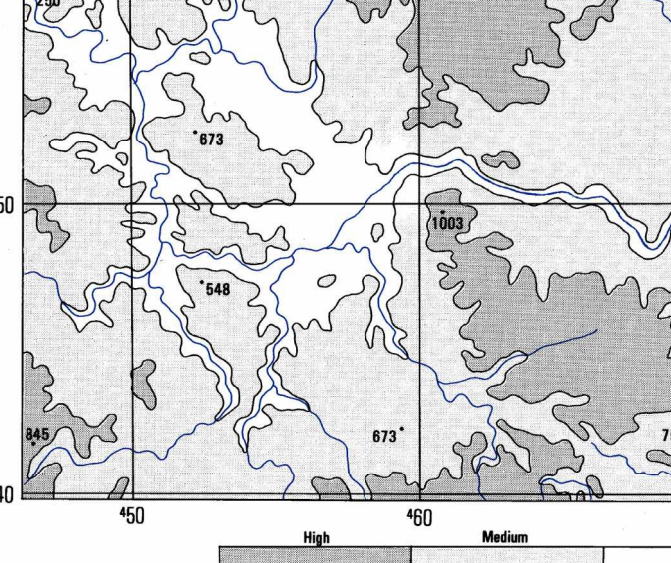
GRID CONVERSION

CONVERSION OF GRID COORDINATES TO MAGNETIC AZIMUTH. TO CONVERT A MAGNETIC AZIMUTH TO A GRID AZIMUTH...

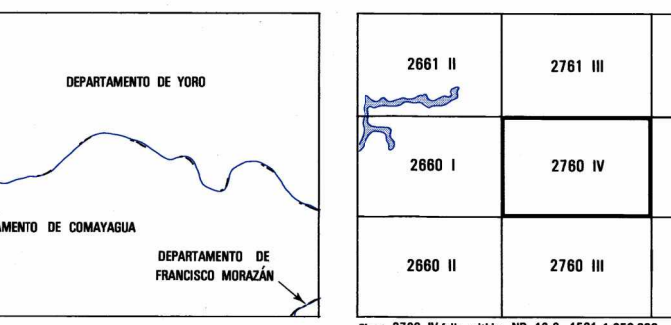
SLOPE GUIDE



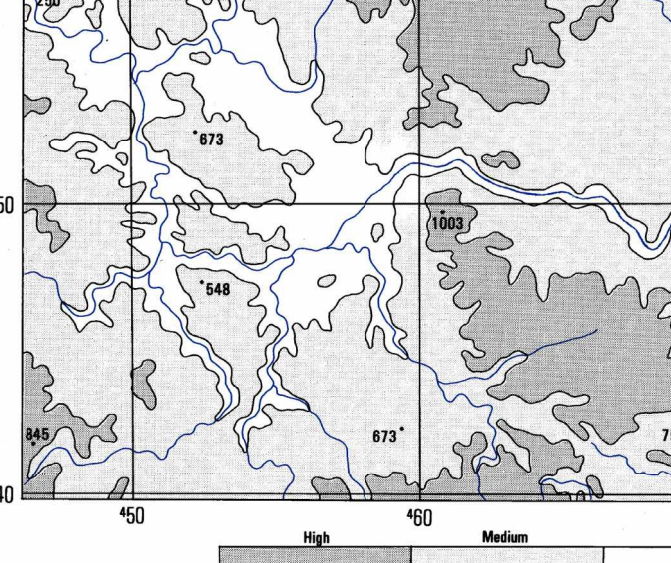
ELEVATION GUIDE



BOUNDARIES



ADJOINING SHEETS



Prepared and published by the Defense Mapping Agency Hydrographic/Topographic Center, Washington, D.C. REVISÉ EN 1986 FROM BEST AVAILABLE SOURCES.

LEGEND SIGNOS CONVENCIONALES. ROADS: Dual highway, All weather, hard surface. RAILROADS: Single track, Double track. STREAMS: Perennial, Intermittent.