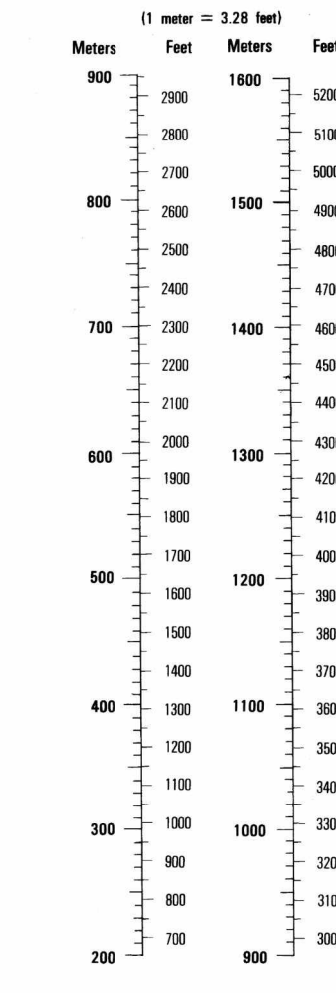


CONVERSION GRAPH



Prepared jointly by the Instituto Geográfico Nacional (IGN) and the Defense Mapping Agency Hydrographic/Topographic Center.

LEGEND

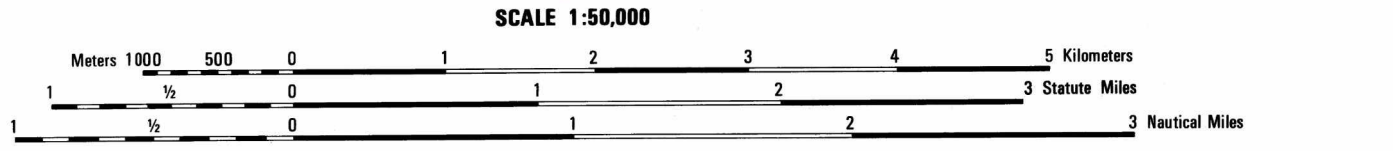
- ROADS: All weather, hard surface; All weather, loose or light surface; etc.
RAILROADS: Broad gauge; Normal gauge; Narrow gauge; etc.
STREAMS: River; Brook; Stream; etc.
BOUNDARIES: International; National; etc.

NOTES

ON THIS MAP A LINE IS GENERALLY CONSIDERED AS BEING 8-12 FEET (2.5-3.8 METERS) WIDE.
IN DEVELOPED AREAS ONLY THROUGH ROADS ARE SHOWN.

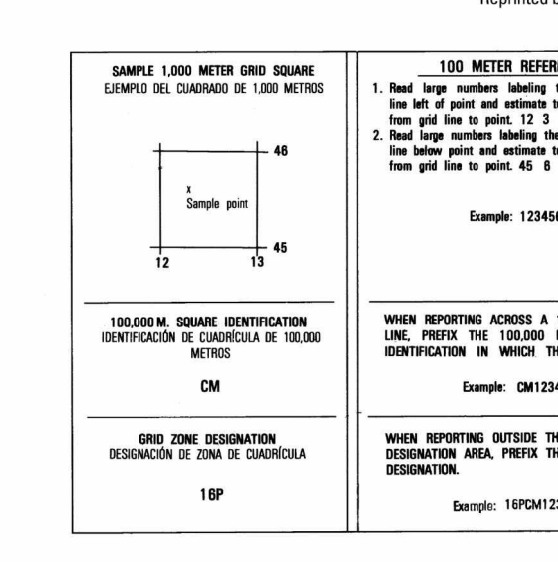
GLOSSARY

- Alin approx: approximate alignment; Antimono: antimony; Balneario: bathhouse; etc.



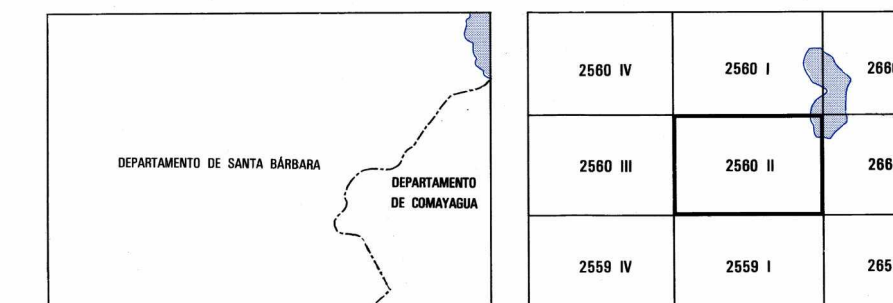
ELEVATIONS IN METERS

CONTOUR INTERVAL 20 METERS
INTERVALO DE CURVAS 20 METROS
SPHEROID GRID: 1,000 METER UTM ZONE 16 (BLACK NUMBERED LINES); etc.

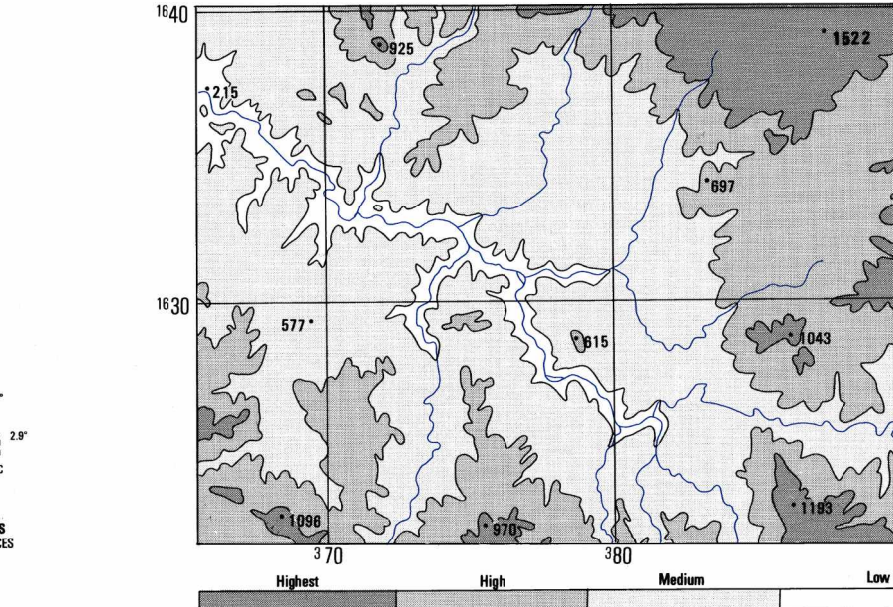


100 METER REFERENCE: How to report across a 100-meter line; How to report outside the grid zone.
WHEN REPORTING ACROSS A 100-METER LINE: PREFIX THE 100,000 METER SQUARE IDENTIFICATION BY WHICH THE POINT LIES.

BOUNDARIES



ADJOINING SHEETS



ELEVATION GUIDE

