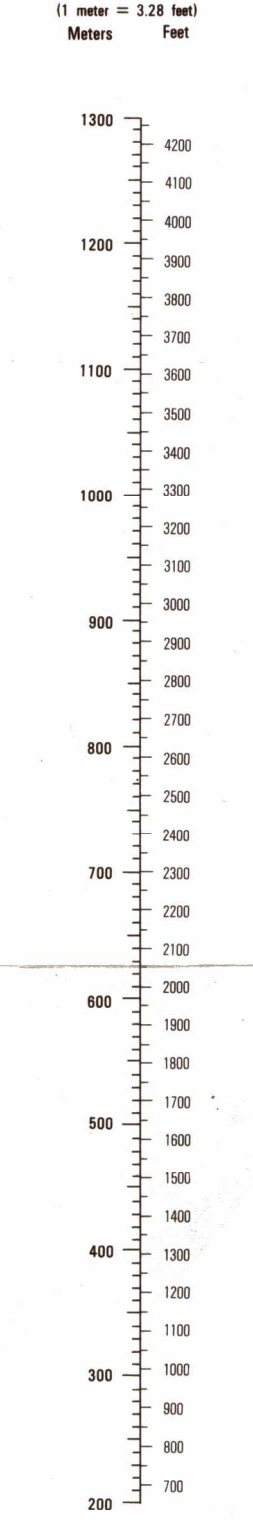
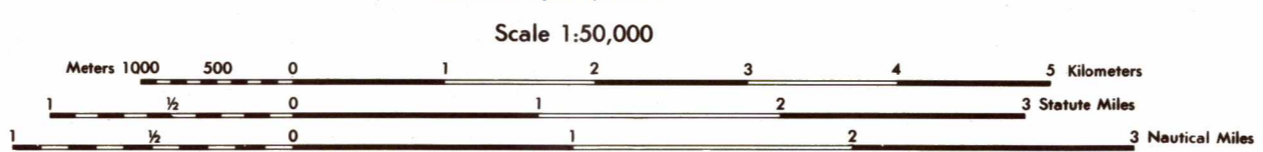


CONVERSION GRAPH GRÁFICO DE CONVERSIÓN



Prepared and published by the Defense Mapping Agency Hydrographic/Topographic Center, Washington, D.C. COMPILED IN 1986 FROM BEST AVAILABLE SOURCE MATERIALS REACCIÓN CARTOGRÁFICA HECHA EN 1986 DE LAS MEJORES FUENTES DISPONIBLES.



ELEVATIONS IN METERS

Table with 2 columns: CONTOUR INTERVAL 20 METERS and INTERVALO DE CURVAS 20 METROS. It lists various datum and projection options for elevation measurements.

GLOSSARY GLOSARIO

Table listing various geographical features and their symbols in both English and Spanish. Includes terms like 'Canal', 'Cerro', 'Cueva', 'Lago', etc.

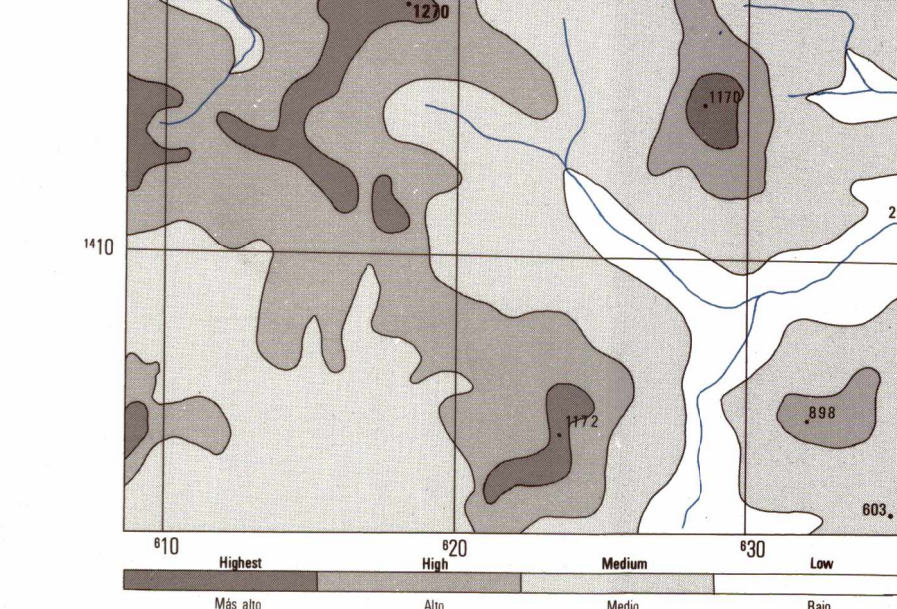
THIS MAP IS RED-LIGHT READABLE

LIMITED DISTRIBUTION. Distribution authorized to DoD, only by USCS 95320 & 455. Release authorized to U.S. GAO contractors, only by USCS 95322-240-2000. Make other requests to Headquarters, NIMA, ATTN: Release Officer, Stop P-25, Dayton, OH 45460-1000.

BOUNDARIES LÍMITES

Table showing adjacent sheets (hojas adyacentes) with grid coordinates. Includes sheets 2954 I, II, III, IV and 3053 I, II, III, IV.

ELEVATION GUIDE GUÍA DE ELEVACIÓN



NOTES NOTAS. IN DEVELOPED AREAS ONLY THROUGH ROADS ARE CLASSIFIED. EN LAS ÁREAS DESARROLLADAS, SOLAMENTE SE CLASIFICAN LAS VÍAS DIRECTAS. A LANE ON THIS MAP IS CONSIDERED TO BE 2.5 METERS WIDE. EN ESTE MAPA SE CONSIDERA QUE UNA VÍA TIENE 2.5 METROS DE ANCHURA. CAUTION: NOT ALL TELEPHONE AND ELECTRIC SERVICE LINES ARE SHOWN. ADVERTENCIA: NO SE MUESTRAN TODAS LAS LÍNEAS TELEFÓNICAS NI TODAS LAS LÍNEAS DE SERVICIO ELÉCTRICAS.

LEGEND. Table listing symbols for roads, railroads, bridges, and other features in both English and Spanish.

TO CONVERT A MAGNETIC AZIMUTH TO A GRID AZIMUTH ADD 0-M ANGLE. PARA CONVERTIR UN ACIMUT MAGNÉTICO A UN ACIMUT DE CUADRICULA SUMESE EL ÁNGULO C-M.

