

Prepared and published by the Defense Mapping Agency Hydrographic/Topographic Center, Washington, D.C.

REVISED IN 1984 FROM BEST AVAILABLE SOURCE

REVISADO EN 1984 DE LAS MEJORES DISPONIBLES FUENTE

LEGEND

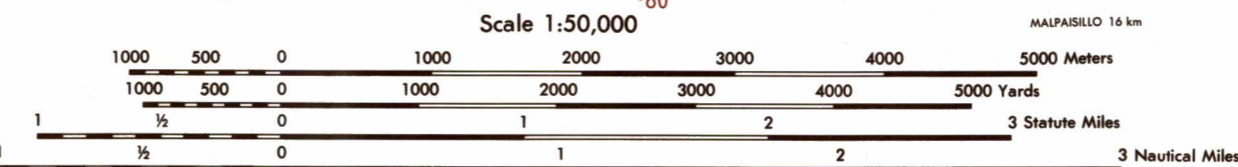
- ROADS: Divided highway, All weather, hard surface, two or more lanes wide, etc.

SIGNOS CONVENCIONALES

- WINDMILL, windpump, Water mill, Tank, landmark object, Horizontal control point, etc.

GLOSSARY GLOSARIO

- Abandoned: Abandoned, Acacia, Agua, Campo de Juego, Cafetal, Cem., Cerros, etc.



CONTOUR INTERVAL 20 METERS INTERVALO DE CURVAS 20 METROS

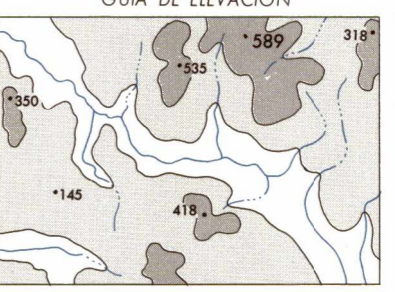
SPHEROID: CLARKE 1866, TRANSVERSA DE MERCATOR, etc.

PROJECTION: MEAN SEA LEVEL DATUM, HORIZONTAL DATUM, etc.

PRINTED BY NIMA 11-98

100 METER REFERENCE: 1. Read large numbers labeling the VERTICAL grid line left of point and estimate tenths (100 meters) from grid line to point. 12 3. 2. Read large numbers labeling the HORIZONTAL grid line below point and estimate tenths (100 meters) from grid line to point. 4 5 6. Example: 123456

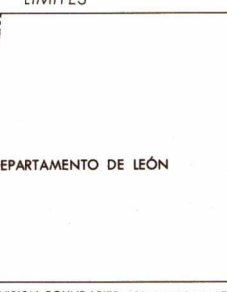
ELEVATION GUIDE GUÍA DE ELEVACIÓN



ADJOINING SHEETS HOJAS ADYACENTES

Table with 4 columns and 3 rows showing adjacent sheet numbers: 2854 IV, 2854 I, 2854 III, 2854 II, 2853 I, 2853 II, 2853 III, 2853 IV.

BOUNDARIES LÍMITES



THIS MAP IS RED-LIGHT READABLE

LIMITED DISTRIBUTION: Distribution authorized to DOD, IAW 10 USC 5030 & 405. Release authorized to U.S. DOD contractors, IAW 48 CFR (52) 245-200. Refer other requests to Headquarters, NIMA, ATTN: Release Officer, Stop P-25, Derryville, VA 22042-4302.

NSN 7643014017624 E751X28542