

Table with two columns: 'DATO HIDROGRAFICO' and 'HYDROGRAPHIC DATUM'. It lists various hydrographic symbols and their corresponding datum names, such as 'Curvas batimétricas y Sondeos en metros' and 'Depth curves and Soundings in meters'.

Prepared by the Instituto Cartográfico Militar (ICM), Santo Domingo, Dominican Republic, in collaboration with the National Imagery and Mapping Agency (NIMA).
Prepared by the Instituto Cartográfico Militar (ICM), Santo Domingo, Dominican Republic, in collaboration with the National Imagery and Mapping Agency (NIMA).

CAUTION: NOT ALL TELEPHONE AND ELECTRIC SERVICE LINES ARE SHOWN. ADVERTENCIA: NO SE INDICA TODAS LAS LINEAS TELEFÓNICAS Y ELÉCTRICAS.

THE WIDTH OF A LANE ON THIS MAP IS CONSIDERED TO BE AT LEAST 2.5 METERS. ANCHO EN ESTE MAPA SE CONSIDERA CON UN MÍNIMO DE 2.5 METROS DE ANCHO.

IN BUILT-UP AREAS ONLY THROUGH ROUTES ARE CLASSIFIED. EN ÁREAS DESARROLLADAS SOLAMENTE SE CLASIFICA LAS RUTAS TRONCALES.

NORTH AMERICAN DATUM 1983 (NAD 83) AND WORLD GEODETIC SYSTEM 1984 (WGS 84) ARE EQUIVALENT FOR MAPPING, CHARTING AND NAVIGATION AT THIS SCALE. EL DATUM NORTEAMERICANO DE 1983 (NAD 83) Y EL SISTEMA GEODÉSICO MUNDIAL 1984 (WGS 84) SON EQUIVALENTES PARA LA ELABORACIÓN DE CARTAS, MAPAS Y NAVEGACIÓN PARA ESTE ESCALA.

GLOSSARY GLOSARIO

Table listing various geographical features and their corresponding symbols in both Spanish and English. Examples include 'Agua' (water), 'Antena' (antenna), 'Área de cable' (cable area), 'Arenas' (sand), 'Brisa' (breeze), 'Coco' (coconut), 'Concha' (shell), 'Complejo comercial y habitacional' (residential and commercial complex), 'Corral' (corral), 'Estación de bombeo' (water pump), 'Estación de transformadores eléctricos' (transformer station), 'Hormigones' (concrete), 'Hotel' (hotel), 'Océano' (ocean), 'Provincia' (province), 'Sabana' (savanna), and 'Vivero' (nursery).

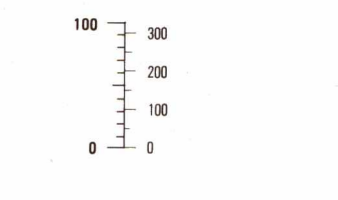
ELEVATIONS IN METERS ELEVACIONES EN METROS

CONTOUR INTERVAL 20 METERS INTERVALO DE CURVAS 20 METROS

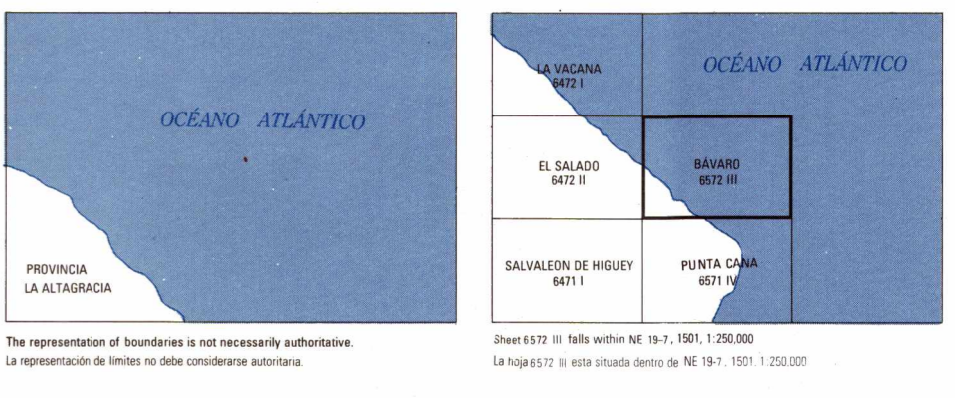
GRID, HORIZONTAL DATUM 1,000 METER UTM ZONE 19. GEODETIC REFERENCE SYSTEM 1980/WORLD GEODETIC SYSTEM 1984 ELLIPSOID, NORTH AMERICAN DATUM 1983/SISTEMA GEODÉSICO MUNDIAL 1984 (BLACK NUMBERED LINES). PROYECCION TRANSVERSA MERCATOR DATUM VERTICAL MEAN SEA LEVEL CLASIFICACION DE CAMPO FIELD CLASSIFICATION NIMA 09-01

Table explaining the grid system and datum used on the map. It includes information about the 1,000-meter UTM grid, the 1980/1984 Geodetic Reference System, and the Transverse Mercator projection. It also provides instructions on how to use the grid and datum for mapping and navigation.

CONVERSION GRAPH GRÁFICO DE CONVERSIÓN



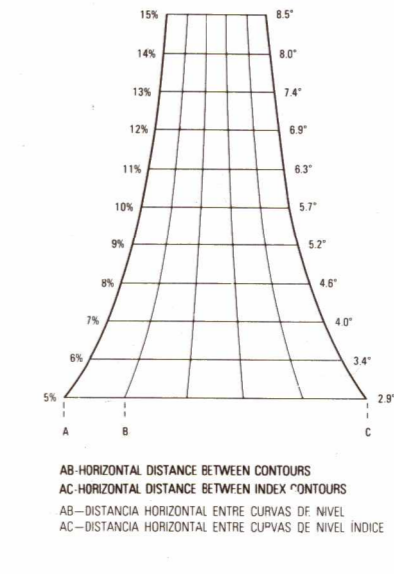
BOUNDARIES LIMITES ADJOINING SHEETS HOJAS ADYACENTES



LIMITED DISTRIBUTION Distribution authorized to DOD, IAW 10 U.S.C. (50) & 455. Release authorized to U.S. Civilian, IAW 48 C.F.R. 5025-26-7000. Note other requests to Headquarters, NIMA, ATTN: Release Office, Step 7-25, Drenth Ave., Fort Belvoir, IL. Removal of this caveat is prohibited.

THIS MAP IS RED-LIGHT READABLE ESTE MAPA ES LEGIBLE BAJO LUZ ROJA. COORDINATE CONVERSION NAD 83/WGS 84 TO NAD 27 Grid: No change in the Easting; subtract 200m N. Geographic: No change in the Long.; subtract 3.3" from Lat. CONVERSIÓN DE COORDINADAS NAD 83/WGS 84 A NAD 27 Cuadrícula: Cero cambio en Long.; resta 3.3" de Lat. Geográfica: No cambio en Long.; resta 3.3" de Lat.

SLOPE GUIDE GRADO DE PENDIENTE



ELEVATION GUIDE GUÍA DE ELEVACIÓN

