

Prepared by the Instituto Cartografico Militar (ICM) Santo Domingo, Dominican Republic, in collaboration with the Defense Mapping Agency Inter American Geodesic Survey.

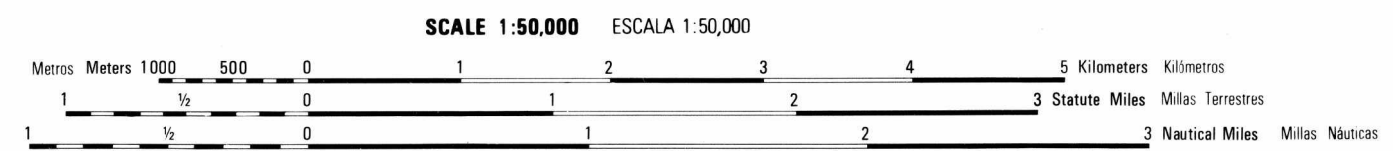


Preparado por el Instituto Cartografico Militar (ICM), Santo Domingo, Republica Dominicana, con la colaboración de la Agencia Cartografica de Defensa Servicio Geodesico Interamericano.

Map updated with photo-planimetric methods from aerial photography taken in March 1986. Map field checked in April 1988.

Mapa actualizado con metodos fotoplanimetricos con fotografias aereas tomadas en Marzo 1986. Comprobacion de campo en Abril 1988.

NOTES NOTES IN BUILT-UP AREAS ONLY THROUGH ROUTES ARE CLASSIFIED EN AREAS DESARROLLADAS SOLAMENTE SE CLASIFICAN LAS RUTAS TRONCALES THE WIDTH OF A LANE ON THIS MAP IS CONSIDERED TO BE AT LEAST 2.5 METERS WIDE. UNA VIA EN ESTE MAPA SE CONSIDERA COMO UN MINIMO DE 2.5 METROS DE ANCHO CAUTION: NOT ALL TELEPHONE AND ELECTRIC SERVICE LINES ARE SHOWN. ADVERTENCIA: NO TODAS LAS LINEAS TELEFONICAS Y ELECTRICAS SE MUESTRAN.



ELEVATIONS IN METERS ELEVACIONES EN METROS

CONTOUR INTERVAL 20 METERS SUPPLEMENTARY CONTOURS 10 METERS INTERVALO DE CURVAS 20 METROS CURVAS SUPLEMENTARIAS CADA 10 METROS

Table with 4 columns: SPHEROID, GRID, PROJECTION, HORIZONTAL DATUM, FIELD CLASSIFICATION, ESTERIOIDE, CUADRICULA, PROYECCION, DATO HORIZONTAL, CLASIFICACION DE CAMPO. Includes grid square identification instructions.

GLOSSARY GLOSARIO

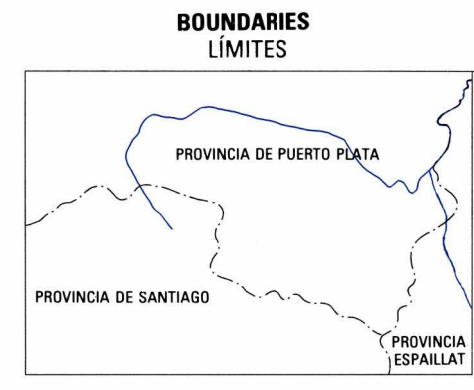
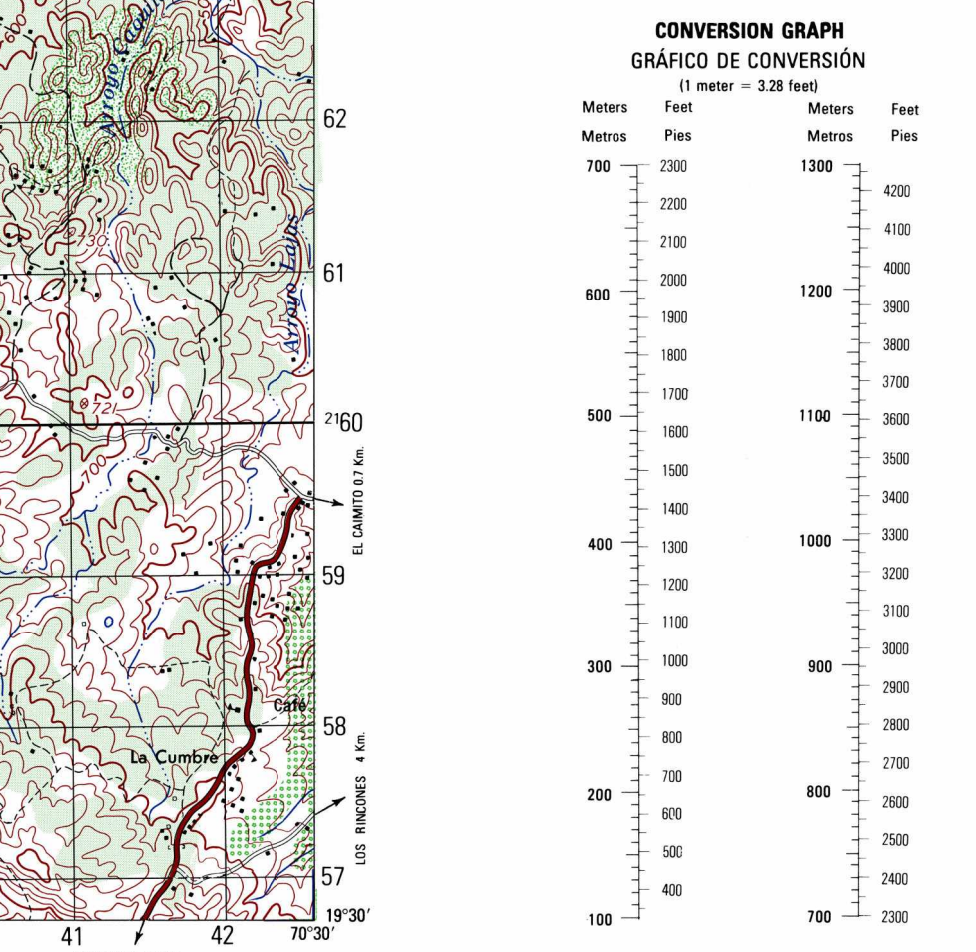
Table listing various geographical features and their Spanish/English names: Antena, Aproximado, Arroyo, Canal, etc.

LEGEND CONVENIONES

Table listing symbols for roads, railways, populated places, boundaries, and other features.

CONVENIONES

Table listing symbols for canyons, drainage, and other features.



ADJOINING SHEETS (HOJAS ADYACENTES) table showing grid coordinates for adjacent sheets: 6075 III, 6075 II, 6175 III, 6074 IV, 6074 I, 6174 IV, 6074 III, 6074 II, 6174 III.

