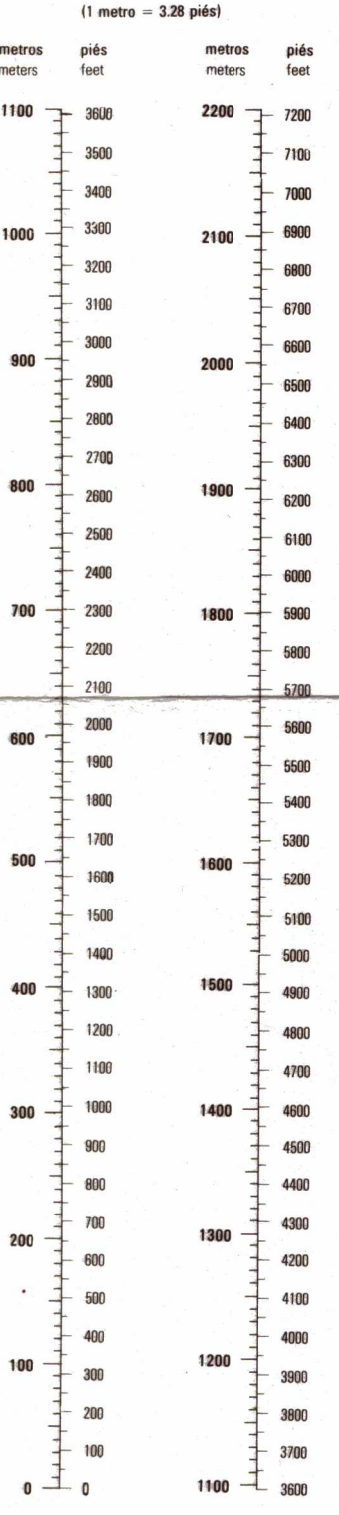


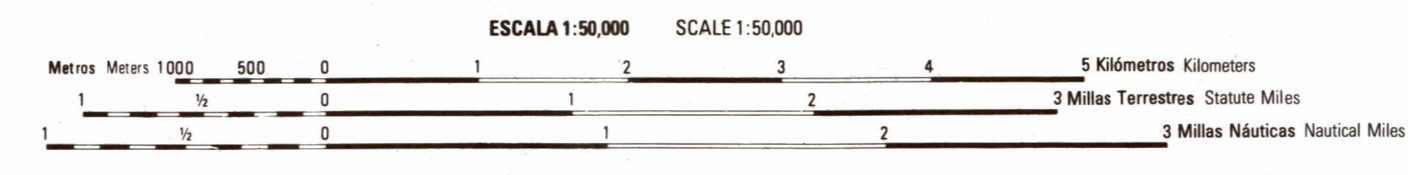


GRÁFICO DE CONVERSIÓN CONVERSION GRAPH



Prepared por el Instituto Cartográfico Militar (ICM), Santo Domingo, República Dominicana, con la colaboración de la Agencia Cartográfica de Defensa.

Mapa actualizado con métodos fotoplanimétricos con fotografías aéreas tomadas en Marzo 1984. Comprobación de campo en Abril 1988.



ELEVACIONES EN METROS ELEVATIONS IN METERS

INTERVALO DE CURVAS 20 METROS CURVAS SUPLEMENTARIAS CADA 10 METROS

CONTOUR INTERVAL 20 METERS SUPPLEMENTARY CONTOURS 10 METERS

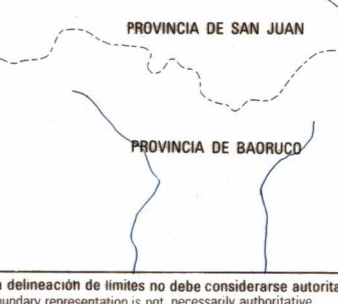
CUADRICULA 1000 METROS DE LA CUADRICULA UTM, ZONA 19, ELIPSOIDE CLARKE 1866 (LÍNEAS NUMERADAS EN NEGRO) 1000 METERS OF THE QUADRICULA UTM, ZONE 19, TRANSVERSE MERCATOR SYSTEM 1983 (BLACK NUMBERED LINES)

Technical diagrams and instructions for using the map's grid and elevation data, including a 100-meter grid example and instructions for reading contours.

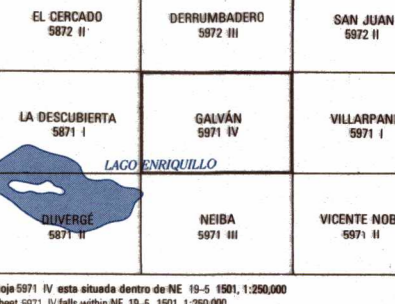
CONVERSIÓN DE COORDENADAS NAD 27 A NAD 83 Geográfico: Restar 15' de Longitud, Añadir 24" de Latitud.

COORDINATE CONVERSION NAD 27 TO NAD 83 Grid: Add 47m E, Add 198m N. Geographic: Subtract 15' Long, Add 24" Lat.

LÍMITES BOUNDARIES

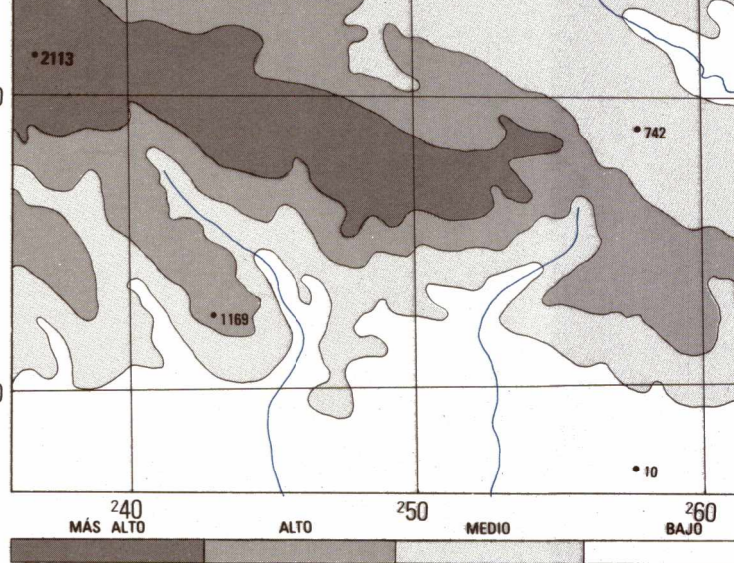


HOJAS ADYACENTES ADJOINING SHEETS

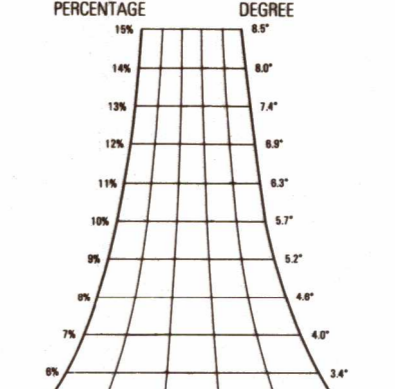


ESTE MAPA ES LEGIBLE BAJA LUZ ROJA THIS MAP IS RED-LIGHT READABLE

GUÍA DE ELEVACIÓN ELEVATION GUIDE



GUÍA DE PENDIENTE SLOPE GUIDE



LEYESA LEGEND table listing symbols for roads, railways, populated places, and other features.

LIMITED DISTRIBUTION Distribution restricted to U.S. NAVY 16 USC 1533 & 405. Information authorized to U.S. Dept. Commerce, 15 USC 48 (CFR, 48 CFR 243.243-2000). Also see restrictions in Handbook, NIMA, 4117. Release Office, Stop 712, Dayton in "For Official Use Only." Release of this content is prohibited.

GLOSARIO GLOSSARY

Glossary table listing terms and their approximate or exact equivalents in Spanish and English.