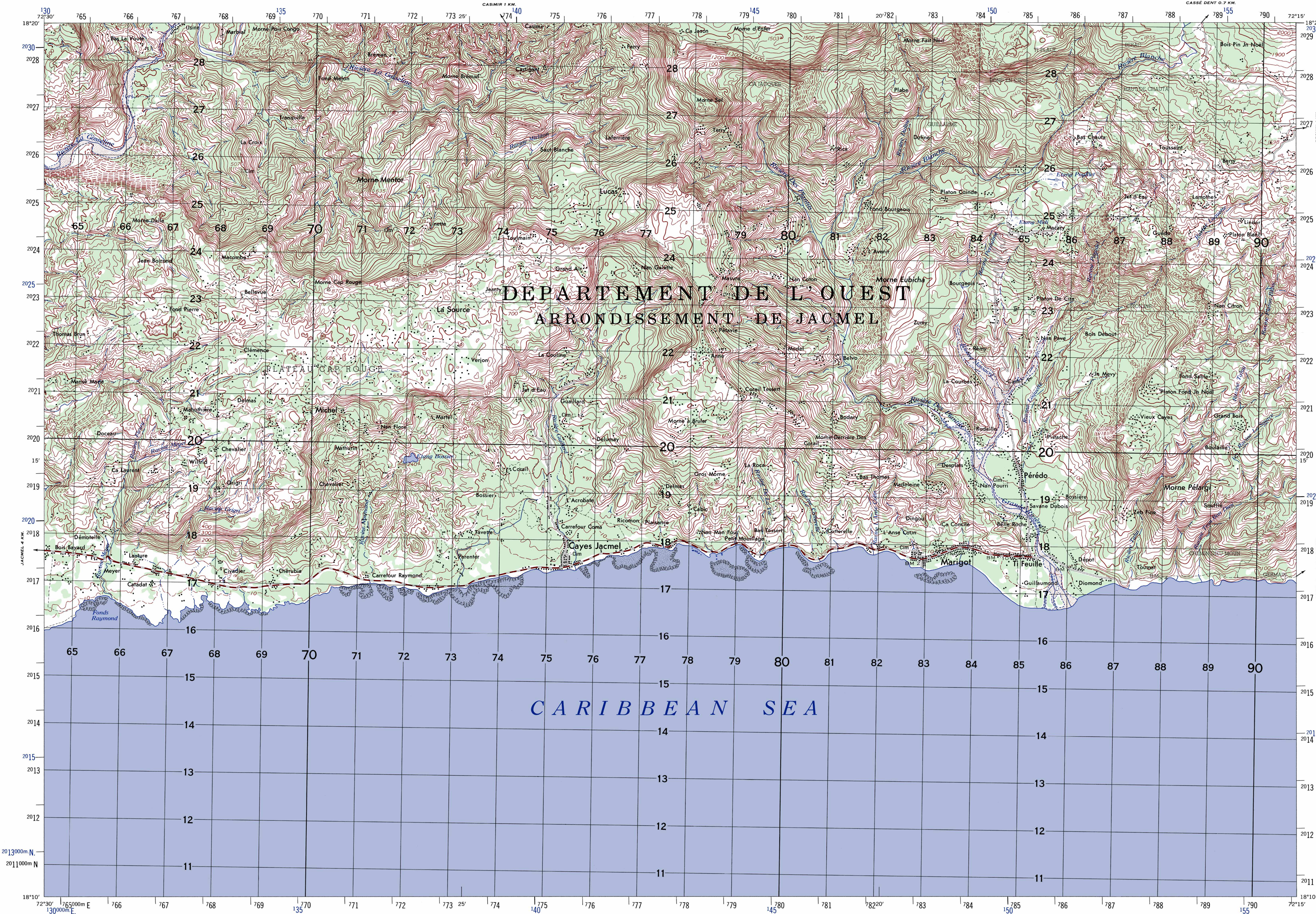


HAITI 1:50,000

# MARIGOT

EDITION 2-AMS  
SECONDE ÉDITION-AMS

REFER TO THIS MAP AS:  
SHEET 5770 IV  
SERIES E732



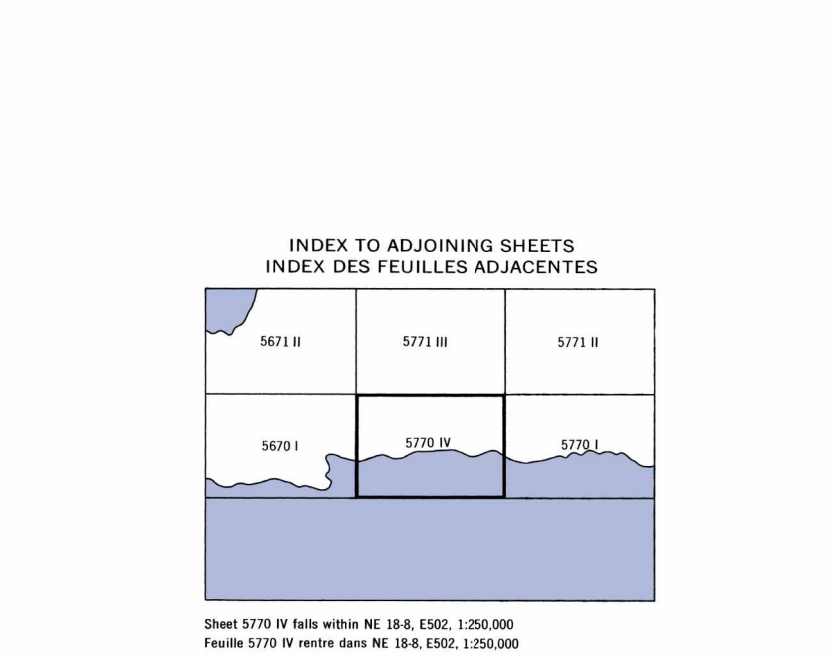
**LEGEND**  
LEGENDE

In developed areas, only through roads are classified  
Dans les zones d'agglomérations les grandes routes seulement sont classifiées

ROADS	ROUTES
All weather, hard surface, two or more lanes wide	Surface dure, deux voies ou plus, utilisable en tout temps
All weather, loose or light surface, two or more lanes wide	Gravier nivelé ou terre, deux voies ou plus, utilisable en tout temps
All weather, hard surface, one lane wide	Surface dure, une voie, utilisable en tout temps
All weather, loose or light surface, one lane wide	Gravier nivelé ou terre, une voie, utilisable en tout temps
Fair or dry weather, loose surface	Route de terre, utilisable en temps secs
Cart track (separable)	Sentier important (voiturable en "jeep")
Footpath, trail	Piste ou sentier
RAILROADS	VOIES FERRÉES
Normal gauge, single track	Voie normale, une voie
Normal gauge, double track	Voie normale, deux voies
Narrow gauge, single track	Voie étroite, une voie
Narrow gauge, double track	Voie étroite, deux voies
International boundary	Frontière internationale
Built-up area	Centre urbain
Church, School, Located object	Église; École; Objet localisé
Horizontal control point; Bench mark, monumental	Point de contrôle horizontal; Repère de nivellement
Spot elevation in meters; Checked; Unchecked	Élévation d'un point en mètres; Vérifié; Non-vérifié
Mine: Open pit; Horizontal shaft	Mine ouverte ou carrière; Mine souterraine
Woods or brushwood; Plantation	Bois ou broussailles; Plantation
Marsh; Rice paddies	Marais; Riz
Mangrove	Manglier
Salt evaporators	Saline
Intermittent pond or lake	Lac ou étang intermittent
Land subject to inundation	Terrain sujet à inondation
Canal, aqueduct	Canal, aqueduc
Area name	Nom de aire
Intermittent river	Rivière intermittente
Falls	Chute
Rapids	Rapides
Dam	Barrage
Wharf	Quai
Revetment	Digue
Sunken rocks, dangerous to navigation	Rocher sous-marin, dangereux pour la navigation
Rocks weak at low tide, dangerous to navigation	Rocher émergent à marée basse, dangereux pour la navigation
Submerged reef; Reef	Récif submergé; Récif
Foreshore flats	Plage plate
Wreck: Exposed; Sunken, dangerous to navigation	Épave exposée; Épave cachée, dangereux pour la navigation

**GLOSSARY**  
GLOSSAIRE

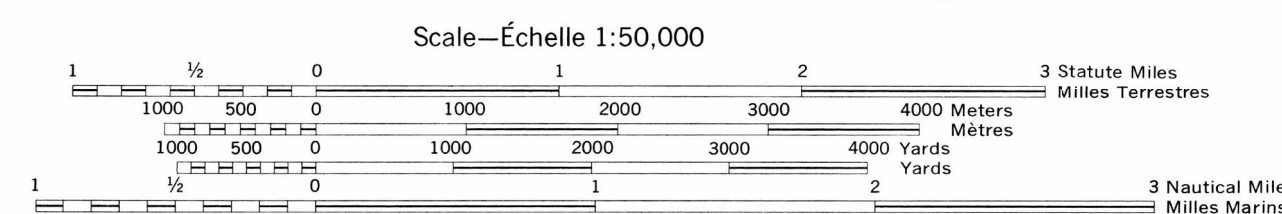
Arrondissement	district
Cimetière, Cim	cemetery
Département	department
Étang	pond, pool
Fond	river mouth
Marne	hill
Ravine	gully, ravine
Rivière	river
Usine	factory, mill



E732  
Edition 2-AMS, First Printing  
Seconde Édition-AMS, Premier Tirage

Prepared by the Army Map Service (SX), Corps of Engineers, U.S. Army, Washington, D.C. Compiled in 1962 from Haiti, 1:25,000, Service de Géodésie et des Forces Armées d'Haiti, Sheets 5770 IV NE, NW, SE and SW, 1956. Original mapping by photogrammetric methods from 1956 aerial photography. Horizontal and vertical control by the Service de Géodésie et de Cartographie in cooperation with the Inter American Geodetic Survey. This map complies with the national standard map accuracy requirements.

Dressée par l'Army Map Service (SX), Corps of Engineers, U.S. Army, Washington, D.C. Compilée en 1962, de Haïti, 1:25,000, Service de Géodésie et des Forces Armées d'Haïti, feuilles 5770 IV NE, NW, SE and SW, 1956. Carte originale d'après les méthodes photogrammétriques de 1956 vues aériennes. Contrôle horizontal et vertical par le Service de Géodésie et de Cartographie en coopération de l'Inter American Geodetic Survey. La précision est conforme aux tolérances admises par les règlements nationaux.



CONTOUR INTERVAL 20 METERS  
WITH SUPPLEMENTARY CONTOURS AT 10 METER INTERVALS  
INTERVALLE DES COURBES 20 MÈTRES  
INTERVALLE DES COURBES SUPPLÉMENTAIRES 10 MÈTRES

VERTICAL DATUM: MEAN SEA LEVEL  
DONNÉES VERTICALES: LE NIVEAU MOYEN DES MERS

TRANSVERSE MERCATOR PROJECTION  
PROJECTION TRANSVERSALE DE MERCATOR

HORIZONTAL DATUM: 1927 NORTH AMERICAN DATUM  
DONNÉES HORIZONTALES: "NORTH AMERICAN DATUM OF 1927"

BLACK NUMBERED LINES INDICATE THE 1,000 METER UNIVERSAL TRANSVERSE MERCATOR GRID, ZONE 18, CLARKE 1866 SPHEROID  
LES LIGNES CHIFFRÉES EN NOIR CORRESPONDENT AU QUADRILLAGE KILOMÉTRIQUE UTM, ZONE 18, SPHÉROÏDE DE CLARKE 1866

BLUE NUMBERED TICKS OUTSIDE THE NEATLINE INDICATE THE 1,000 METER UNIVERSAL TRANSVERSE MERCATOR GRID, ZONE 19, CLARKE 1866 SPHEROID  
LES ANCHES CHIFFRÉES EN BLEU À L'EXTÉRIEUR DU CADRE CORRESPONDENT AU QUADRILLAGE KILOMÉTRIQUE UTM, ZONE 19, SPHÉROÏDE DE CLARKE 1866

THE LAST THREE DIGITS OF THE GRID NUMBERS ARE OMITTED  
LES TROIS DERNIERS CHIFFRES DES COORDONNÉES ONT ÉTÉ OUBLIÉS

USERS SHOULD REFER CORRECTIONS, ADDITIONS, AND COMMENTS TO THE NGA OPERATIONAL HELP DESK: 1-800-452-8896, COMMERCIAL 314-325-4884, DSN 680-4884, OR WRITE TO: DIRECTOR, NATIONAL GEOSPATIAL-INTELLIGENCE AGENCY, ATTN: ES, MAIL STOP L-86, 8000 SANGAMORE ROAD, BETHESDA, MD 20818-5002.

Scale—Échelle 1:50,000

1 1/2 0 1 2 3 Statute Miles  
1000 500 0 1000 2000 3000 4000 Meters  
1000 500 0 1000 2000 3000 4000 Yards  
1 1/2 0 1 2 3 Nautical Miles

TO CONVERT A MAGNETIC AZIMUTH TO A GRID AZIMUTH  
SUBTRACT G-M ANGLE

POUR CONVERTIR L'AZIMUT MAGNÉTIQUE EN AZIMUT DE QUADRILLAGE  
SOUSTRAIRE L'ANGLE G-M

TO CONVERT A GRID AZIMUTH TO A MAGNETIC AZIMUTH  
ADD G-M ANGLE

POUR CONVERTIR L'AZIMUT DE QUADRILLAGE EN AZIMUT MAGNÉTIQUE  
AJOUTER L'ANGLE G-M

1960 G-M ANGLE OF 0-9 4° (70 MILS, MILL)

1960 G-M ANGLE OF 0-9 2° (40 MILS, MILL)

1960 G-M ANGLE OF 0-9 1° (20 MILS, MILL)

1960 G-M ANGLE OF 0-9 0° (0 MILS, MILL)

1960 G-M ANGLE OF 0-9 1° (20 MILS, MILL)

1960 G-M ANGLE OF 0-9 2° (40 MILS, MILL)

1960 G-M ANGLE OF 0-9 4° (70 MILS, MILL)

1960 G-M ANGLE OF 0-9 9° (160 MILS, MILL)

1960 G-M ANGLE OF 0-9 18° (320 MILS, MILL)

1960 G-M ANGLE OF 0-9 27° (480 MILS, MILL)

1960 G-M ANGLE OF 0-9 36° (640 MILS, MILL)

1960 G-M ANGLE OF 0-9 45° (800 MILS, MILL)

1960 G-M ANGLE OF 0-9 54° (960 MILS, MILL)

1960 G-M ANGLE OF 0-9 63° (1120 MILS, MILL)

1960 G-M ANGLE OF 0-9 72° (1280 MILS, MILL)

1960 G-M ANGLE OF 0-9 81° (1440 MILS, MILL)

1960 G-M ANGLE OF 0-9 90° (1600 MILS, MILL)

1960 G-M ANGLE OF 0-9 99° (1760 MILS, MILL)

1960 G-M ANGLE OF 0-9 108° (1920 MILS, MILL)

1960 G-M ANGLE OF 0-9 117° (2080 MILS, MILL)

1960 G-M ANGLE OF 0-9 126° (2240 MILS, MILL)

1960 G-M ANGLE OF 0-9 135° (2400 MILS, MILL)

1960 G-M ANGLE OF 0-9 144° (2560 MILS, MILL)

1960 G-M ANGLE OF 0-9 153° (2720 MILS, MILL)

1960 G-M ANGLE OF 0-9 162° (2880 MILS, MILL)

1960 G-M ANGLE OF 0-9 171° (3040 MILS, MILL)

1960 G-M ANGLE OF 0-9 180° (3200 MILS, MILL)

1960 G-M ANGLE OF 0-9 189° (3360 MILS, MILL)

1960 G-M ANGLE OF 0-9 198° (3520 MILS, MILL)

1960 G-M ANGLE OF 0-9 207° (3680 MILS, MILL)

1960 G-M ANGLE OF 0-9 216° (3840 MILS, MILL)

1960 G-M ANGLE OF 0-9 225° (4000 MILS, MILL)

1960 G-M ANGLE OF 0-9 234° (4160 MILS, MILL)

1960 G-M ANGLE OF 0-9 243° (4320 MILS, MILL)

1960 G-M ANGLE OF 0-9 252° (4480 MILS, MILL)

1960 G-M ANGLE OF 0-9 261° (4640 MILS, MILL)

1960 G-M ANGLE OF 0-9 270° (4800 MILS, MILL)

1960 G-M ANGLE OF 0-9 279° (4960 MILS, MILL)

1960 G-M ANGLE OF 0-9 288° (5120 MILS, MILL)

1960 G-M ANGLE OF 0-9 297° (5280 MILS, MILL)

1960 G-M ANGLE OF 0-9 306° (5440 MILS, MILL)

1960 G-M ANGLE OF 0-9 315° (5600 MILS, MILL)

1960 G-M ANGLE OF 0-9 324° (5760 MILS, MILL)

1960 G-M ANGLE OF 0-9 333° (5920 MILS, MILL)

1960 G-M ANGLE OF 0-9 342° (6080 MILS, MILL)

1960 G-M ANGLE OF 0-9 351° (6240 MILS, MILL)

1960 G-M ANGLE OF 0-9 360° (6400 MILS, MILL)

1960 G-M ANGLE OF 0-9 369° (6560 MILS, MILL)

1960 G-M ANGLE OF 0-9 378° (6720 MILS, MILL)

1960 G-M ANGLE OF 0-9 387° (6880 MILS, MILL)

1960 G-M ANGLE OF 0-9 396° (7040 MILS, MILL)

1960 G-M ANGLE OF 0-9 405° (7200 MILS, MILL)

1960 G-M ANGLE OF 0-9 414° (7360 MILS, MILL)

1960 G-M ANGLE OF 0-9 423° (7520 MILS, MILL)

1960 G-M ANGLE OF 0-9 432° (7680 MILS, MILL)

1960 G-M ANGLE OF 0-9 441° (7840 MILS, MILL)

1960 G-M ANGLE OF 0-9 450° (8000 MILS, MILL)

1960 G-M ANGLE OF 0-9 459° (8160 MILS, MILL)

1960 G-M ANGLE OF 0-9 468° (8320 MILS, MILL)

1960 G-M ANGLE OF 0-9 477° (8480 MILS, MILL)

1960 G-M ANGLE OF 0-9 486° (8640 MILS, MILL)

1960 G-M ANGLE OF 0-9 495° (8800 MILS, MILL)

1960 G-M ANGLE OF 0-9 504° (8960 MILS, MILL)

1960 G-M ANGLE OF 0-9 513° (9120 MILS, MILL)

1960 G-M ANGLE OF 0-9 522° (9280 MILS, MILL)

1960 G-M ANGLE OF 0-9 531° (9440 MILS, MILL)

1960 G-M ANGLE OF 0-9 540° (9600 MILS, MILL)

1960 G-M ANGLE OF 0-9 549° (9760 MILS, MILL)

1960 G-M ANGLE OF 0-9 558° (9920 MILS, MILL)

1960 G-M ANGLE OF 0-9 567° (10080 MILS, MILL)

1960 G-M ANGLE OF 0-9 576° (10240 MILS, MILL)

1960 G-M ANGLE OF 0-9 585° (10400 MILS, MILL)

1960 G-M ANGLE OF 0-9 594° (10560 MILS, MILL)

1960 G-M ANGLE OF 0-9 603° (10720 MILS, MILL)

1960 G-M ANGLE OF 0-9 612° (10880 MILS, MILL)

1960 G-M ANGLE OF 0-9 621° (11040 MILS, MILL)

1960 G-M ANGLE OF 0-9 630° (11200 MILS, MILL)

1960 G-M ANGLE OF 0-9 639° (11360 MILS, MILL)

1960 G-M ANGLE OF 0-9 648° (11520 MILS, MILL)

1960 G-M ANGLE OF 0-9 657° (11680 MILS, MILL)

1960 G-M ANGLE OF 0-9 666° (11840 MILS, MILL)

1960 G-M ANGLE OF 0-9 675° (12000 MILS, MILL)

1960 G-M ANGLE OF 0-9 684° (12160 MILS, MILL)

1960 G-M ANGLE OF 0-9 693° (12320 MILS, MILL)

1960 G-M ANGLE OF 0-9 702° (12480 MILS, MILL)

1960 G-M ANGLE OF 0-9 711° (12640 MILS, MILL)

1960 G-M ANGLE OF 0-9 720° (12800 MILS, MILL)

1960 G-M ANGLE OF 0-9 729° (12960 MILS, MILL)

1960 G-M ANGLE OF 0-9 738° (13120 MILS, MILL)

1960 G-M ANGLE OF 0-9 747° (13280 MILS, MILL)

1960 G-M ANGLE OF 0-9 756° (13440 MILS, MILL)

1960 G-M ANGLE OF 0-9 765° (13600 MILS, MILL)

1960 G-M ANGLE OF 0-9 774° (13760 MILS, MILL)

1960 G-M ANGLE OF 0-9 783° (13920 MILS, MILL)

1960 G-M ANGLE OF 0-9 792° (14080 MILS, MILL)

1960 G-M ANGLE OF 0-9 801° (14240 MILS, MILL)

1960 G-M ANGLE OF 0-9 810° (14400 MILS, MILL)

1960 G-M ANGLE OF 0-9 819° (14560 MILS, MILL)

1960 G-M ANGLE OF 0-9 828° (14720 MILS, MILL)

1960 G-M ANGLE OF 0-9 837° (14880 MILS, MILL)

1960 G-M ANGLE OF 0-9 846° (15040 MILS, MILL)

1960 G-M ANGLE OF 0-9 855° (15200 MILS, MILL)

1960 G-M ANGLE OF 0-9 864° (15360 MILS, MILL)

1960 G-M ANGLE OF 0-9 873° (15520 MILS, MILL)

1960 G-M ANGLE OF 0-9 882° (15680 MILS, MILL)

1960 G-M ANGLE OF 0-9 891° (15840 MILS, MILL)

1960 G-M ANGLE OF 0-9 900° (16000 MILS, MILL)

1960 G-M ANGLE OF 0-9 909° (16160 MILS, MILL)

1960 G-M ANGLE OF 0-9 918° (16320 MILS, MILL)

1960 G-M ANGLE OF 0-9 927° (16480 MILS, MILL)

1960 G-M ANGLE OF 0-9 936° (16640 MILS, MILL)

1960 G-M ANGLE OF 0-9 945° (16800 MILS, MILL)

1960 G-M ANGLE OF 0-9 954° (16960 MILS, MILL)

1960 G-M ANGLE OF 0-9 963° (17120 MILS, MILL)

1960 G-M ANGLE OF 0-9 972° (17280 MILS, MILL)

1960 G-M ANGLE OF 0-9 981° (17440 MILS, MILL)

1960 G-M ANGLE OF 0-9 990° (17600 MILS, MILL)

1960 G-M ANGLE OF 0-9 999° (17760 MILS, MILL)

1960 G-M ANGLE OF 0-9 1008° (17920 MILS, MILL)

1960 G-M ANGLE OF 0-9 1017° (18080 MILS, MILL)

1960 G-M ANGLE OF 0-9 1026° (18240 MILS, MILL)

1960 G-M ANGLE OF 0-9 1035° (18400 MILS, MILL)

1960 G-M ANGLE OF 0-9 1044° (18560 MILS, MILL)

1960 G-M ANGLE OF 0-9 1053° (18720 MILS, MILL)

1960 G-M ANGLE OF 0-9 1062° (18880 MILS, MILL)

1960 G-M ANGLE OF 0-9 1071° (19040 MILS, MILL)

1960 G-M ANGLE OF 0-9 1080° (19200 MILS, MILL)

1960 G-M ANGLE OF 0-9 1089° (19360 MILS, MILL)

1960 G-M ANGLE OF 0-9 1098° (19520 MILS, MILL)

1960 G-M ANGLE OF 0-9 1107° (19680 MILS, MILL)

1960 G-M ANGLE OF 0-9 1116° (19840 MILS, MILL)

1960 G-M ANGLE OF 0-9 1125° (20000 MILS, MILL)

1960 G-M ANGLE OF 0-9 1134° (20160 MILS, MILL)

1960 G-M ANGLE OF 0-9 1143° (20320 MILS, MILL)

1960 G-M ANGLE OF 0-9 1152° (20480 MILS, MILL)

1960 G-M ANGLE OF 0-9 1161° (20640 MILS, MILL)

1960 G-M ANGLE OF 0-9 1170° (20800 MILS, MILL)

1960 G-M ANGLE OF 0-9 1179° (20960 MILS, MILL)

1960 G-M ANGLE OF 0-9 1188° (21120 MILS, MILL)

1960 G-M ANGLE OF 0-9 1197° (21280 MILS, MILL)

1960 G-M ANGLE OF 0-9 1206° (21440 MILS, MILL)

1960 G-M ANGLE OF 0-9 1215° (21600 MILS, MILL)

1960 G-M ANGLE OF 0-9 1224° (21760 MILS, MILL)

1960 G-M ANGLE OF 0-9 1233° (21920 MILS, MILL)

1960 G-M ANGLE OF 0-9 1242° (22080 MILS, MILL)

1960 G-M ANGLE OF 0-9 1251° (22240 MILS, MILL)

1960 G-M ANGLE OF 0-9 1260° (22400 MILS, MILL)

1960 G-M ANGLE OF 0-9 1269° (22560 MILS, MILL)

1960 G-M ANGLE OF 0-9 1278° (22720 MILS, MILL)

1960 G-M ANGLE OF 0-9 1287° (22880 MILS, MILL)

1960 G-M ANGLE OF 0-9 1296° (23040 MILS, MILL)

1960 G-M ANGLE OF 0-9 1305° (23200 MILS, MILL)

1960 G-M ANGLE OF 0-9 1314° (23360 MILS, MILL)

1960 G-M ANGLE OF 0-9 1323° (23520 MILS, MILL)

1960 G-M ANGLE OF 0-9 1332° (23680 MILS, MILL)

1960 G-M ANGLE OF 0-9 1341° (23840 MILS, MILL)

1960 G-M ANGLE OF 0-9 1350° (24000 MILS, MILL)

1960 G-M ANGLE OF 0-9 1359° (24160 MILS, MILL)

1960 G-M ANGLE OF 0-9 1368° (24320 MILS, MILL)

1960 G-M ANGLE OF 0-9 1377° (24480 MILS, MILL)

1960 G-M ANGLE OF 0-9 1386° (24640 MILS, MILL)

1960 G-M ANGLE OF 0-9 1395° (24800 MILS, MILL)

1960 G-M ANGLE OF 0-9 1404° (24960 MILS, MILL)

1960 G-M ANGLE OF 0-9 1413° (25120 MILS, MILL)

1960 G-M ANGLE OF 0-9 1422° (25280 MILS, MILL)

1960 G-M ANGLE OF 0-9 1431° (25440 MILS, MILL)

1960 G-M ANGLE OF 0-9 1440° (25600 MILS, MILL)

1960 G-M ANGLE OF 0-9 1449° (25760 MILS, MILL)

1960 G-M ANGLE OF 0-9 1458° (25920 MILS, MILL)

1960 G-M ANGLE OF 0-9 1467° (26080 MILS, MILL)

1960 G-M ANGLE OF 0-9 1476° (26240 MILS, MILL)

1960 G-M ANGLE OF 0-9 1485° (26400 MILS, MILL)

1960 G-M ANGLE OF 0-9 1494° (26560 MILS, MILL)

1960 G-M ANGLE OF 0-9 1503° (26720 MILS, MILL)

1960 G-M ANGLE OF 0-9 1512° (26880 MILS, MILL)

1960 G-M ANGLE OF 0-9 1521° (27040 MILS, MILL)

1960 G-M ANGLE OF 0-9 1530° (27200 MILS, MILL)

1960 G-M ANGLE OF 0-9 1539° (27360 MILS, MILL)

1960 G-M ANGLE OF 0-9 1548° (27520 MILS, MILL)

1960 G-M ANGLE OF 0-9 1557° (27680 MILS, MILL)

1960 G-M ANGLE OF 0-9 1566° (27840 MILS, MILL)

1960 G-M ANGLE OF 0-9 1575° (28000 MILS, MILL)

1960 G-M ANGLE OF 0-9 1584° (28160 MILS, MILL)

1960 G-M ANGLE OF 0-9 1593° (28320 MILS, MILL)

1960 G-M ANGLE OF 0-9 1602° (28480 MILS, MILL)

1960 G-M ANGLE OF 0-9 1611° (28640 MILS, MILL)

1960 G-M ANGLE OF 0-9 1620° (28800 MILS, MILL)

1960 G-M ANGLE OF 0-9 1629° (28960 MILS, MILL)

1960 G-M ANGLE OF 0-9 1638° (29120 MILS, MILL)

1960 G-M ANGLE OF 0-9 1647° (29280 MILS, MILL)

1960 G-M ANGLE OF 0-9 1656° (29440 MILS, MILL)

1960 G-M ANGLE OF 0-9 1665° (29600 MILS, MILL)

1960 G-M ANGLE OF 0-9 1674° (29760 MILS, MILL)

1960 G-M ANGLE OF 0-9 1683° (29920 MILS, MILL)

1960 G-M ANGLE OF 0-9 1692° (30080 MILS, MILL)

1960 G-M ANGLE OF 0-9 1701° (30240 MILS, MILL)

1960 G-M ANGLE OF 0-9 1710° (30400 MILS, MILL)

1960 G-M ANGLE OF 0-9 1719° (30560 MILS, MILL)

1960 G-M ANGLE OF 0-9 1728° (30720 MILS, MILL)

1960 G-M ANGLE OF 0-9 1737° (30880 MILS, MILL)

1960 G-M ANGLE OF 0-9 1746° (31040 MILS, MILL)

1960 G-M ANGLE OF 0-9 1755° (31200 MILS, MILL)

1960 G-M ANGLE OF 0-9 1764° (31360 MILS, MILL)

1960 G-M ANGLE OF 0-9 1773° (31520 MILS, MILL)

1960 G-M ANGLE OF 0-9 1782° (31680 MILS, MILL)

1960 G-M ANGLE OF 0-9 1791° (31840 MILS, MILL)

1960 G-M ANGLE OF 0-9 1800° (32000 MILS, MILL)

1960 G-M ANGLE OF 0-9 1809° (32160 MILS, MILL)

1960 G-M ANGLE OF 0-9 1818° (32320 MILS, MILL)

1960 G-M ANGLE OF 0-9 1827° (32480 MILS, MILL)

1960 G-M ANGLE OF 0-9 1836° (32640 MILS, MILL)

1960 G-M ANGLE OF 0-9 1845° (32800 MILS, MILL)

1960 G-M ANGLE OF 0-9 1854° (32960 MILS, MILL)

1960 G-M ANGLE OF 0-9 1863° (33120 MILS, MILL)

1960 G-M ANGLE OF 0-9 1872° (33280 MILS, MILL)

1960 G-M ANGLE OF 0-9 1881° (33440 MILS, MILL)

1960 G-M ANGLE OF 0-9 1890° (33600 MILS, MILL)

1960 G-M ANGLE OF 0-9 1899° (33760 MILS, MILL)

1960 G-M ANGLE OF 0-9 1908° (33920 MILS, MILL)

1960 G-M ANGLE OF 0-9 1917° (34080 MILS, MILL)

1960 G-M ANGLE OF 0-9 1926° (34240 MILS, MILL)

1960 G-M ANGLE OF 0-9 1935° (34400 MILS, MILL)

1960 G-M ANGLE OF 0-9 1944° (34560 MILS, MILL)

1960 G-M ANGLE OF 0-9 1953° (34720 MILS, MILL)

1960 G-M ANGLE OF 0-9 1962° (34880 MILS, MILL)

1960 G-M ANGLE OF 0-9 1971° (35040 MILS, MILL)

1960 G-M ANGLE OF 0-9 1980° (35200 MILS, MILL)

1960 G-M ANGLE OF 0-9 1989° (35360 MILS, MILL)

1960 G-M ANGLE OF 0-9 1998° (35520 MILS, MILL)

1960 G-M ANGLE OF 0-9 2007° (35680 MILS, MILL)

1960 G-M ANGLE OF 0-9 2016° (35840 MILS, MILL)

1960 G-M ANGLE OF 0-9 2025° (36000 MILS, MILL)

1960 G-M ANGLE OF 0-9 2034° (36160 MILS, MILL)

1960 G-M ANGLE OF 0-9 2043° (36320 MILS, MILL)

1960 G-M ANGLE OF 0-9 2052° (36480 MILS, MILL)

1960 G-M ANGLE OF 0-9 2061° (36640 MILS, MILL)

1960 G-M ANGLE OF 0-9 2070° (36800 MILS, MILL)

1960 G-M ANGLE OF 0-9 2079° (36960 MILS, MILL)

1960 G-M ANGLE OF 0-9 2088° (37120 MILS, MILL)

1960 G-M ANGLE OF 0-9 2097° (37280 MILS, MILL)

1960 G-M ANGLE OF 0-9 2106° (37440 MILS, MILL)

1960 G-M ANGLE OF 0-9 2115° (37600 MILS, MILL)

1960 G-M ANGLE OF 0-9 2124° (37760 MILS, MILL)

1960 G-M ANGLE OF 0-9 2133° (37920 MILS, MILL)

1960 G-M ANGLE OF 0-9 2142° (38080 MILS, MILL)

1960 G-M ANGLE OF 0-9 2151° (38240 MILS, MILL)

1960 G-M ANGLE OF 0-9 2160° (38400 MILS, MILL)

1960 G-M ANGLE OF 0-9 2169° (38560 MILS, MILL)

1960 G-M ANGLE OF 0-9 2178° (38720 MILS, MILL)

1960 G-M ANGLE OF 0-9 2187° (38880 MILS, MILL)

1960 G-M ANGLE OF 0-9 2196° (39040 MILS, MILL)

1960 G-M ANGLE OF 0-9 2205° (39200 MILS, MILL)

1960 G-M ANGLE OF 0-9 2214° (39360 MILS, MILL)

1960 G-M ANGLE OF 0-9 2223° (39520 MILS, MILL)

1960 G-M ANGLE OF 0-9 2232° (39680 MILS, MILL)

1960 G-M ANGLE OF 0-9 2241° (39840 MILS, MILL)

1960 G-M ANGLE OF 0-9 2250° (