

1:250,000—EDITION 1
CHIBAVAYA, MOZAMBIQUE
1501 SF 36-3
MOZAMBIQUE AND RHODESIA

LEGEND

POPULATED PLACES

- First importance: BEIRA
- Second importance: CHEMGA
- Third importance: MABALANE
- Fourth importance: Namialane
- Fifth importance: Elvas

ROADS

- All weather: 12 LANES
- Hard surface, two or more lanes wide: 12 LANES
- Loose or light surface, two or more lanes wide: 12 LANES
- Hard surface, one lane wide: 12 LANES
- Loose or light surface, one lane wide: 12 LANES
- Fair or dry weather, loose surface: 12 LANES
- Cart track, footpath, trail: 12 LANES
- Route marker: National, Regional (Secondary): 12 LANES

RAILROADS

- Normal gauge 1.067 m. (3'6"): 12 LANES
- Narrow gauge: 12 LANES
- Station: 12 LANES

BOUNDARIES

- International: 12 LANES
- Primary administrative: 12 LANES
- Reservation: 12 LANES
- Area name: SABIE
- Kraal, landmark feature: 12 LANES
- School, church: 12 LANES
- Mine or quarry: 12 LANES
- Horizontal control point: 12 LANES
- Spot elevation in meters: Normal, Critical: 125, 129
- Woods: brushwood, scattered trees, low growth: 125, 129
- Orchard, plantation: 125, 129
- Marsh or swamp: 125, 129
- Sand, flat or rolling: 125, 129

AERODROMES, Military or Civil

- Field limits, with runway pattern: EDNA 221
- EDNA—Name: 221—Elevation
- Field limits, with runway pattern unknown: 221—Elevation
- Field limits unknown, with runway pattern: 221—Elevation
- Field limits and runway pattern unknown: 221—Elevation

SEAPLANE BASE

- SEAPLANE EMERGENCY: 221—Elevation

HELIPORT

- HELIPORT: 221—Elevation

VISUAL AIDS AND OBSTRUCTIONS

- Obstruction: 221—Elevation
- 300: Elevation of obstruction top, above sea level; 1000: Elevation of obstruction top, above ground level.
- Group obstruction: 221—Elevation
- Radio facility obstruction: 221—Elevation
- Power transmission line: 221—Elevation

TERRAIN ELEVATIONS

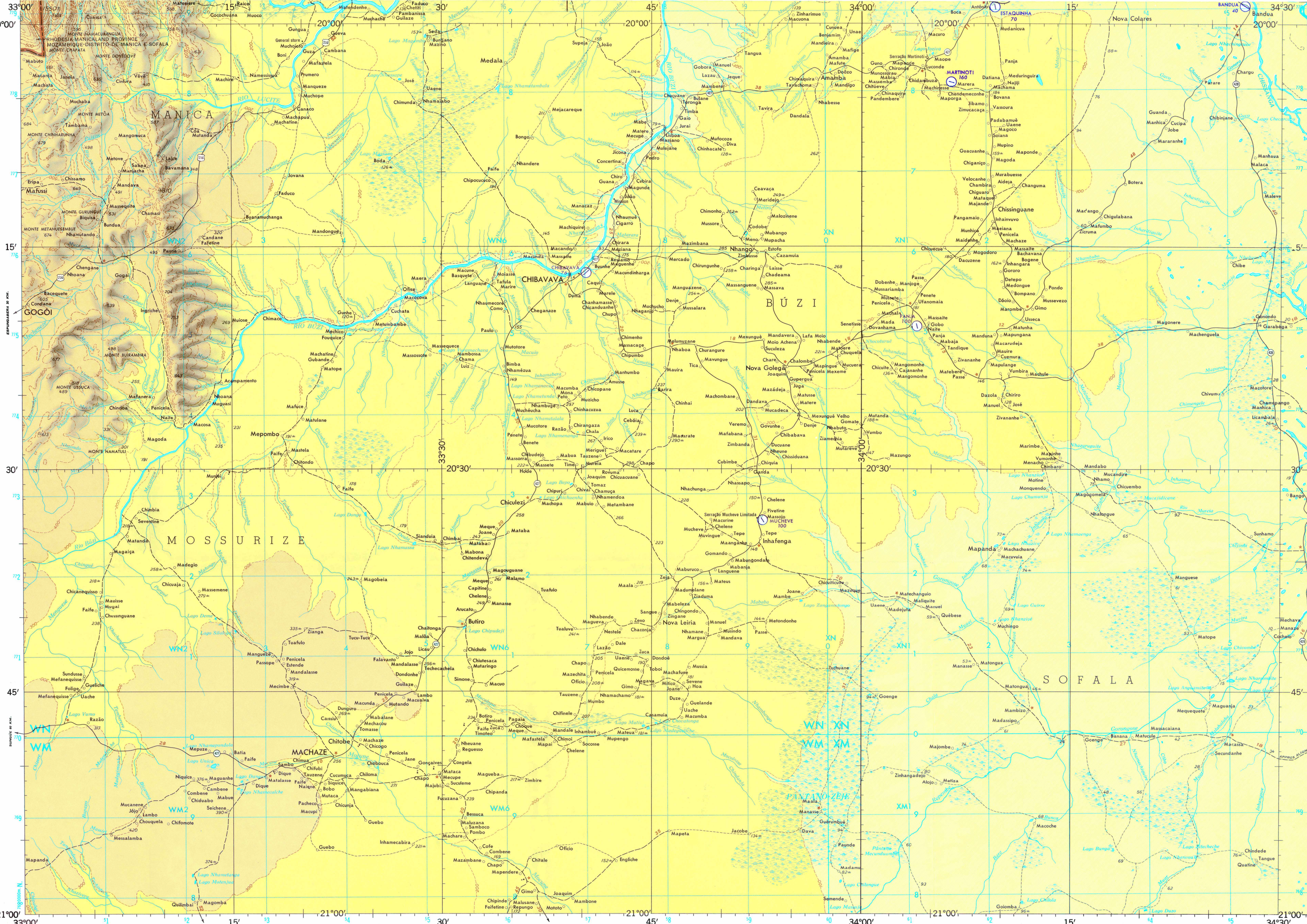
- HIGHEST elevation is /550 ± meters located at 19°39' S, 33°01' E.
- ± following elevation value indicates accuracy is not within 50 meters.

MAGNETIC VARIATION FOR 1965 FROM TRUE NORTH FOR THE CENTER OF THE SHEET IS APPROXIMATELY 12°15' WEST.

NOTES

- No obstructions are known to exist within this area.
- Names for symbolized populated places are omitted where information is not available or where density of detail does not permit their inclusion.
- The representation of international boundaries is not necessarily authoritative. A lane is generally considered as being a minimum of 2.5 meters (8 feet) in width.
- Vegetation information is not available for this graphic.
- Numbers between stars denote approximate distances in kilometers.

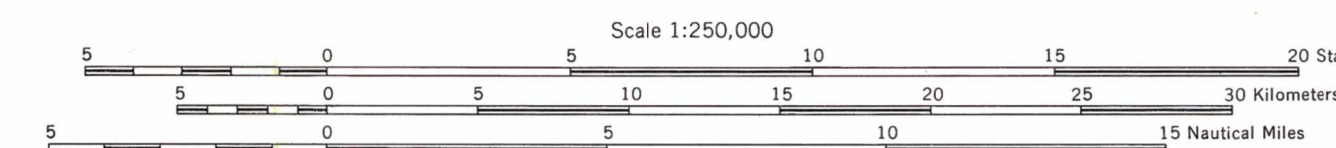
1:250,000—EDITION 1
CHIBAVAYA, MOZAMBIQUE
1501 SF 36-3
MOZAMBIQUE AND RHODESIA



Prepared under the direction of the Defense Intelligence Agency and published by the Army Map Service, Corps of Engineers, Washington, D.C., 20315. Compiled in 1965 from best available source materials.

Reprinted by NIMA 03-00

JOINT OPERATIONS GRAPHIC (GROUND)



Scale 1:250,000

INTERVAL OF APPROXIMATE CONTOURS 100 METERS

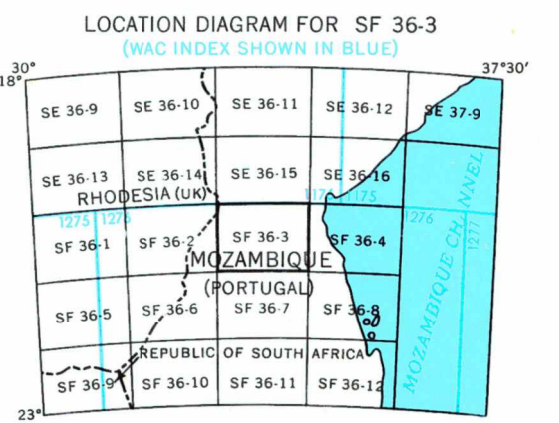
HORIZONTAL DATUM: NEW (1950) ARC

TRANSVERSE MERCATOR PROJECTION

BLUE NUMBERED LINES INDICATE THE 10,000 METER UNIVERSAL TRANSVERSE MERCATOR GRID, ZONE 36, CLARKE 1880 SPHEROID

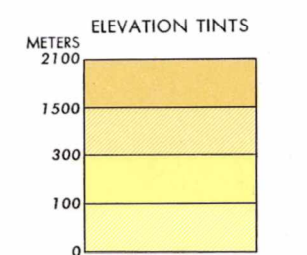


GRID ZONE DESIGNATION	TO GIVE A STANDARD REFERENCE ON THIS SHEET TO NEAREST 1000 METERS
WN 70	Read letters identifying 100,000 meter square in which the point lies.
XN 70	Locate the VERTICAL grid line to left of point and read LARGE figure entering the line either in the top or bottom margin, or on the line itself.
WM 70	Estimate tenths from grid line to point. Estimate tenths from grid line to point. Estimate tenths from grid line to point.
XM 70	Estimate tenths from grid line to point. Estimate tenths from grid line to point. Estimate tenths from grid line to point.



GLOSSARY

- District: primary administrative division
- Lago: lake, pond
- Monte: mountain, mountain
- Pantano: swamp
- Rio: stream
- Serra: sawmill



NSN 7643014048986
NIMA Ref No. 1501XSF3603
ED NO 001