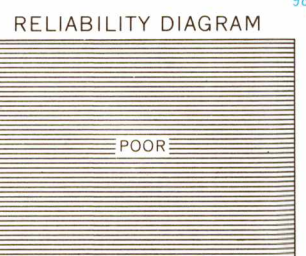
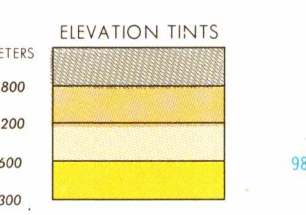
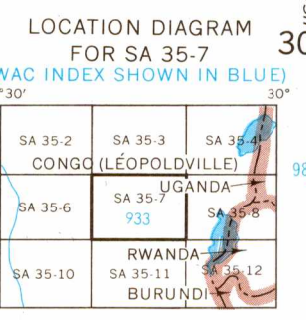


1:250,000 - EDITION 1
WALIKALE,
CONGO (LEOPOLDVILLE)
JOG (G) 1501 SA 35-7

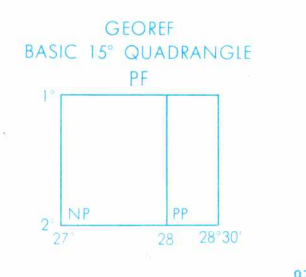


Planimetry compiled from 1:250,000
scale maps dated 1958.
Elevations compiled from 1:250,000 scale
maps dated 1958.
VERTICAL ACCURACY OF APPROXIMATE
CONTOURS IS 300 METERS.

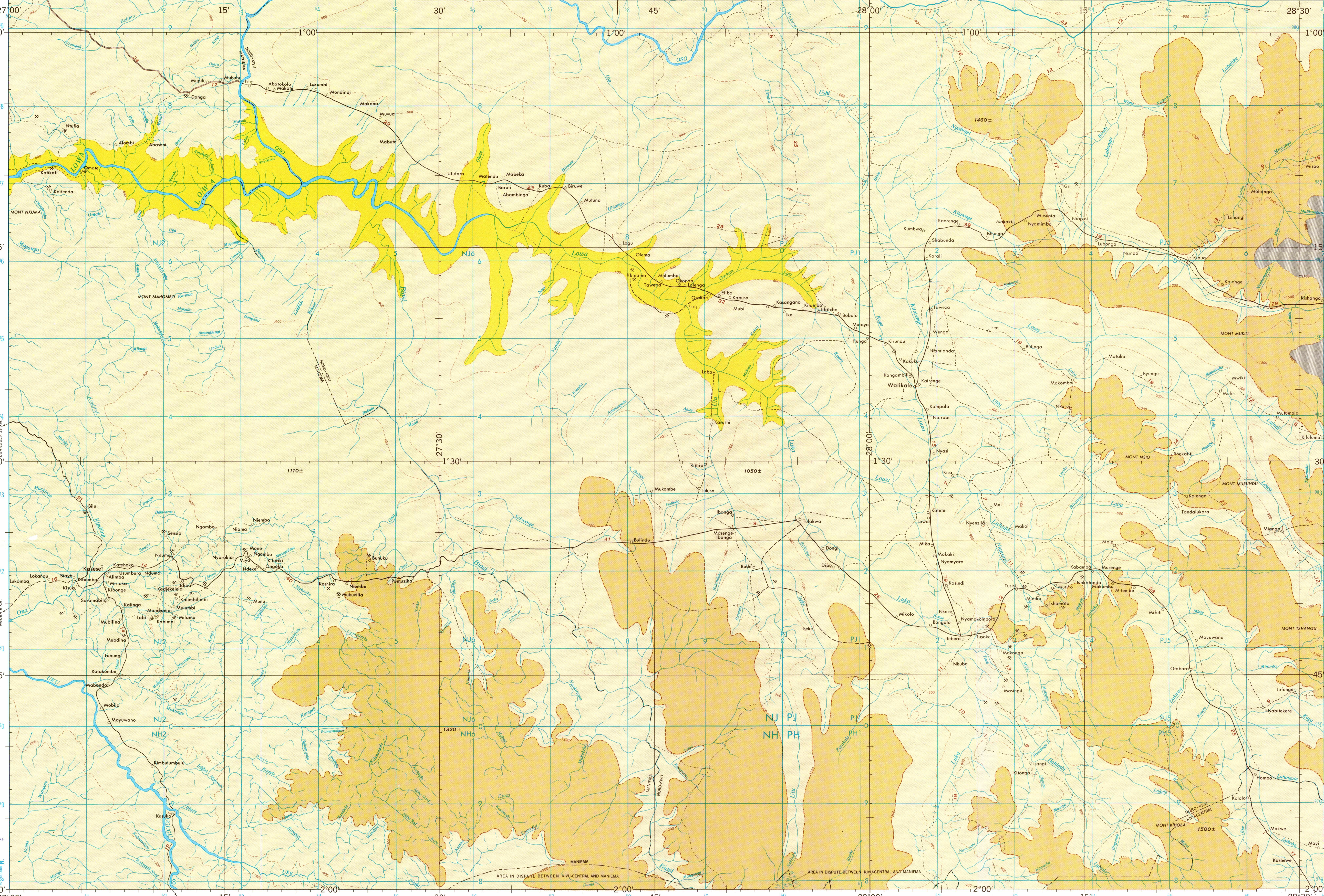


GLOSSARY

FRENCH	ENGLISH
bay	baie
cape, point	cap
channel	chenaie
waterfalls	chutes
lake, pond	étang
(islands)	îlots
hill	kaga
lake(s)	lac(s)
marsh	marais
mountain(s)	mont(s)
rapids	rapides



MAGNETIC VARIATION FOR 1965 IS APPROXIMATELY 4°30' W OVER THE ENTIRE AREA

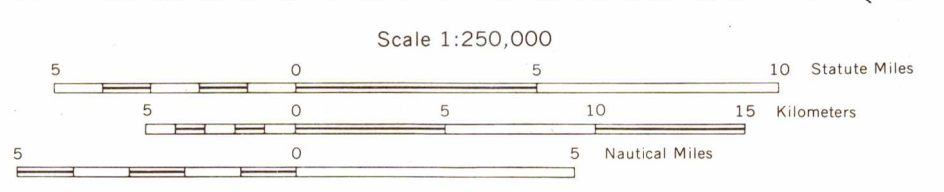


Prepared under the direction of the Defense Intelligence Agency and published by the Aeronautical Chart and Information Center, U.S. Air Force, St. Louis, Missouri, 63118. Compiled in 1966 from best available source materials.



GRID TYPING CONVENTION	TO GIVE A STANDARD REFERENCE ON THE SHEET TO NEAREST 100 METERS
	SAMPLE POINT: 1000 1. Read within identifying 100,000 meter square which the point lies 2. Locate the vertical grid line to LEFT of point and read LARGE figure, noting the line letter in the lower margin or in the line itself 3. Locate the horizontal grid line below point and read LARGE figure, noting the line letter in the left margin or in the line itself 4. Complete letter from grid line to point 5. Complete letter from grid line to point 6. Complete letter from grid line to point 7. Reading "upward" in any direction, prefix "Grid Over" (Designation, etc.)

- ROADS
- All weather, hard surface
 - Two or more lanes wide
 - Less than two lanes wide
 - All weather, loose or light surface
 - Two or more lanes wide
 - Less than two lanes wide
 - Fair or dry weather loose surface, dirt road
 - Carpath
 - Trail (foot path)
- National Route
- Secondary Route
- RAILROADS
- Normal gauge
 - Narrow gauge
- BOUNDARIES
- International
 - State or Provincial (Administrative)



CONTOUR INTERVAL 300 METERS
ALL CONTOURS ARE APPROXIMATE

VERTICAL DATUM: MEAN SEA LEVEL
HORIZONTAL DATUM: UNDETERMINED
TRANSVERSE MERCATOR PROJECTION

BLUE NUMBERED LINES INDICATE THE 10,000 METER UNIVERSAL TRANSVERSE MERCATOR GRID ZONE 35M AND 35N CLARKE 1880 SPHEROID. THE LAST FOUR DIGITS OF THE GRID NUMBERS ARE OMITTED.

- AERODROMES (Military or Civil)
- Field limits with runway pattern
 - EDNA - Name
 - 221 - Elevation
 - Field limits, with runway pattern unknown
 - Field limits unknown, with runway pattern
 - Field limits and runway pattern unknown
- SEAPLANE BASE
- SEAPLANE (EMERGENCY)
- HELIPORT

- VISUAL AIDS AND OBSTRUCTIONS
- Obstruction
 - 338 - Elevation of obstruction top, above sea level.
 - 791 - Elevation of obstruction top, above ground level.
 - Group obstruction
 - Radio facility obstruction
 - Power transmission line
- TERRAIN ELEVATIONS
- HIGHEST elevation is UNKNOWN
- ± following elevation value indicates accuracy is not within 30 meters
- Horizontal control point

NOTES:
No obstructions 41 meters or more above ground level are known to exist within this area.
THE ALIGNMENT OF ADMINISTRATIVE BOUNDARIES IS APPROXIMATE.
Figures along roads indicate approximate distances in kilometers.
LIMITS OF VEGETATION COVERAGE UNKNOWN

USERS SHOULD REFER CORRECTIONS, ADDITIONS, AND COMMENTS TO THE NIMA CUSTOMER HELP DESK: 1-800-445-0000. COMMERCIAL: 214-380-1200. DSN 480-1236. OR WRITE TO: DIRECTOR, NATIONAL IMAGERY AND MAPPING AGENCY, ATTN: CD, 8013 LEE HIGHWAY, FARMAX, VA 22039-2337.

NSN 764301438334
ED. NO. 001
NIMA STOCK NO. 1501XSA3507