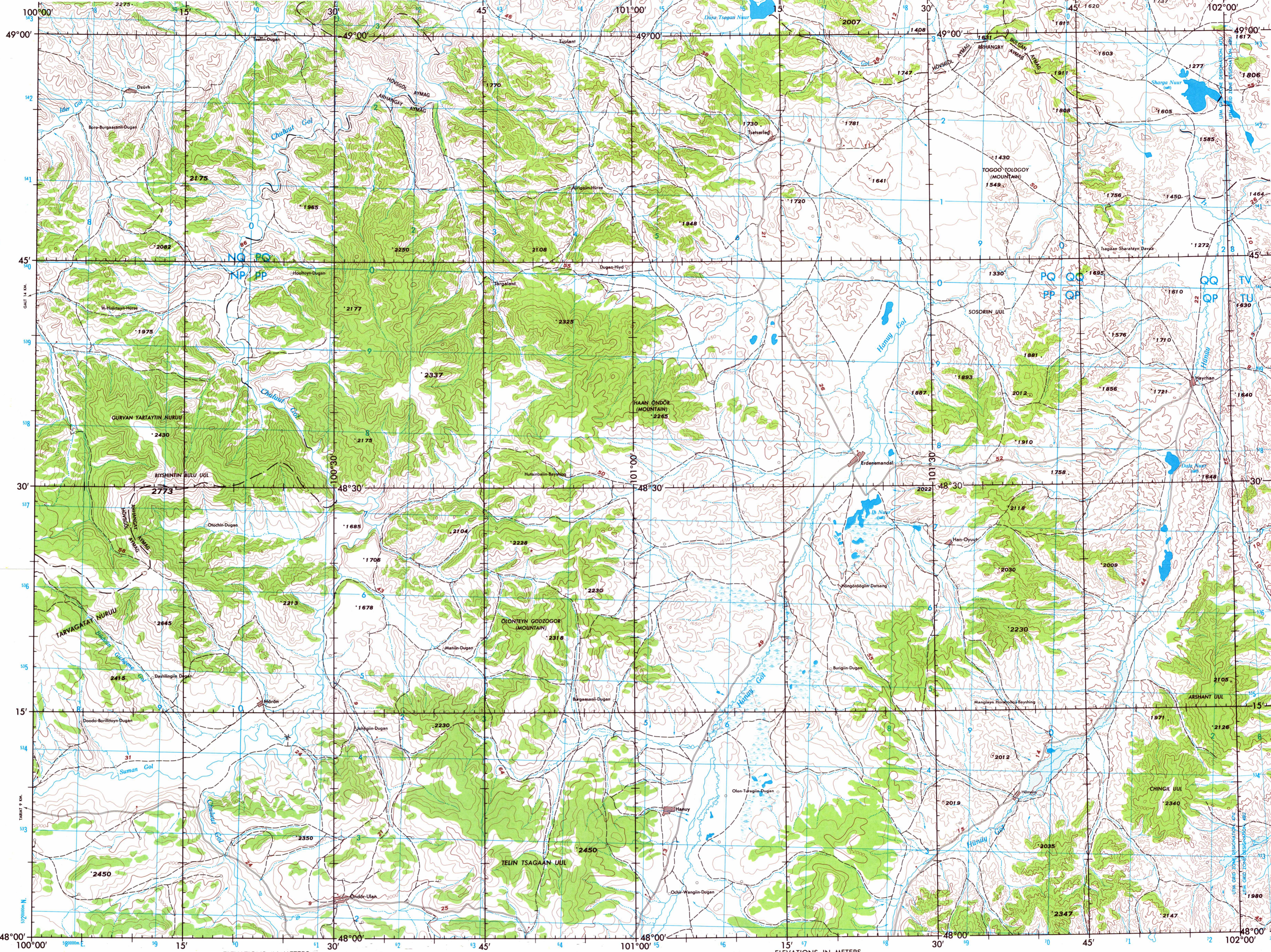


SERIES 1501
SHEET NM 47-12
EDITION 1

- POPULATED PLACES**
- First importance: ULAANBAATAR
 - Second importance: CHOYBALSAN
 - Third importance: MORON
 - Fourth importance: Jargalant
 - Fifth importance: Hushuu-Some
- ROADS**
- All weather, hard surface: 3 LANES
 - Two or more lanes: 2 LANES
 - One lane: 1 LANE
 - All weather, loose or light surface: 3 LANES
 - Two or more lanes: 2 LANES
 - One lane: 1 LANE
 - Fair or dry weather, loose surface: 3 LANES
 - Two or more lanes: 2 LANES
 - One lane: 1 LANE
 - Track or trail: 1 LANE
- RAILROADS**
- Normal gauge 1.44 m (4'8 1/2")
 - Narrow gauge
 - Station, approximate location
- BOUNDARIES**
- International
 - First-order administrative division (Aymag)
 - Reservation
- VEGETATION**
- Woods
- HYDROGRAPHY**
- Rice paddy, land subject to inundation
 - Wall, Perennial, Intermittent
 - Intermittent stream, Single, Double line
 - Disappearing stream, Swamp or marsh
 - Intermittent lake, Wet sand, sabkha
- OTHER FEATURES**
- Glaciers, Snowfield
 - Horizontal control point, Landmark, Mine
 - Levee, Sand
 - Dunes, Crescent, Lateral, Ripole
 - Area name
- TERRAIN ELEVATIONS**
- Spot elevations, Normal, Critical
 - HIGHEST KNOWN elevation is 2773 meters at 48°30'N, 101°14'E



1975 MAGNETIC DECLINATION FROM TRUE NORTH VARIES FROM 15' (10 MILES) WESTERLY FOR THE CENTER OF THE WEST EDGE TO 1' (20 MILES) WESTERLY FOR THE CENTER OF THE EAST EDGE.

LOCATION DIAGRAM
INDEX INDEX SHOWN IN BLUE
(WAC INDEX SHOWN IN RED/BROWN)

NM 47.4	NM 47.5	NM 47.6	NM 48.4
NM 47.7	NM 47.8	NM 47.9	NM 48.7
NM 47.10	NM 47.11	NM 47.12	NM 48.10
NM 47.1	NM 47.2	NM 47.3	NM 48.2
NM 47.4	NM 47.5	NM 47.6	NM 48.4

Prepared and published by the Defense Mapping Agency Topographic Center, Washington, D. C. Compiled 1975



CONVERSION OF ELEVATIONS

METERS	FEET	METERS	FEET
1000	3281	10000	32808
900	2953	9000	29528
800	2625	8000	26247
700	2297	7000	22966
600	1969	6000	19685
500	1640	5000	16404
400	1312	4000	13123
300	984	3000	9842
200	656	2000	6562
100	328	1000	3281

SAMPLE 10,000 METER GRID SQUARE

10000 M. SQUARE IDENTIFICATION
See Body of Map
GRID ZONE DESIGNATION: 47UJ

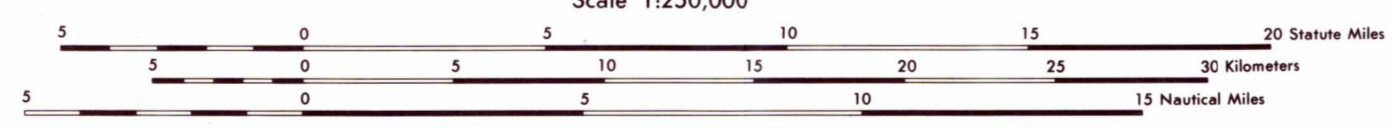
SAMPLE 1,000 METER REFERENCE

- Read letters identifying the 10,000 meter square in which the point lies.
- Read large number labeling the VERTICAL grid line left of point. Estimate tenths (1,000 meters) from grid line to point.
- Read large number labeling the HORIZONTAL grid line below point. Estimate tenths (1,000 meters) from grid line to point. Example: A81234

WHEN REPORTING OUTSIDE THE GRID ZONE DESIGNATION AREA, IN WHICH THE POINT LIES, PREFIX THE GRID ZONE DESIGNATION. Example: 47UJ81234

JOINT OPERATIONS GRAPHIC

Scale 1:250,000
ELEVATIONS IN METERS
CONTOUR INTERVAL 100 METERS WITH SUPPLEMENTARY CONTOURS AT 50 METER INTERVALS



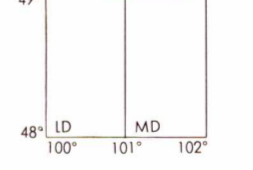
BLUE NUMBERED LINES INDICATE THE 10,000 METER UNIVERSAL TRANSVERSE MERCATOR GRID ZONE 47, WORLD GEODETIC SYSTEM.

USERS SHOULD REFER CORRECTIONS, ADDITIONS, AND COMMENTS TO THE NIMA CUSTOMER HELP DESK: 1-800-455-8899; COMMERCIAL: 314-260-5032; DSN 490-5032; OR WRITE TO: DIRECTOR, NATIONAL IMAGERY AND MAPPING AGENCY, ATTN: COO, MAIL STOP P-31, 4600 SANGAMUNE ROAD, BETHESDA, MD 20818-9003

GLOSSARY

- Aymag: province
- Davaa: mountain pass
- Dugan: temple
- Gol: river
- Hüree: monastery
- Nuruu: mountain range
- Nuur: lake
- Uul: mountain

GEOREF BASIC 15' QUADRANGLE



RELIABILITY OF THIS GRAPHIC

Compiled from best available source materials.
Horizontal Datum: World Geodetic System.
Vertical Datum: Mean Sea Level.
Transverse Mercator Projection.

NOTES:
No obstructions 61 meters or more above ground level are known to exist in this area.
Names for symbolized populated places are omitted where information is not available or where density of detail does not permit their inclusion.
Alignment of all boundaries is approximate.
Road classification should be referred to with caution.
Figures along roads indicate approximate distances in kilometers. A lane is generally considered as being 8 to 16 feet (2.44 to 4.88 meters) in width.
The reliability of vegetation information is undetermined.
THIS GRAPHIC IS NOT AN AUTHORITY ON INTERNATIONAL BOUNDARIES.
The accuracy of all elevations shown is not within 30 meters. NAMES ON THIS GRAPHIC DO NOT NECESSARILY INDICATE OFFICIAL RECOGNITION OF THE POLITICAL STATUS OF THE AREA CONCERNED.

NSN 7643014047552
NIMA REF. NO. 1501XNM4712

ED. NO. 001

SCALE 1:250,000
ERDENEMANDAL, MONGOLIA
SERIES 1501
SHEET NM 47-12
EDITION 1