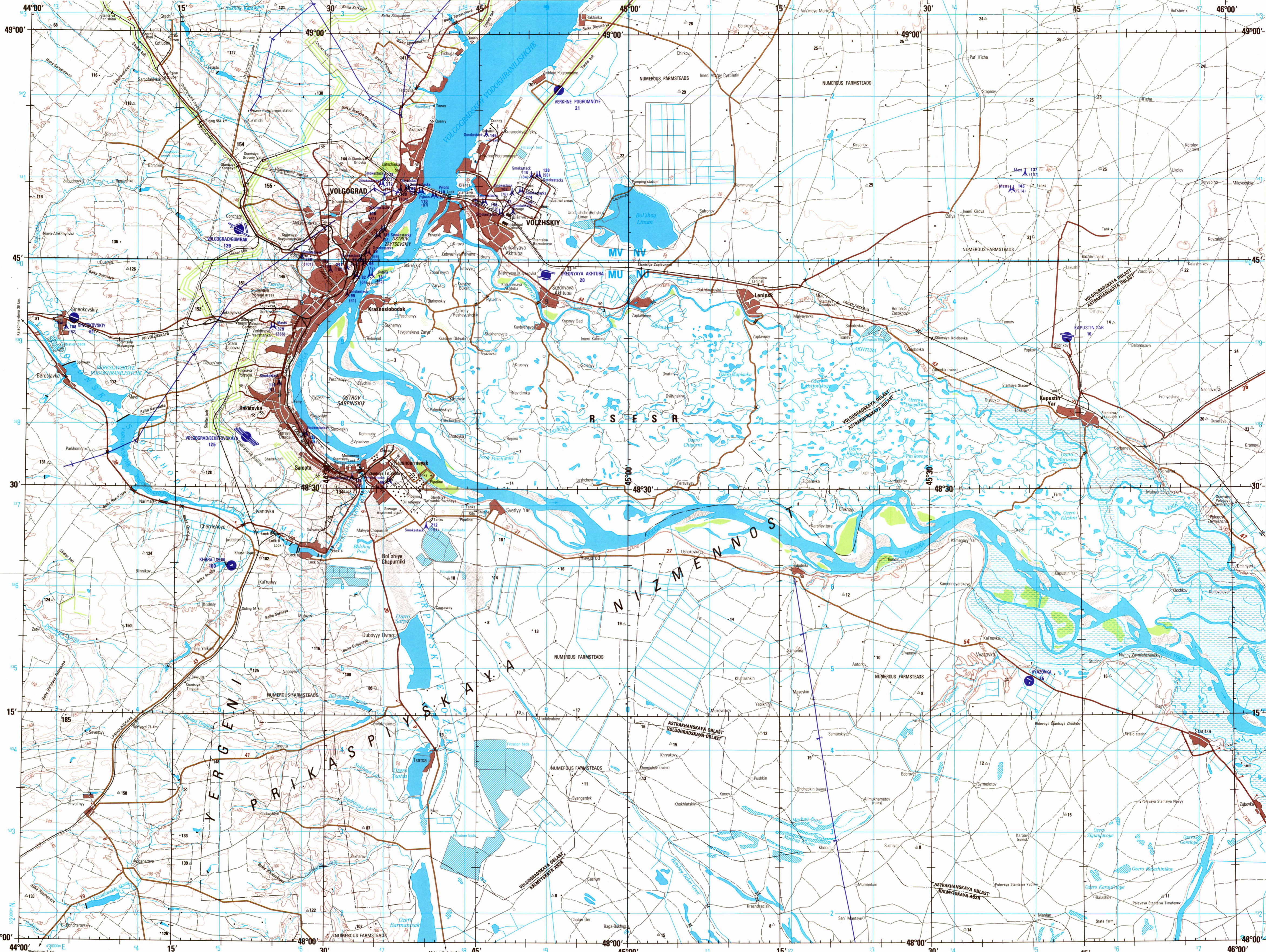
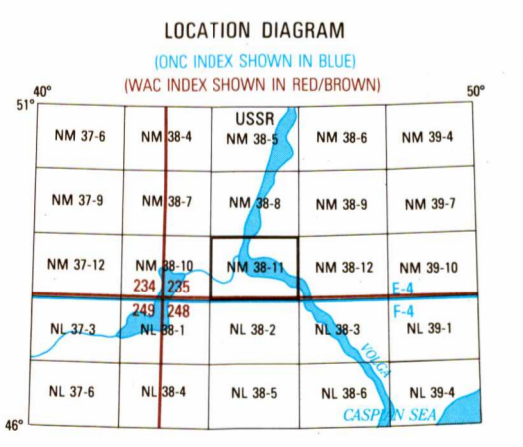


SERIES 1501
SHEET NM 38-11
EDITION 2

- POPULATED PLACES**
- Over 100,000
 - 50,000 to 100,000
 - 10,000 to 50,000
 - 2,000 to 10,000
 - Less than 2,000
- ROADS**
- Dual highway
 - All weather, hard surface
 - More than two lanes wide
 - Two lanes wide
 - One lane wide
 - All weather, loose or light surface
 - More than two lanes wide
 - Two lanes wide
 - One lane wide
 - Fair or dry weather, loose surface
 - One lane wide
 - Track or trail
 - Route marker
- RAILROADS**
- Normal gauge 1.52m (5')
 - Narrow gauge
- BOUNDARIES**
- International
 - First-order administrative division
 - Second-order administrative division
 - Reservation
- OTHER FEATURES**
- Landmark
 - Horizontal control point
 - Level: Burial mound
 - Mine
 - Dam or lock: Sand
 - Dunes: Crescent; Lateral; Ripple
- VEGETATION**
- Woods
 - Orchard or vineyard
- HYDROGRAPHY**
- Well: Perennial; Intermittent
 - Intermittent streams: Single; Double line
 - Disappearing stream: Swamp or marsh
 - Intermittent lake: Land subject to inundation
- TERRAIN ELEVATIONS**
- Spot elevation: normal, critical
 - HIGHEST KNOWN elevation is 185 meters at the following coordinates: 49°15'N, 44°04'E
 - Grid
 - ± following elevation value indicates accuracy is not within 30 meters.
- AERODROMES (Military or Civil)**
- Field limits with runway pattern
 - EDNA Name
 - 221 Elevation
 - Field limits, with runway pattern unknown
 - Field limits unknown, with runway pattern
 - Field limits and runway pattern unknown
- HELIPORT**
- VISUAL AIDS AND OBSTRUCTIONS**
- Obstruction
 - 538 Elevation of obstruction top, above sea level
 - 1751 Elevation of obstruction top, above ground level
 - Group obstruction
 - Radio facility obstruction
 - Power transmission line



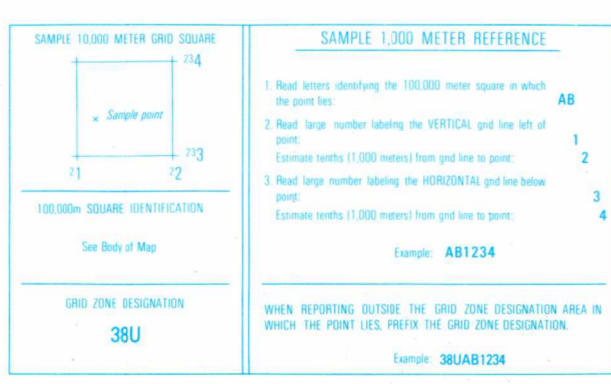
1980 MAGNETIC DECLINATION FROM TRUE NORTH VARIES FROM 7° (120 MILS) EASTERLY FOR THE CENTER OF THE WEST EDGE TO 7½° (130 MILS) EASTERLY FOR THE CENTER OF THE EAST EDGE.



Prepared and published by the Defense Mapping Agency Hydrographic/Topographic Center, Washington, D. C. Compiled in 1983.

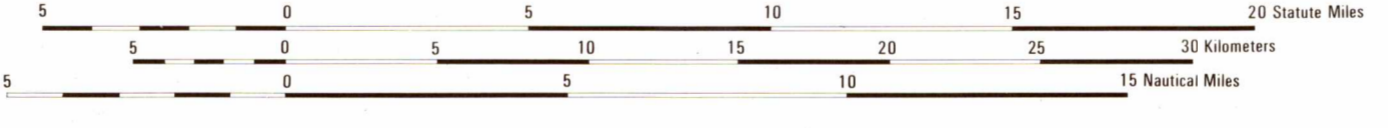
CONVERSION OF ELEVATIONS

METERS	FEET	METERS	FEET
1000	3281	10000	32808
900	2953	9000	29528
800	2625	8000	26247
700	2297	7000	22966
600	1969	6000	19685
500	1640	5000	16404
400	1312	4000	13123
300	984	3000	9842
200	656	2000	6561
150	492	1500	4921
100	328	1000	3281



JOINT OPERATIONS GRAPHIC

SCALE 1:250,000



CONTOUR INTERVAL 20 METERS

BLUE NUMBERED LINES INDICATE THE 10,000 METER UNIVERSAL TRANSVERSE MERCATOR GRID ZONE: 20N, 18N, WORLD GEODETIC SYSTEM SPHEROID.

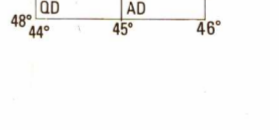
GLOSSARY

- ASSR second-order administrative division
- Birka canal
- Novomost second-order administrative division
- Oblast second-order administrative division
- Ostrov island
- Ozera lakes
- Polevaya Stantsiya field station
- Ruz'ye'd passing siding
- Stantsiya first-order administrative division
- Stantsiya station
- Sudokhodnyy Kanal navigable canal
- Uchashche tract, area
- Vodokanalizatsiya sewer
- Zimovka winter quarters

RELIABILITY OF THIS GRAPHIC

Compiled from best available source materials.

Horizontal Datum: World Geodetic System
Vertical Datum: Mean Sea Level
Transverse Mercator Projection



NOTES

- Only obstructions 81 meters or more above ground level are shown.
- Powerline information and obstructions have been extracted from the most reliable source available. However, there is no assurance that all powerlines and obstructions are shown or that their locations and heights are correct.
- On this graphic a lane is generally considered as being 2.5 meters (8 feet) in width.
- Road classification should be referred to with caution.
- Figures along roads indicate approximate distances in kilometers.
- ALIGNMENT OF ALL BOUNDARIES IS APPROXIMATE.

SCALE 1:250,000
VOLGOGRAD, U.S.S.R.
SERIES 1501
SHEET NM 38-11
EDITION 2

NSN 7643014047456
NIMA REF. NO. 1501XNM3811