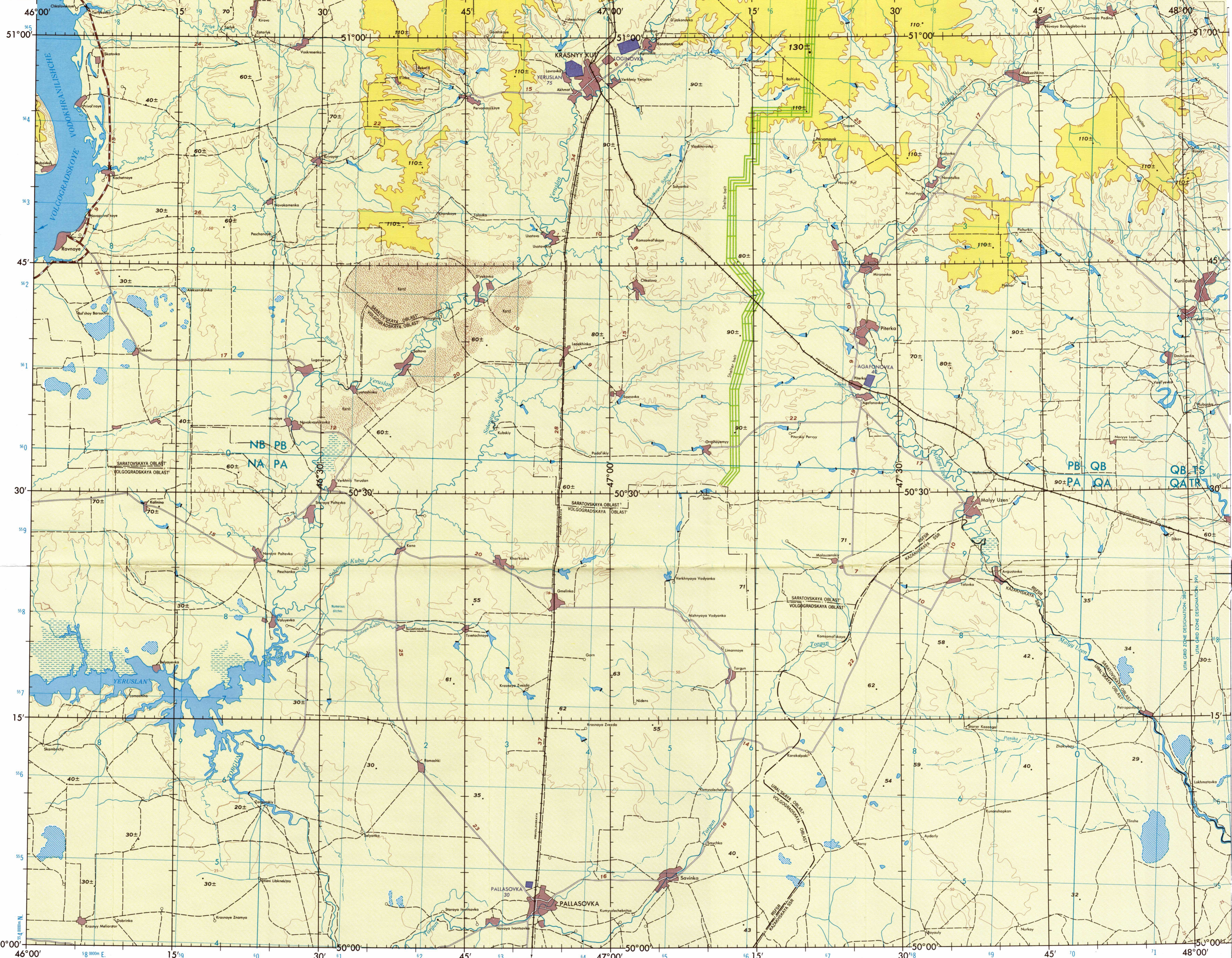
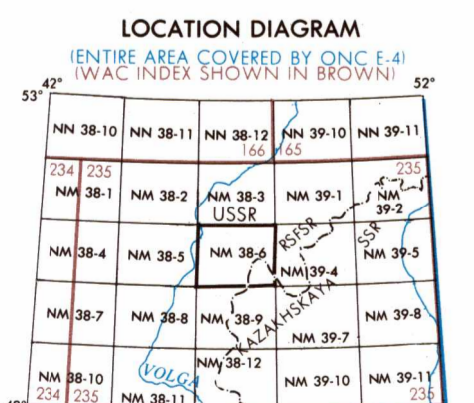


SERIES 1501
SHEET NM 38-6
EDITION 1

- LEGEND**
- POPULATED PLACES**
- OVER 100,000 MOSCOW
 - 50,000 to 100,000 MAGADAN
 - 10,000 to 50,000 OKHA
 - 2,000 to 10,000 Anadyr
 - less than 2,000 Klok
 - Landmark feature
- ROADS**
- All weather hard surface
 - Two or more lanes wide 3 LANES
 - One lane wide
 - All weather loose or light surface
 - Two or more lanes wide 3 LANES
 - One lane wide
 - Fair or dry weather loose surface
 - Track or trail
- RAILROADS**
- Normal gauge 1,523m 15'0"
 - Single track Double track
 - Narrow gauge
- BOUNDARIES**
- International
 - Primary administrative
 - Secondary administrative
- VEGETATION**
- Shrub belt
- HYDROGRAPHY**
- Inundated land
 - Swamp or marsh
 - Intermittent stream
 - Wall, Spring
 - Reef, Limit of danger
 - Perennial lake
 - Dam
 - Navigable canal
 - Sabkha, Wet sand
 - Falls
 - Rapids
 - Levee
 - Glacier, Glacial Moraine
- TERRAIN ELEVATIONS**
- HIGHEST KNOWN elevation is 130± meters at 50°59'N, 47°21'E
 - Spot elevation: Normal, Critical
 - Horizontal control point
 - Following elevation value indicates accuracy is not within 30 meters.
- AERODROMES (Military or Civil)**
- EDNA
 - 221
 - Field limits with runway pattern
 - EDNA Name
 - 221 - Elevation
 - Field limits, with runway pattern unknown
 - Field limits unknown, with runway pattern
 - Field limits and runway pattern unknown
- HELIPORT**
- VISUAL AIDS AND OBSTRUCTIONS**
- Obstruction
 - 338 - Elevation of obstruction top, above sea level
 - (79) - Elevation of obstruction top, above ground level
 - Group obstruction
 - Radio facility obstruction
 - Power transmission line



MAGNETIC VARIATION FOR 1975
IS 8° (140 MILLS) EASTERLY
OVER THE ENTIRE AREA.



Prepared and published by the Defense Mapping Agency Aerospace Center, St. Louis Air Force Station, Missouri 63118. Compiled October 1974



CONVERSION OF ELEVATIONS

METERS	FEET
1000	3281
900	2953
800	2625
700	2297
600	1969
500	1640
400	1312
300	984
200	656
100	328

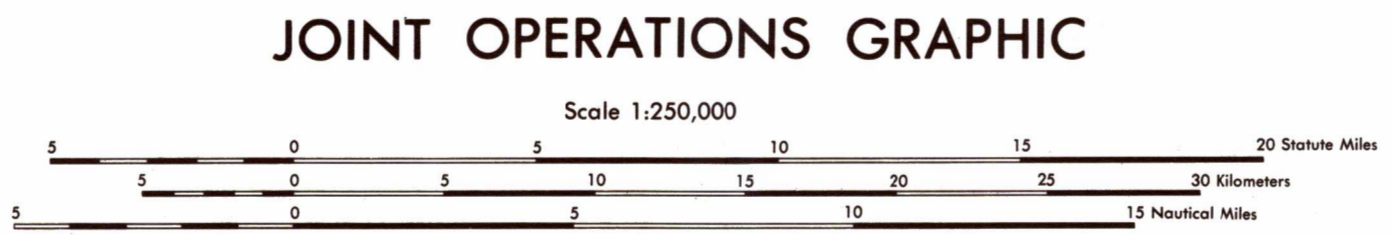
SAMPLE 10,000 METER GRID SQUARE

SAMPLE 1,000 METER REFERENCE

- Read letters identifying the 100,000 meter square in which the point lies. AB
- Read figure number identifying the VERTICAL grid line left of point. Estimate within 1,000 meters from grid line to point. 1
- Read figure number identifying the HORIZONTAL grid line below point. Estimate within 1,000 meters from grid line to point. 3

Example: AB1234

WHEN REPORTING OUTSIDE THE GRID ZONE DESIGNATION AREA IN WHICH THE POINT LIES, PREFIX THE GRID ZONE DESIGNATION. Example: 38UAB1234

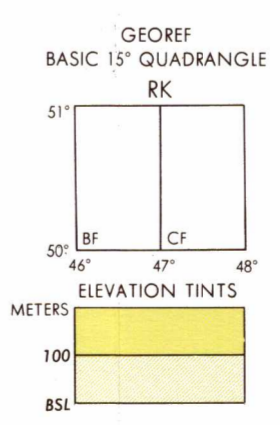


CONTOUR INTERVAL 25 METERS

BLUE NUMBERED LINES INDICATE THE 10,000 METER UNIVERSAL TRANSVERSE MERCATOR GRID, ZONE 38, WORLD GEODETIC SYSTEM 1968 SPHEROID

GLOSSARY

Vodokhranilishche..... reservoir



RELIABILITY OF THIS GRAPHIC
(as determined by standard practice)

PLOTTING ACCURACY 90% ASSURANCE

AREA I: Contours are within 25 meters

AREA II: Contours exceed 25 meters

Horizontal Datum: WGS 66
Vertical Datum: Mean Sea Level
Transverse Mercator Projection

NOTES:

- No obstructions 61 meters or more above ground level are known to exist in this area.
- Figures along roads indicate approximate distances in kilometers.
- On this graphic a lane is generally considered as being 2.5 meters (8 feet) in width.
- Road classification should be referred to with caution.
- ALIGNMENT OF ALL BOUNDARIES IS APPROXIMATE

SCALE 1:250,000
KRASNYY KUT, U.S.S.R.

SERIES 1501
SHEET NM 38-6
EDITION 1

NSN 7643014047451
NIMA REF. NO. 1501NM3806

ED. NO. 001