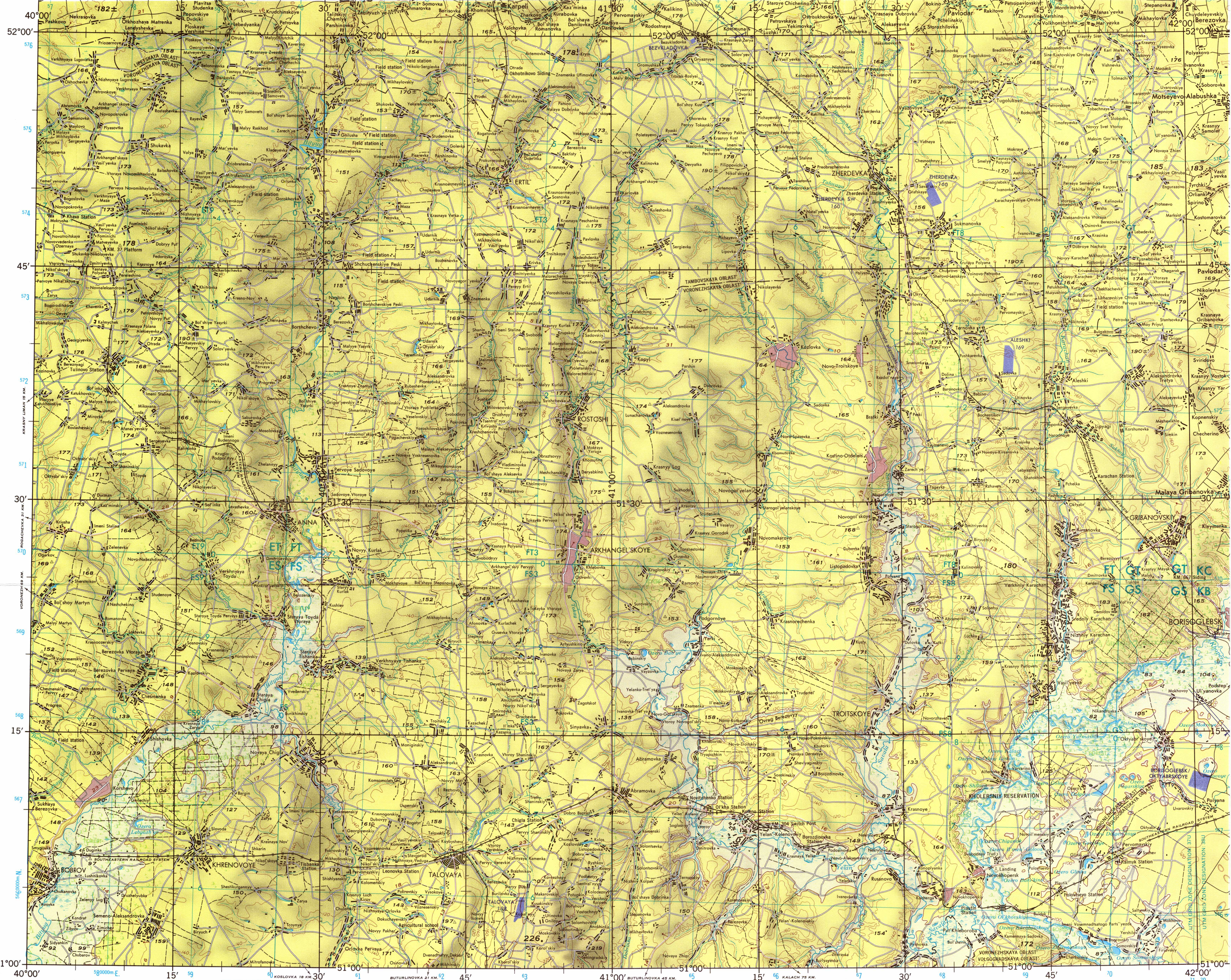


SERIES 1501
SHEET NM 37-3
EDITION 1

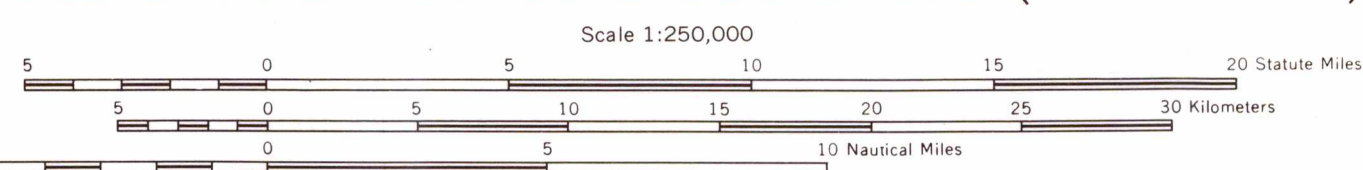
LEGEND

- POPULATED PLACES**
- Over 100,000: MOSKVA, CHERNIGOV, BATAYSK
 - 50,000 to 100,000: Giant
 - 10,000 to 50,000: Giant
 - 2,000 to 10,000: Giant
 - Less than 2,000: Giant
- ROADS**
- All weather, hard surface: Principal (3 LANES), Secondary (2 LANES)
 - One lane wide: Principal (3 LANES), Secondary (2 LANES)
 - All weather, loose or light surface: Principal (3 LANES), Secondary (2 LANES)
 - Two or more lanes wide: Principal (3 LANES), Secondary (2 LANES)
 - One lane wide: Principal (3 LANES), Secondary (2 LANES)
 - Fair or dry weather, loose surface: Principal (3 LANES), Secondary (2 LANES)
 - Cart track: Principal (3 LANES), Secondary (2 LANES)
 - Trail (footpath): Principal (3 LANES), Secondary (2 LANES)
- RAILROADS**
- Normal gauge 1.52m (5'): Single track, Double track
 - Narrow gauge: Single track, Double track
 - Station (Position: Known, Unknown): Single track, Double track
- BOUNDARIES**
- International: Single track, Double track
 - 50% Republic: Single track, Double track
 - Kray, Oblast: Single track, Double track
 - Reservation: Single track, Double track
- OTHER FEATURES**
- Sand, Lanes: Single track, Double track
 - Landmark object: Single track, Double track
 - Horizontal control point: Single track, Double track
 - Tank: Single track, Double track
 - Mine: Single track, Double track
- TERRAIN ELEVATION**
- Spot elevation: Normal, Critical
 - Highest known elevation: meters at 51°11'N, 40°52'E
 - ± following elevation value indicates accuracy is not within its contour interval.
- VEGETATION**
- Woods-brushwood, Orchard: Single track, Double track
- HYDROGRAPHY**
- Spring, Well: Single track, Double track
 - Swamp or marsh: Single track, Double track
 - Dam, Intermittent lake: Single track, Double track
- AERODROMES (Military or Civil)**
- Field limits with runway pattern: EDNA - Name, ZTI - Elevation
 - Field limits, with runway pattern unknown: EDNA - Name, ZTI - Elevation
 - Field limits unknown, with runway pattern: EDNA - Name, ZTI - Elevation
 - Field limits and runway pattern unknown: EDNA - Name, ZTI - Elevation
- SEAPLANE BASE**
- SEAPLANE (EMERGENCY): Single track, Double track
- HELIPORT**
- HELIPORT: Single track, Double track
- VISUAL AIDS AND OBSTRUCTIONS**
- Obstruction: 338 (79)
 - 338 - Elevation of obstruction top, above sea level (79) - Elevation of obstruction top, above ground level
 - Group obstruction: 338 (79)
 - Radio facility obstruction: 338 (79)
- NOTES**
- No obstructions 41 meters or more above ground level are known to exist within this area.
 - 1945 MAGNETIC DECLINATION FROM TRUE NORTH VARIES FROM 7°41' (130 MILS) EASTERLY FOR THE CENTER OF THE WEST EDGE TO 8° (140 MILS) EASTERLY FOR THE CENTER OF THE EAST EDGE. Road classification should be referred to with caution.
 - On this map a line is generally considered as being 2.5 meters (8 feet) in width.
 - Names for symbolized populated places are omitted where information is not available or where density of detail does not permit their inclusion.
 - Alignment of all boundaries is approximate.
 - Figures along roads indicate approximate distances in kilometers.
 - REFER TO LEGENDS ON ADJOINING SHEETS FOR SYMBOLIZATION OF DETAIL IN THE BLEEDING EDGES.



Prepared under the direction of the Department of Defense and published by the U. S. Army Topographic Command, Washington, D. C. Compiled in 1968 from best available source materials.

JOINT OPERATIONS GRAPHIC (GROUND)



CONTOUR INTERVAL 20 METERS WITH SUPPLEMENTARY CONTOURS AT 10 METER INTERVALS

BLUE NUMBERED LINES INDICATE THE 10,000 METER UNIVERSAL TRANSVERSE MERCATOR GRID ZONE 37, INTERNATIONAL SPHEROID

USERS SHOULD REFER CORRECTIONS, ADDITIONS, AND COMMENTS TO THE NIMA CUSTOMER HELP DESK 1-800-455-0899; COMMERCIAL 314-260-5032; DSN 490-0323; OR WRITE TO: DIRECTOR, NATIONAL IMAGERY AND MAPPING AGENCY, ATTN: COD, MAIL STOP P-37, 4600 SANGAMORE ROAD, BETHESDA, MD 20816-0033

LIMITED DISTRIBUTION. Distribution authorized to the Department of Defense, U.S. DOD contractors and to U.S. Government Agencies supporting DOD functions by authority of the Director, Defense Mapping Agency, 30 May 1990. Other requests shall be referred to Headquarters, DMA, ATTN: SOP. Declassify as "For Official Use Only."

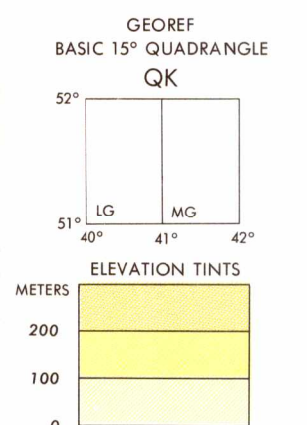
SCALE 1:250,000
YELAN'-KOLENOVSKIY, U.S.S.R.

SERIES 1501
SHEET NM 37-3
EDITION 1

THIS GRAPHIC SUPERSEDES NS01, NM 37-3



GRID ZONE DESIGNATION: 37U		TO GIVE A STANDARD REFERENCE ON THIS SHEET TO NEAREST 1000 METERS	
100,000 M. SQUARE IDENTIFICATION		SAMPLE POINT - ROAD	
ET	FT	GT	FS
ES	FS	GS	GS
IGNORE THE SMALLER figures of any grid number. Trust only the larger figures for the full coordinates. Use ONLY the LARGER figure of the grid number. Example: 5660000		SAMPLE REFERENCE: 37U8900000	
		If reporting Second P' N S or 10' E, W, prefix Grid Zone Designation, as: 37U890000	

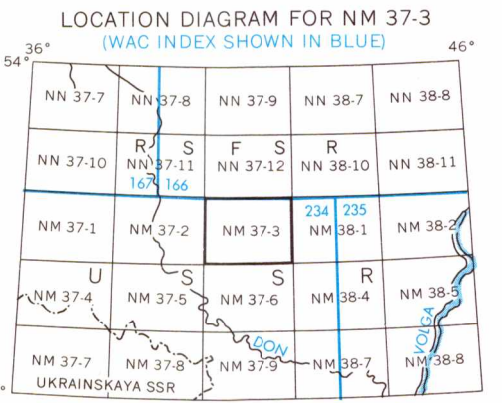


RELIABILITY OF THIS SHEET
(as determined by standard practices)

Compiled from best available source materials (1968)

Horizontal Datum: Approximate European Datum
Vertical Datum: Mean Sea Level
Transverse Mercator Projection

Reprinted by NIMA 11-2000



NSN 7643014047442
NIMA REF. NO. 1501XNM3703