

SERIES 1501
SHEET NM 36-6
EDITION 2

- POPULATED PLACES**
- Over 100,000
 - 50,000 to 100,000
 - 10,000 to 50,000
 - 2,000 to 10,000
 - Less than 2,000
- ROADS**
- Dual highway
 - All weather, hard surface
 - More than two lanes wide
 - Two lanes wide
 - One lane wide
 - All weather, loose or light surface
 - More than two lanes wide
 - Two lanes wide
 - One lane wide
 - Fair or dry weather, loose surface
 - Track or road
 - Route marker
- RAILROADS**
- Normal gauge 1.52m (5')
 - Narrow gauge
 - Railroad station: Position known; Position unknown
- BOUNDARIES**
- International
 - First-order administrative division
 - Second-order administrative division
 - Reservation
- OTHER FEATURES**
- Lighthouse
 - Horizontal control point
 - Level: Barial mound
 - Mine
 - Dam or lock: Sand
 - Dunes: Crescent; Lateral; Ripple
- VEGETATION**
- Woods
 - Orchard or vineyard
- HYDROGRAPHY**
- Well: Perennial; Intermittent
 - Intermittent streams: Single; Double line
 - Disappearing stream; Swamp or marsh
 - Intermittent lake; Dry lake
- TERRAIN ELEVATIONS**
- Spot elevation: normal; critical
 - HIGHEST KNOWN ELEVATION IS 242 meters at the following coordinates:
Geographic 50°50'N 35°48'E
Grid XB9636
- AERODROMES (Military or Civil)**
- Runway pattern known
 - Runway pattern unknown
- HELIPORT**
- VISUAL AIDS AND OBSTRUCTIONS**
- Obstruction
 - Group obstruction
 - Radio facility obstruction
 - Power transmission line

MOSKVA
KUMERTAU
Okha
Kuva
Kart

4 LANES DUAL
3 LANES
2 LANES
1 LANE

SINGLE TRACK
MULTIPLE TRACK

INTERNATIONAL
FIRST-ORDER ADMINISTRATIVE DIVISION
SECOND-ORDER ADMINISTRATIVE DIVISION
RESERVATION

LIGHTHOUSE
HORIZONTAL CONTROL POINT
LEVEL: BARRIAL MOUND
MINE
DAM OR LOCK: SAND
DUNES: CRESCENT; LATERAL; RIPPLE

WOODS
ORCHARD OR VINEYARD

WELL: PERENNIAL; INTERMITTENT
INTERMITTENT STREAMS: SINGLE; DOUBLE LINE
DISAPPEARING STREAM; SWAMP OR MARSH
INTERMITTENT LAKE; DRY LAKE

SPOT ELEVATION: NORMAL; CRITICAL
HIGHEST KNOWN ELEVATION IS 242 METERS AT THE FOLLOWING COORDINATES:
Geographic 50°50'N 35°48'E
Grid XB9636

RUNWAY PATTERN KNOWN
EDNA 221

HELIPORT

OBSTRUCTION
338 Elevation of obstruction top, above sea level
179 Elevation of obstruction top, above ground level
GROUP OBSTRUCTION
RADIO FACILITY OBSTRUCTION
POWER TRANSMISSION LINE

CAUTION
Vertical obstructions, including powerlines, have been extracted from the most reliable sources available. However, there is no assurance that all are shown, or that their locations or heights are exact.

MAGNETIC DECLINATION FOR 1985 IS 6° (110 MILS) EASTERLY OVER THE ENTIRE AREA.

LOCATION DIAGRAM
(LINE INDEX SHOWN IN BLUE)
(WAC INDEX SHOWN IN RED/BROWN)

Prepared and published by the Defense Mapping Agency
Hydrographic/Topographic Center, Washington, D. C.
Compiled in 1983.

CONVERSION OF ELEVATIONS

METERS	FEET	METERS	FEET
1000	3281	10000	32808
900	2953	9000	29528
800	2625	8000	26247
700	2297	7000	22966
600	1969	6000	19685
500	1641	5000	16404
400	1313	4000	13123
300	984	3000	9842
200	656	2000	6562
100	328	1000	3281

SCALE 1:250,000
SUMY, SOVIET UNION

SERIES 1501
SHEET NM 36-6
EDITION 2

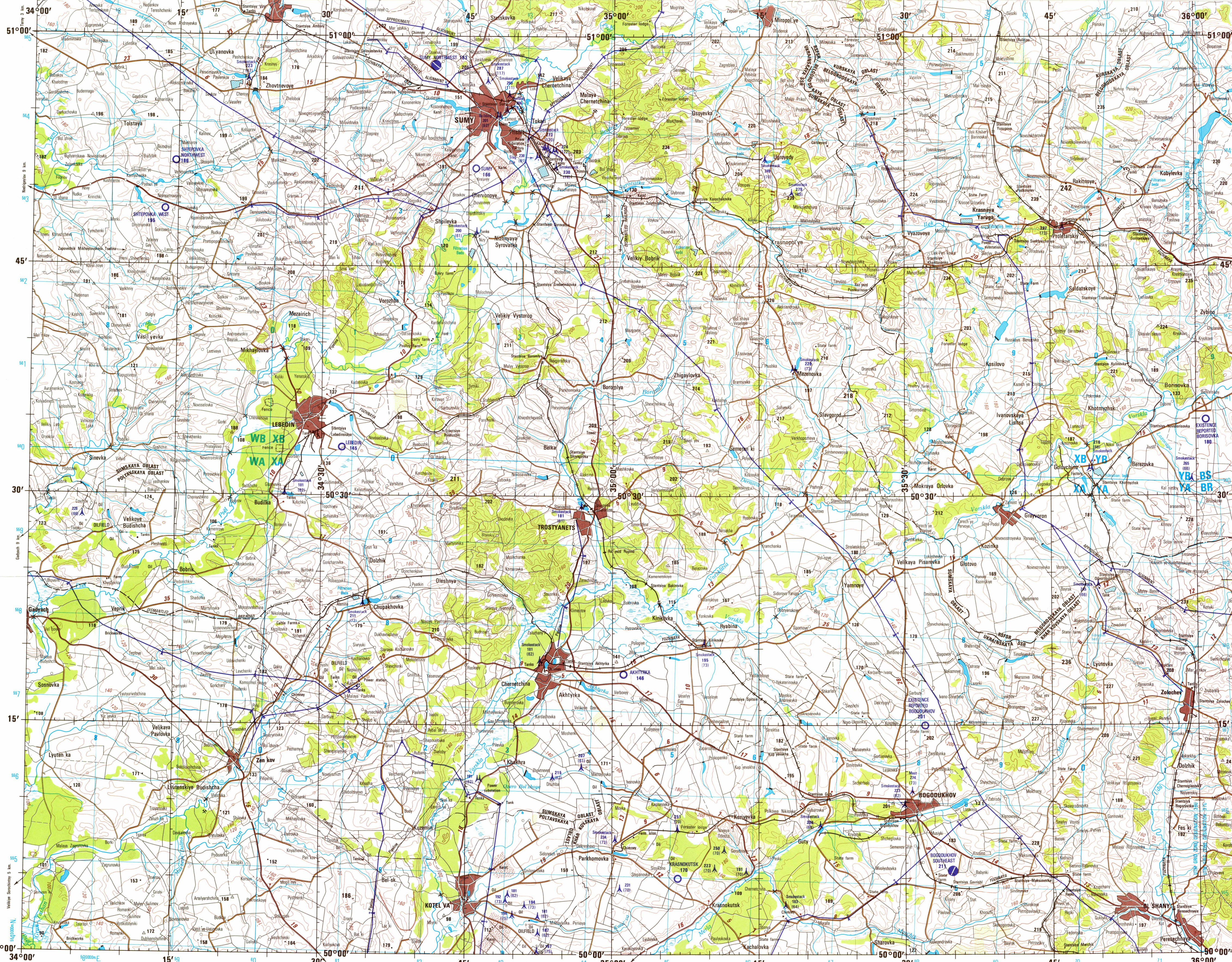
LIMITED DISTRIBUTION Distribution authorized to DoD, NSA (E.O. 12958), and other agencies. Release authorized to U.S. DoD customers only. U.S. GPO: 1983-246-7000. Other orders request to head quarters, NIMA, 4770 Pegasus Office, Stop P-25, Dayton, OH 45424-1000. Use only if the cover is not present.

RELIABILITY OF THIS GRAPHIC
Compiled from best available source materials.

Horizontal Datum: World Geodetic System
Vertical Datum: Mean Sea Level
Transverse Mercator Projection

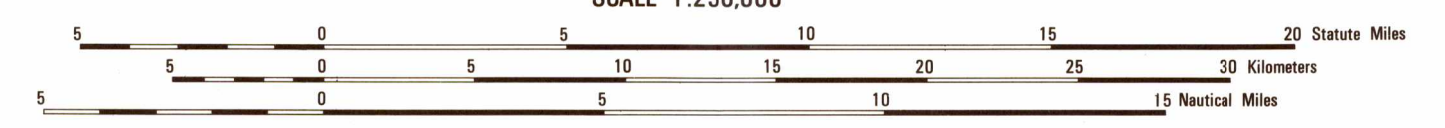
NSN 7643014047430
NIMA REF. NO. 1501XNM3606

ED. NO. 002



JOINT OPERATIONS GRAPHIC

SCALE 1:250,000
ELEVATIONS IN METERS



CONTOUR INTERVAL 20 METERS

BLUE NUMBERED LINES INDICATE THE 10,000 METER UNIVERSAL TRANSVERSE MERCATOR GRID, ZONE 36, WORLD GEODETIC SYSTEM SPHEROID

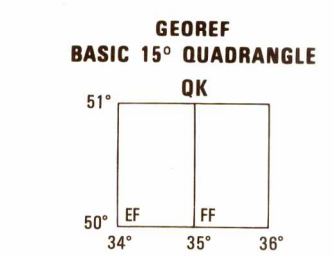
SAMPLE 1,000 METER REFERENCE

- Read lines, identifying the 10000 meter square in which the point lies.
- Read top number (labeling on VERTICAL grid line to left of point).
- Read bottom number (labeling on HORIZONTAL grid line below point).
- Read top number (labeling on VERTICAL grid line to right of point).
- Read bottom number (labeling on HORIZONTAL grid line below point).

GRID ZONE DESIGNATION
36U

GLOSSARY

- Oblast - second-order administrative division
- Osro - lake
- Rail - railroad
- R.S.F.S.R. - Russian Siding
- S.S.R. - first-order administrative division
- Stanytsya - State farm
- Zapovednik - preserve



NOTES
Powerlines are shown except within populated place limits. Other obstructions are shown if they are 61 meters or more above ground level. See caution note.
On this graphic a line is generally considered as being 2.5 meters (8 feet) in width.
Alignment of all boundaries is approximate.
Figures along roads indicate approximate distances in kilometers.

Reprint by NIMA 01-00

NSN 7643014047430
NIMA REF. NO. 1501XNM3606

ED. NO. 002