

SERIES 1501  
SHEET NL 48-3  
EDITION 1

- POPULATED PLACES**
- Named
  - Unnamed
- First importance: **ULANBAATAR**  
 Second importance: **CHOYBASAN**  
 Third importance: **MÖRÖN**  
 Fourth importance: **Dzanin Üüd**  
 Fifth importance: **Selgar**
- ROADS**
- All weather, hard surface
  - Two or more lanes
  - One lane
  - All weather, loose or light surface
  - Two or more lanes
  - One lane
  - Fair or dry weather, loose surface
  - Track or trail
- RAILROADS**
- Normal gauge 152 m (51')
  - Narrow gauge
  - Station, approximate location
- BOUNDARIES**
- International
  - First order administrative division
  - Reservation
- VEGETATION**
- Woods
  - Forest
  - Barren
  - Open
  - Shrub
  - Grass
  - Marsh
  - Swamp
  - Ice
  - Snowfield
- HYDROGRAPHY**
- Perennial stream
  - Intermittent stream
  - Disappearing stream
  - Swamp or marsh
  - Intermittent lake
  - Dry lake
- OTHER FEATURES**
- Glacier
  - Snowfield
  - Horizontal control point
  - Landmark
  - Mine
- AERODROMES (Military or Civil)**
- EDNA
  - 221
  - Field limits with runway pattern
  - EDNA-Name
  - 221-Elevation
  - Field limits, with runway pattern unknown
  - Field limits unknown, with runway pattern
  - Field limits and runway pattern unknown
- SEAPLANE BASE**
- SEAPLANE EMERGENCY**
- HELIPORT**
- VISUAL AIDS AND OBSTRUCTIONS**
- Obstruction
  - 338-Elevation of obstruction top, above sea level
  - (79)-Elevation of obstruction top, above ground level
  - Group obstruction
  - Radio facility obstruction
  - Power transmission line

1970 MAGNETIC DECLINATION FROM TRUE NORTH VARIES FROM 3° 15' WESTERLY FOR THE CENTER OF THE WEST EDGE TO 4° 17' WESTERLY FOR THE CENTER OF THE EAST EDGE.

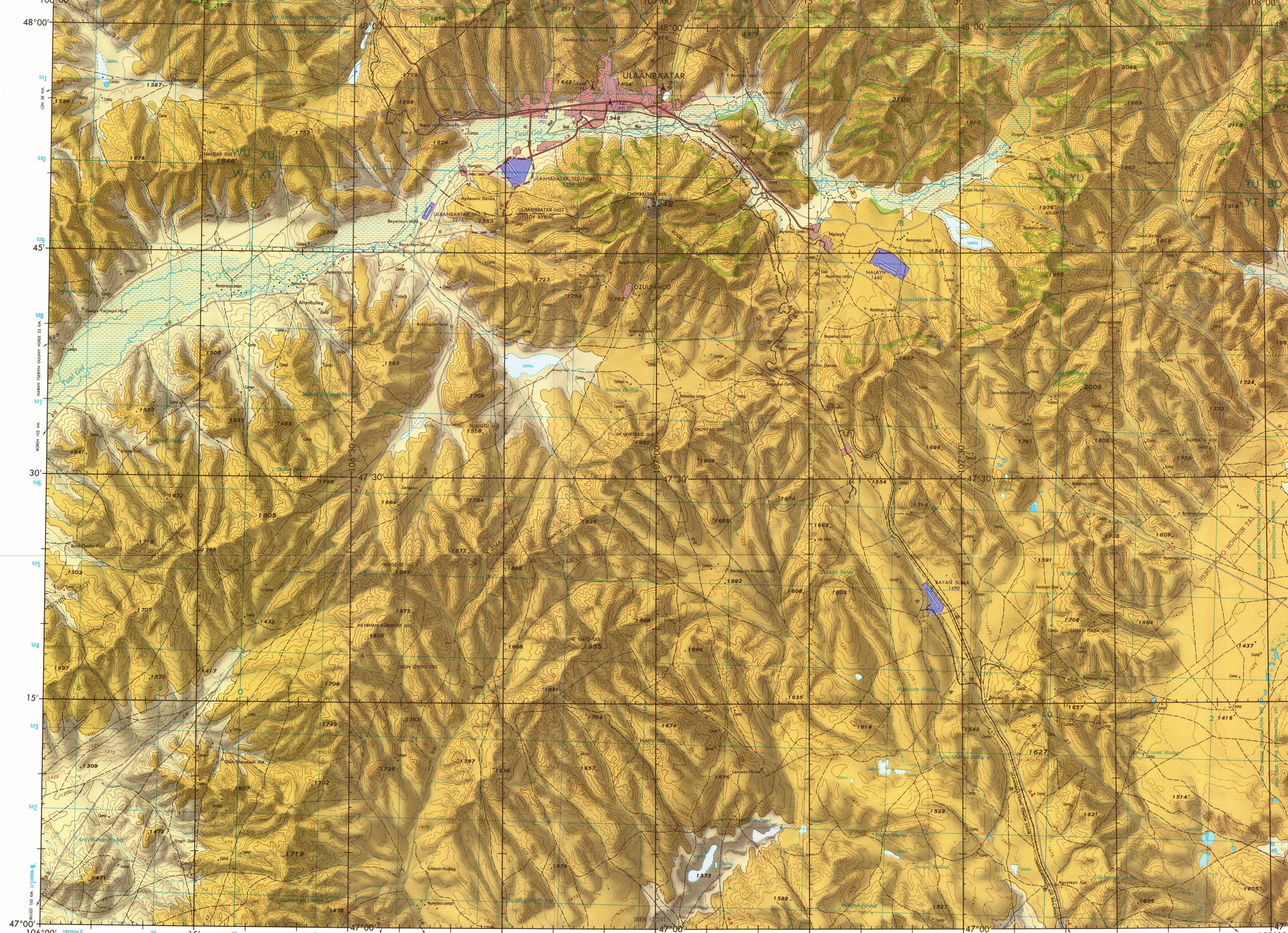
**LOCATION DIAGRAM**  
(ONE INDEX SHOWN IN BLUE)

102°-104° W (WAC INDEX SHOWN IN RED/BROWN)				112°			
NM 48-7	NM 48-8	NM 48-9	NM 48-10	NM 48-11	NM 48-12	NM 48-13	NM 48-14
NI 48-1	NI 48-2	NI 48-3	NI 48-4	NI 48-5	NI 48-6	NI 48-7	NI 48-8
MONGOLIA				PEOPLES REPUBLIC OF CHINA			
CHILIAN							

**LIMITED DISTRIBUTION** Distribution authorized to DOD, IAW 10 U.S.C. 4052, 4053, 4054. Release authorized to U.S. DOD contractors, IAW 48 C.F.R. 101-11.6, 101-11.7, 101-11.8. Refer other requests to Head Office, NIMA, ATTN: Sales Office, Dept 750, Suite 200, 4815 Lees Ferry Road, Fort Belvoir, CO 80145.

**SCALE 1:250,000**  
**ULANBAATAR, MONGOLIA**

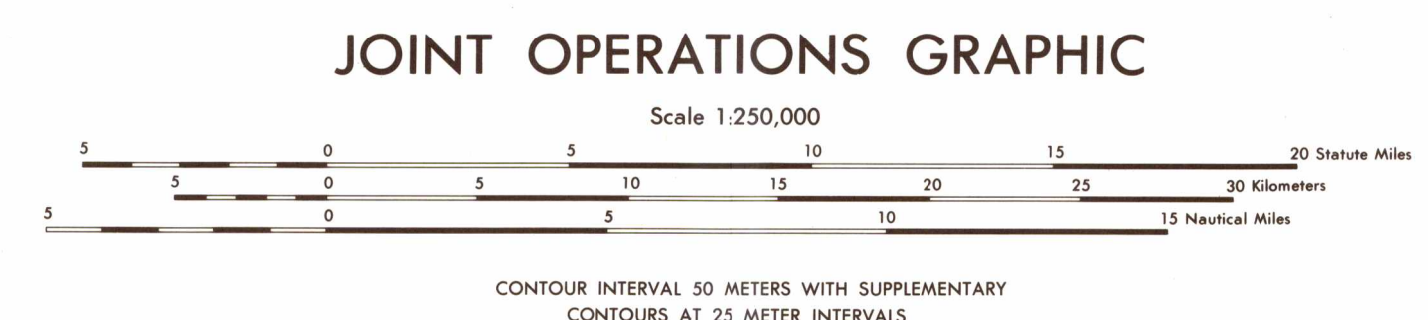
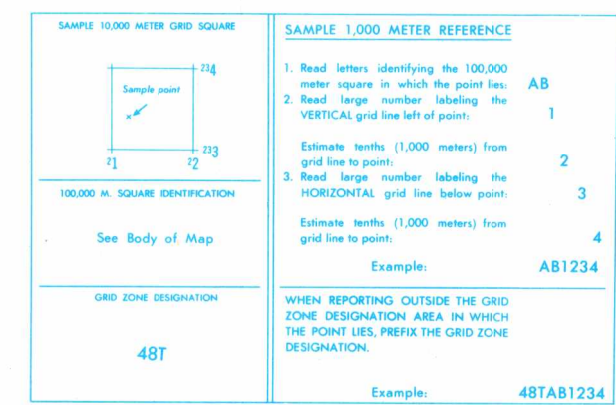
SERIES 1501  
SHEET NL 48-3  
EDITION 1



Prepared and published by the Defense Mapping Agency Topographic Center, Washington, D. C. Compiled March 1974.

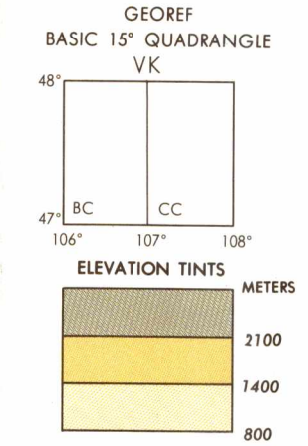
**CONVERSION OF ELEVATIONS**

METERS	FEET	METERS	FEET
1000	3281	10000	32808
500	1640	5000	16404
200	656	2000	6562
100	328	1000	3281



ELEVATIONS IN METERS

- GLOSSARY**
- Aymag ..... province
  - Bagaj ..... spring
  - Davaa ..... mountain pass
  - Gol ..... river
  - Govi ..... salt marsh
  - Hudag ..... municipality
  - Huree ..... wall
  - Nuur ..... temple, monastery
  - Nuur ..... mountain range
  - Nuur ..... lake
  - Onon ..... cairn
  - Rashan ..... warm spring
  - Tal ..... plain, steppe
  - Tomir Dzam ..... railroad
  - Uul ..... mountain



**RELIABILITY OF THIS GRAPHIC**

Compiled from best available source materials

Horizontal Datum (area of World Geodetic System 1966 Spheroid): World Geodetic System 1966  
 Horizontal Datum (area of International Spheroid): Nanking  
 Vertical Datum: Approximate MSL  
 Transverse Mercator Projection

**NOTES**

THIS GRAPHIC IS NOT AN AUTHORITY ON INTERNATIONAL BOUNDARIES.

Only obstructions 61 meters or more above ground level are shown.

The information on obstructions is not necessarily complete.

Road classification should be referred to with caution.

On this graphic a line is generally considered as being 8 to 16 feet (2.44 to 4.88 meters) in width.

Figures along roads indicate approximate distances in kilometers.

NAMES ON THIS GRAPHIC DO NOT NECESSARILY INDICATE OFFICIAL RECOGNITION OF THE POLITICAL STATUS OF THE AREA CONCERNED.

THE INTERNAL ADMINISTRATIVE BOUNDARIES ARE NOT TO BE CONSIDERED AUTHENTICATIVE.

Alignment of all boundaries is approximate.

The reliability of vegetation information is undetermined.

Names for symbolized populated places are omitted where information is not available or where density of detail does not permit their inclusion.

Reprint by NIMA 01-00

NSN 7643014047347  
NIMA REF. NO. 1501XNL4803