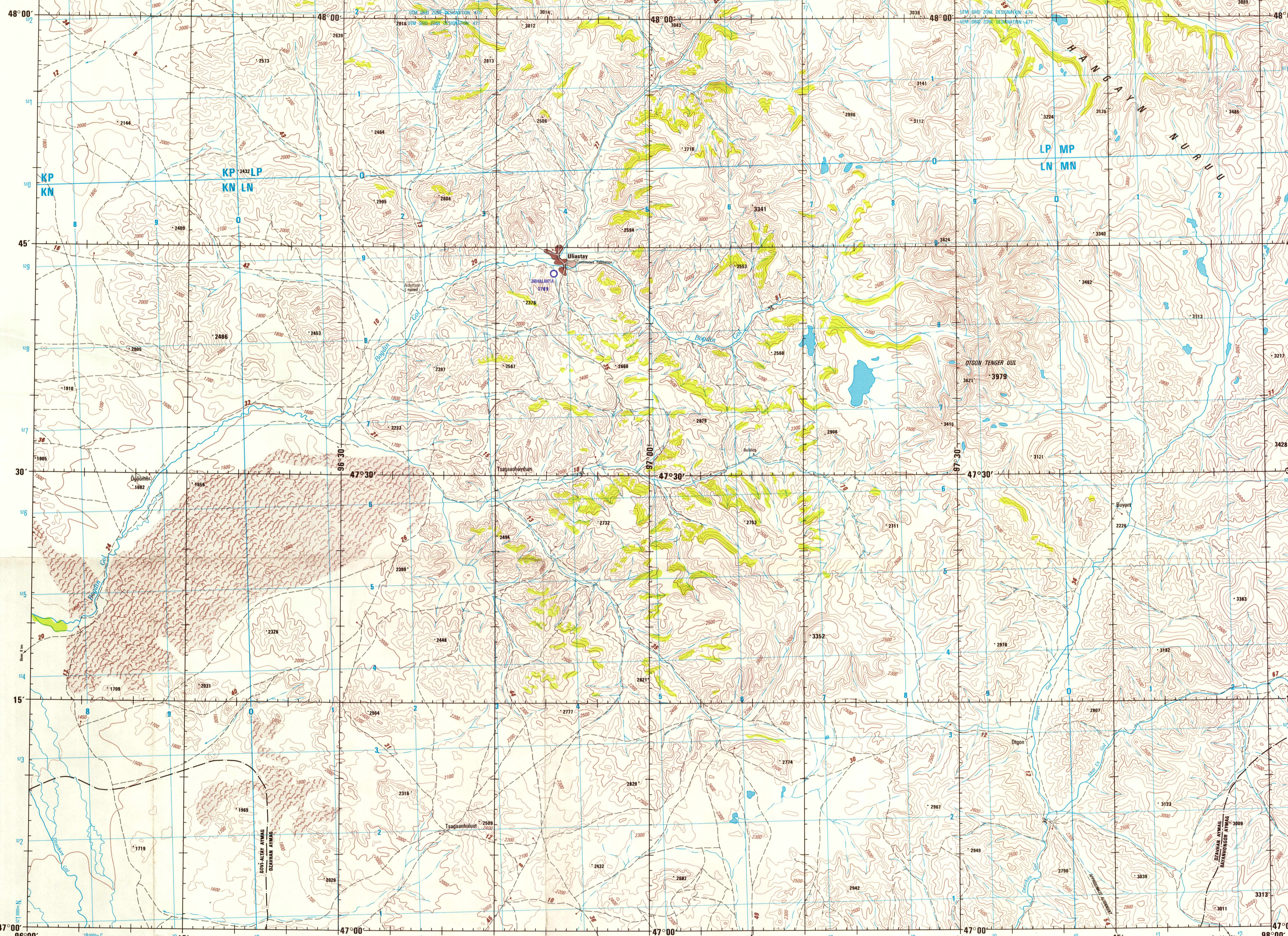


SERIES 1501
SHEET NL47-1
EDITION 1

- POPULATED PLACES**
- First importance ULAANBAATAR
 - Second importance CHOYBALSAN
 - Third importance Mörön
 - Fourth importance Dzanin Ud
 - Fifth importance Salgir
- ROADS**
- All weather, hard surface
More than two lanes wide 4 LINES
 - Two lanes wide
One lane wide
 - All weather, loose or light surface
More than two lanes wide
Two lanes wide
One lane wide
 - Fair or dry weather, loose surface
Cart track
 - Route marker
- RAILROADS**
- Normal gauge 1.44m (4'8 1/2") Single track
 - Narrow gauge
Station, position unknown
- BOUNDARIES**
- International
 - First-order administrative division
 - Reservation
- OTHER FEATURES**
- Landmark feature: Nomadic camp or corral; Mine
 - Horizontal control point
 - Levee
 - Dam
 - Sand
 - Dunes: Lateral; Ripple; Mounds
 - Crescent; Star; Transverse
- VEGETATION**
- Woods
- HYDROGRAPHY**
- Swamp or marsh; Rice
 - Intermittent lake; Dry lake
 - Land subject to inundation
 - Well; Spring
- TERRAIN ELEVATIONS**
- Spot elevation, Normal, Critical
 - HIGHEST KNOWN ELEVATION IS 3979 METERS AT THE FOLLOWING COORDINATES:
Geographic 47°36' N, 97°33' E
Grid LN5174
 - The accuracy of all elevations shown on this graphic is not within 30 meters.
- AERODROMES (Military or Civil)**
- EDNA
 - Field limits with runway pattern
 - Field limits, with runway pattern unknown
 - Field limits unknown, with runway pattern
 - Field limits and runway pattern unknown
- HELIPORT**
- VISUAL AIDS AND OBSTRUCTIONS**
- Obstruction
330' Elevation of obstruction top, above sea level
(75) Elevation of obstruction top, above ground level
 - Group obstruction
 - Radio facility obstruction
 - Power transmission line



CAUTION
Vertical obstructions, including powerlines, have been extracted from the most reliable sources available. However, there is no assurance that all are shown, or that their locations or heights are exact.

1985 MAGNETIC DECLINATION FROM TRUE NORTH VARIES FROM 1° (20 MILS) EASTERLY FOR THE CENTER OF THE WEST EDGE TO 0° (0 MILS) FOR THE CENTER OF THE EAST EDGE.

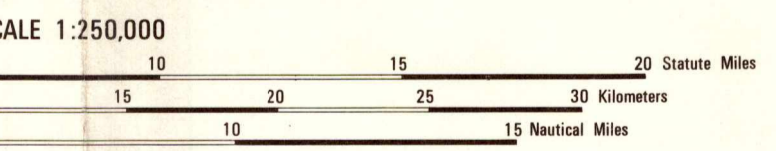
LOCATION DIAGRAM
(MNC INDEX SHOWN IN BLUE)
(WAC INDEX SHOWN IN RED/BROWN)

MM-8	MM-9	MM-10	MM-11	MM-12
MM-13	MM-14	MM-15	MM-16	MM-17
MM-18	MM-19	MM-20	MM-21	MM-22

USSR
MONGOLIA
CHINA

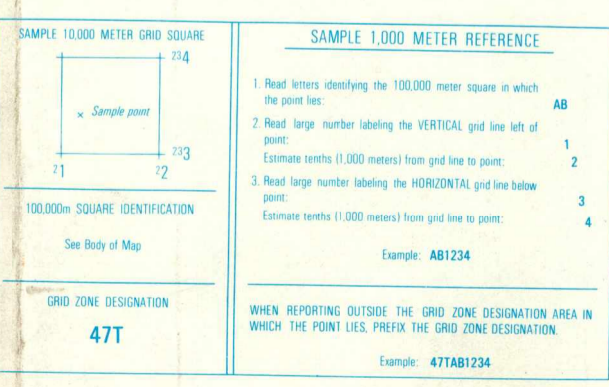
Prepared and published by the Defense Mapping Agency
Hydrographic / Topographic Center, Washington, D.C.
Compiled March, 1983.

JOINT OPERATIONS GRAPHIC



CONVERSION OF ELEVATIONS

METERS	FEET	METERS	FEET
1000	3281	10000	32808
900	2953	9000	29528
800	2625	8000	26247
700	2297	7000	22866
600	1969	6000	19685
500	1640	5000	16404
400	1312	4000	13123
300	984	3000	9842
200	656	2000	6562
150	492	1500	4921
100	328	1000	3281

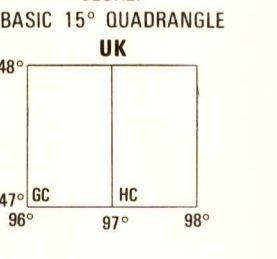


CONTOUR INTERVAL 100 METERS WITH SUPPLEMENTARY CONTOURS AT 50 METER INTERVALS

BLUE NUMBERED LINES INDICATE THE 10,000 METER UNIVERSAL TRANSVERSE MERCATOR GRID, ZONE 47 WORLD GEODESIC SYSTEM SPHEROID

USERS SHOULD REFER CORRECTIONS, ADDITIONS, AND COMMENTS FOR IMPROVING THIS PRODUCT TO:
US Users: Director, Defense Mapping Agency Hydrographic/Topographic Center, ATTN: PR, Washington, D.C. 20315-0030
UK Users: Directorate of Military Survey, Ministry of Defence, Elmwood Avenue, FELTHAM, Middlesex, England TW13 7AE

- GLOSSARY**
- Aymag first-order administrative division
 - Gol stream
 - Nurus mountain range
 - Uul mountain



NOTES

Road classification should be referred to with caution. On this graphic a lane is generally considered to be 2.44 to less than 5.5 meters (8 to less than 18 feet) in width. Alignment of all boundaries is approximate. The reliability of vegetation information is undetermined. Figures along roads indicate approximate distances in kilometers. Other obstructions are shown if they are 81 meters or more above ground level. See caution note. THE REPRESENTATION OF INTERNATIONAL BOUNDARIES IS NOT NECESSARILY AUTHORITY. Names for symbolized populated places are omitted where information is not available or where density of detail does not permit their inclusion.

RELIABILITY OF THIS GRAPHIC
Compiled from best available source materials.

Horizontal Datum: World Geodetic System
Vertical Datum: Mean Sea Level
Transverse Mercator Projection

SERIES 1501
SHEET NL47-1
EDITION 1

DMA STOCK NO. 1501XNL4701