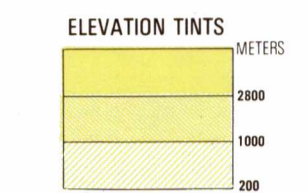


SERIES 1501
SHEET NK 43-7
EDITION 3



RELIABILITY OF THIS GRAPHIC
Compiled from best available source materials
Horizontal Datum: World Geodetic System
Vertical Datum: Mean Sea Level
Transverse Mercator Projection

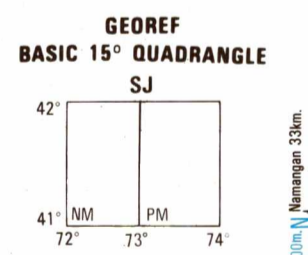
GLOSSARY
Gora mountain
Kanal canal
Khrebet mountain range
Oblast' second-order administrative division
Ozero lake
S.S.R. first-order administrative division
Stantsiya station
Vodokhranilishche reservoir

LOCATION DIAGRAM
(CIRC INDEX SHOWN IN BLUE)
(SQUARE INDEX SHOWN IN RED/BROWN)

NK 42-11	NK 43-4	NK 43-5
S 28	S 29	S 30
S 27	S 28	S 29
NK 42-12	NK 43-10	NK 43-11
S 26	S 27	S 28

CONVERSION OF ELEVATIONS

METERS	FEET	METERS	FEET
1000	3281	10000	32808
2000	6562	20000	65616
3000	9843	30000	98424
4000	13124	40000	131232
5000	16405	50000	164040
6000	19686	60000	196848
7000	22967	70000	229656
8000	26248	80000	262464
9000	29529	90000	295272
10000	32810	100000	328080

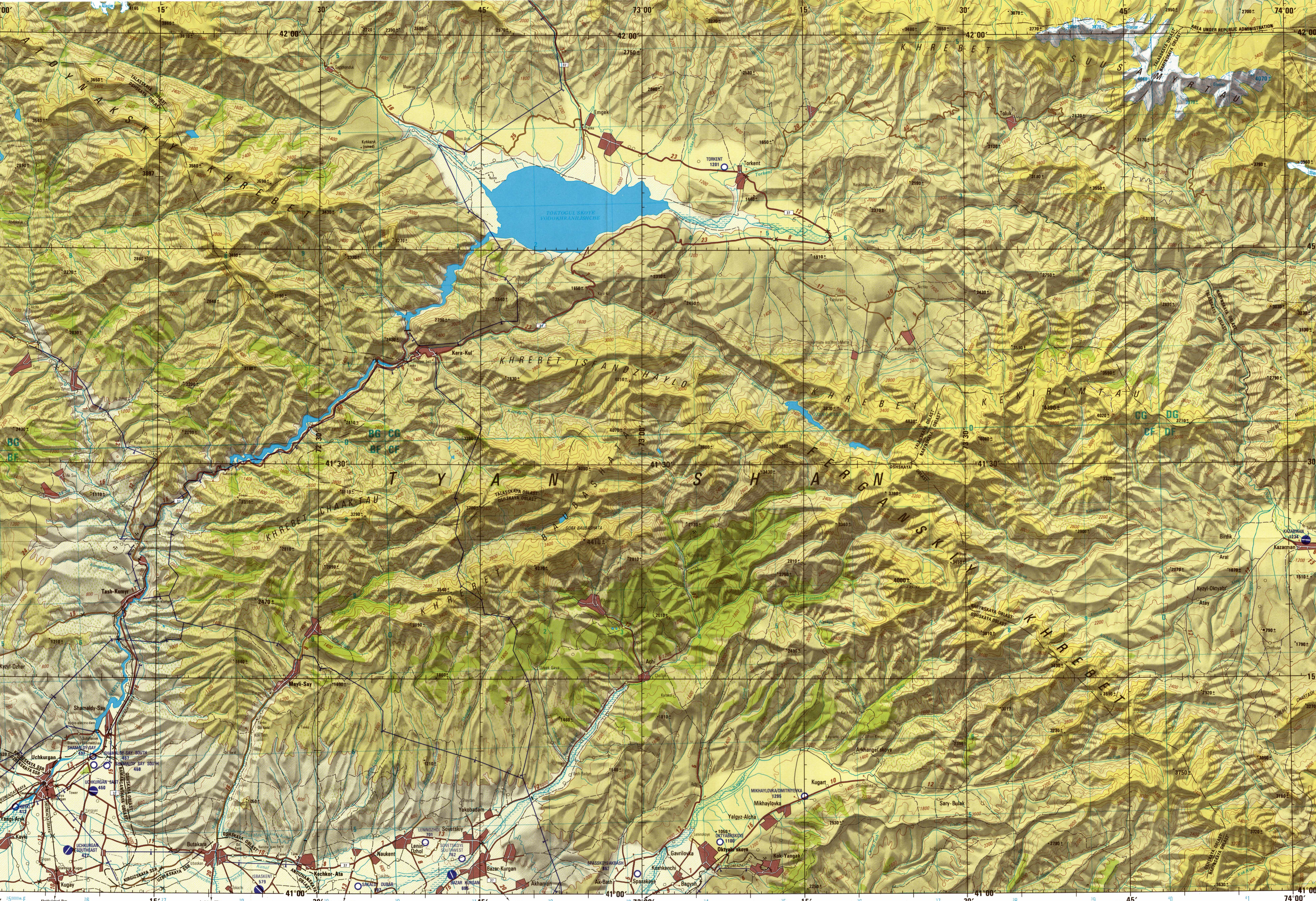


CAUTION
Vertical obstructions, including powerlines, have been extracted from the most reliable source available. However, there is no assurance that all are shown or that their locations or heights are exact.
1985 MAGNETIC DECLINATION FROM TRUE NORTH VARIES FROM 41° (80 MILS) EASTERLY FOR THE CENTER OF THE WEST EDGE TO 41° (70 MILS) EASTERLY FOR THE CENTER OF THE EAST EDGE.

LIMITED DISTRIBUTION
Distribution authorized to DOD, IAW 10 U.S.C. SEC. 1301 & 495. Release authorized to U.S. DoD contractors, IAW 10 U.S.C. SEC. 2324(b)(2). Release other requests to: Defense Mapping Agency, ATTN: Release Officer, Stop 325, Dayton, OH 45424-0325. Distribution of this Official Use Only. Removal of this notice is prohibited.

SCALE 1:250,000
TASH-KUMYR,
SOVIET UNION

SERIES 1501
SHEET NK 43-7
EDITION 3



Prepared and published by the Defense Mapping Agency
Hydrographic/Topographic Center, Washington, D. C.
Compiled September 1985.

POPULATED PLACES

Over 100,000	ALAMA-ATA
50,000 to 100,000	BALKHASH
10,000 to 50,000	Tatarsk
2,000 to 10,000	Farab
Less than 2,000	Kopyjevo

ROADS

Dual highway	4 LANES
More than two lanes wide	3 LANES
One lane wide	2 LANES
One lane wide	1 LANE
One lane wide	0 LANES

RAILROADS

Normal gauge (1.52m / 5')	Single track
Narrow gauge	Multiple track

BOUNDARIES

International	First-order administrative division
Second-order administrative division	Reservation

OTHER FEATURES

Landmark	Horizontal control point
Levee	Barral mound
Mine	All weather, loose or light surface
More than two lanes wide	Two lanes wide
One lane wide	One lane wide
Fair or dry weather, loose surface	Track or trail
Route marker	

VEGETATION

Woods: Scattered trees	Orchard, vineyard or plantation
------------------------	---------------------------------

CAUTION
Vertical obstructions, including powerlines, have been extracted from the most reliable source available. However, there is no assurance that all are shown or that their locations or heights are exact.
1985 MAGNETIC DECLINATION FROM TRUE NORTH VARIES FROM 41° (80 MILS) EASTERLY FOR THE CENTER OF THE WEST EDGE TO 41° (70 MILS) EASTERLY FOR THE CENTER OF THE EAST EDGE.

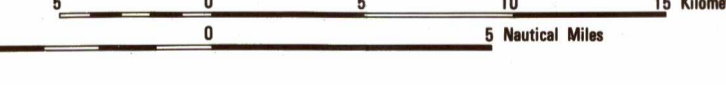
LIMITED DISTRIBUTION
Distribution authorized to DOD, IAW 10 U.S.C. SEC. 1301 & 495. Release authorized to U.S. DoD contractors, IAW 10 U.S.C. SEC. 2324(b)(2). Release other requests to: Defense Mapping Agency, ATTN: Release Officer, Stop 325, Dayton, OH 45424-0325. Distribution of this Official Use Only. Removal of this notice is prohibited.

SCALE 1:250,000
TASH-KUMYR,
SOVIET UNION

SERIES 1501
SHEET NK 43-7
EDITION 3

JOINT OPERATIONS GRAPHIC

SCALE 1:250,000



CONTOUR INTERVAL 200 METERS WITH
SUPPLEMENTARY CONTOURS AT 100 METERS

BLUE NUMBERED LINES INDICATE THE 10,000 METER UNIVERSAL TRANSVERSE MERCATOR GRID, ZONE 43, WORLD GEODETIC SYSTEM SPHEROID.

USERS SHOULD REFER TO CORRECTIONS, ADDITIONS, AND COMMENTS FOR IMPROVING THIS PRODUCT TO: DMA CUSTOMER HELP DESK, 1-800-468-0886, COMMERCIAL (314) 204-0032; OR WRITE TO: ATTN: CDD, MAIL STOP #37, NATIONAL MAPPING AND MAPPING AGENCY, 4600 SANDHAMMER ROAD, BETHESDA, MD 20816-0003

TERRAIN ELEVATIONS
Spot elevation: normal, critical, *504 *1900
HIGHEST KNOWN elevation: 4410 meters at the following coordinates:
Geographic: 41°24'N 72°54'E
Grid: CF2587
± following elevation value indicates accuracy is not within 30 meters.

HYDROGRAPHY
Well: Perennial/Intermittent
Intermittent streams: Single/Double line
Disappearing stream: Swamp or marsh
Intermittent lake: Dry lake

AERODROMES (Military or Civil)
Runway pattern known
EDNA—Name
221—Elevation
Runway pattern unknown

HELIPORT/HELIPAD
Well: Perennial/Intermittent
HELIPORT/HELIPAD AT HOSPITAL
VISUAL AIDS AND OBSTRUCTIONS
Obstruction
328 Elevation of obstruction top above sea level
(79) Elevation of obstruction top above ground level
Group obstruction
Radio facility obstruction
Power transmission line

NOTES
Powerlines are shown except within populated place tints. Other obstructions are shown if they are 61 meters or more above ground level. See caution note.
On this graphic, a lane is generally considered as being 2.5 meters (8 feet) in width.
Figures along roads indicate approximate distances in kilometers.
Alignment of all boundaries is approximate.
THE REPRESENTATION OF INTERNATIONAL BOUNDARIES IS NOT NECESSARILY AUTHENTIC.

Reprint by MMA 01-00

NSN 7643014047110
ED. NO. 003
NMA REF. NO. 1501XNK4307