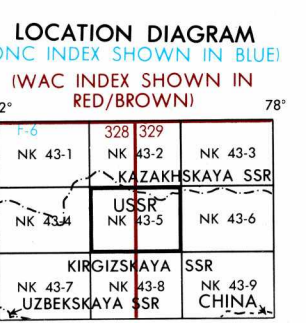


SERIES 1501
SHEET NK 43-5
EDITION 2

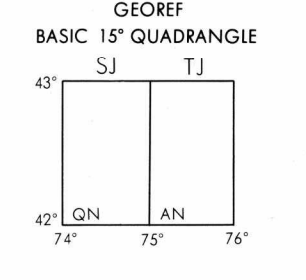
RELIABILITY OF THIS GRAPHIC
Compiled from best available source materials.
Horizontal Datum: World Geodetic System
Vertical Datum: Mean Sea Level
Transverse Mercator Projection

GLOSSARY
Gora mountain
Kanal canal
Khebet mountain range
Oblast' second-order administrative division
Oznovochnyy Punkt railroad stop
Ozero lake
Pereval pass
Pik peak
Raz'yezd passing siding
Sopka hill
SSR first-order administrative division
Stantsiya station
Uchokh'ye gorge
Vodokhranilishche reservoir

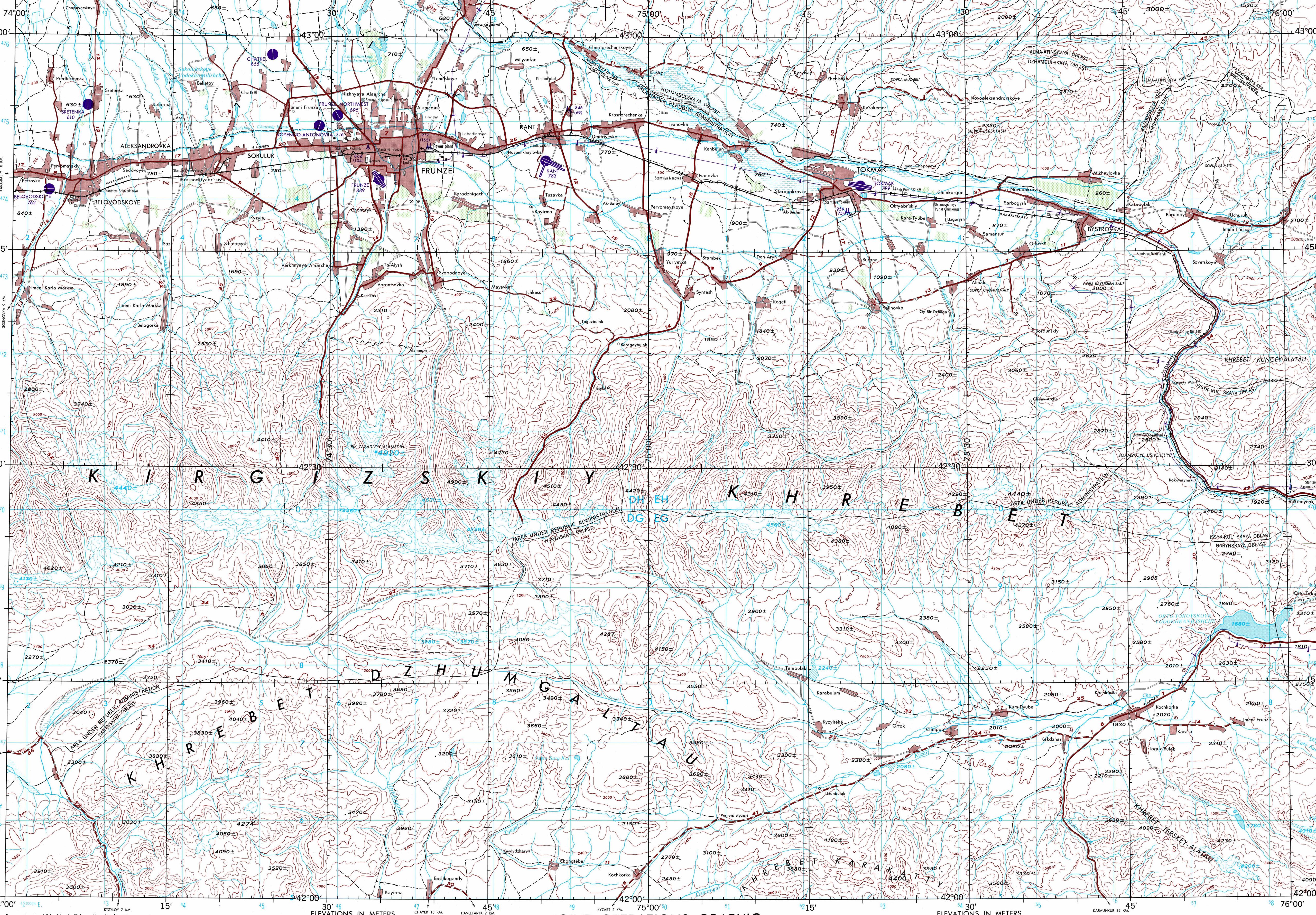


CONVERSION OF ELEVATIONS

METERS	FEET	METERS	FEET
1000	3281	10000	32808
900	2953	9000	29528
800	2625	8000	26247
700	2297	7000	22966
600	1969	6000	19685
500	1641	5000	16404
400	1313	4000	13123
300	984	3000	9842
200	656	2000	6562
150	492	1500	4921
100	328	1000	3281



MAGNETIC DECLINATION FOR 1975
IS 41° 30' EASTERLY OVER
THE ENTIRE AREA.



JOINT OPERATIONS GRAPHIC

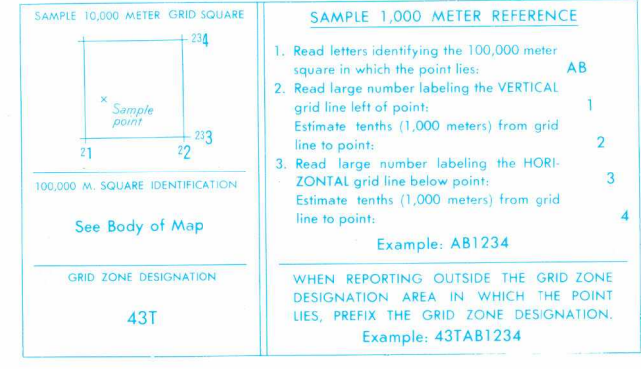
Scale 1:250,000
5 0 5 10 15 Statute Miles
5 0 5 10 15 Kilometers

CONTOUR INTERVAL 200 METERS WITH
SUPPLEMENTARY CONTOURS AT 100 METER INTERVALS

BLUE NUMBERED LINES INDICATE THE 10,000 METER UNIVERSAL TRANSVERSE MERCATOR GRID, ZONE 43, WORLD GEODETIC SYSTEM SPHEROID

USERS SHOULD REFER CORRECTIONS, ADDITIONS, AND COMMENTS TO THE NSA OPERATIONAL HELP DESK:
1-800-455-0899, COMMERCIAL 314-263-4884, DSN 693-4884, OR WRITE TO: DIRECTOR, NATIONAL GEOSPATIAL-
INTELLIGENCE AGENCY, ATTN: ES, MAIL STOP 1-800 SAIGANDHORE ROAD, BETHESDA, MD 20818-9003.

SCALE 1:250,000
FRUNZE, USSR
SERIES 1501
SHEET NK 43-5
EDITION 2



- POPULATED PLACES: Over 100,000, 50,000 to 100,000, 10,000 to 50,000, 2,000 to 10,000, Less than 2,000
- ROADS: All weather, hard surface; Two or more lanes; One lane; All weather, loose or light surface; Two or more lanes; Fat or dry weather, loose surface; Track or trail
- RAILROADS: Normal gauge 1,52m (5'); Station gauge; Station location: Exact, Approximate
- BOUNDARIES: International; First-order administrative division; Second-order administrative division
- VEGETATION: Woods (none shown), Orchard
- HYDROGRAPHY: Rice paddy; Land subject to inundation; Well; Perennial; Intermittent; Intermittent stream; Single, Double line; Disappearing stream; Swamp or marsh; Reservoir; Intermittent lake; Dry lake
- OTHER FEATURES: Glaciers; Snowfield; Horizontal control point; Landmark; Mine; levee; Dam or lock; Sand; Dunes; Crescent; Lateral; Ripple; Area name
- TERRAIN ELEVATIONS: Spot elevation: Normal, Critical; HIGHEST KNOWN ELEVATION is 4920± meters at 42°31'N, 74°34'E ± following elevation value indicates accuracy is not within 30 meters.

- AERODROMES (Military or Civil): EDNA 221; Field limits with runway pattern; EDNA Name; 221-Elevation; Field limits, with runway pattern unknown; Field limits unknown, with runway pattern; Field limits and runway pattern unknown
- SEAPLANE BASE
- SEAPLANE (EMERGENCY)
- HELIPORT
- VISUAL AIDS AND OBSTRUCTIONS: Obstruction 338; 338-Elevation of obstruction top, above sea level; 079-Elevation of obstruction top, above ground level; Group obstruction; Radio facility obstruction; Power transmission line

NOTES
Only obstructions 61 meters or more above ground level are shown.
The information on obstructions is not necessarily complete.
On this graphic a lane is generally considered as being 2.5 meters (8 feet) in width.
Road classification should be referred to with caution.
Figures along roads indicate approximate distances in kilometers.
Alignment of all boundaries is approximate.
THIS GRAPHIC IS NOT AN AUTHORITY ON INTERNATIONAL BOUNDARIES.

NSN 7643014047106
NGA Ref No 1501XNK4305
ED NO 002