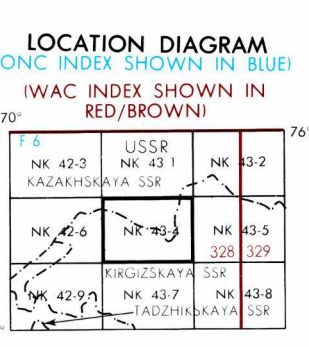


SERIES 1501
SHEET NK 43-4
EDITION 2

RELIABILITY OF THIS GRAPHIC
Compiled from best available source materials

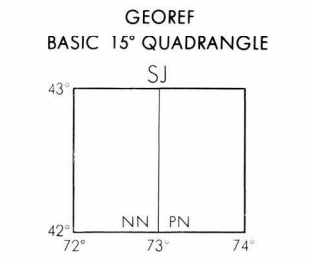
Horizontal Datum: World Geodetic System
Vertical Datum: Mean Sea Level
Transverse Mercator Projection

GLOSSARY
Khrebet mountain range
Oblast' second-order administrative division
Pervaya' first-order administrative division
Raz' yed' passing siding
SS R first-order administrative division
Stantsiya division station

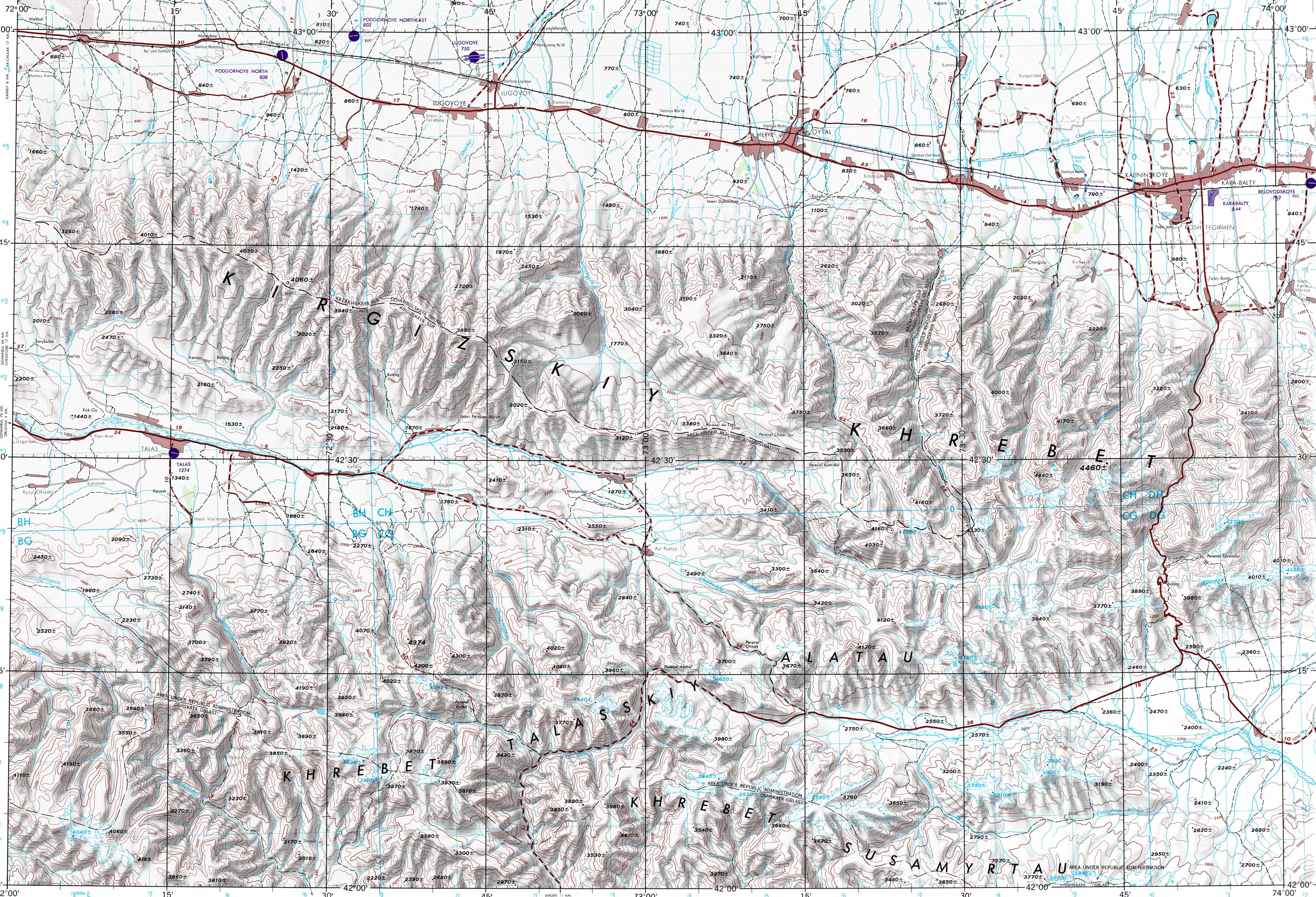


CONVERSION OF ELEVATIONS

| METERS | FEET | METERS | FEET |
|--------|------|--------|-------|
| 1000 | 3281 | 10000 | 32808 |
| 900 | 2953 | 9000 | 29528 |
| 800 | 2625 | 8000 | 26247 |
| 700 | 2297 | 7000 | 22966 |
| 600 | 1969 | 6000 | 19685 |
| 500 | 1640 | 5000 | 16404 |
| 400 | 1312 | 4000 | 13123 |
| 300 | 984 | 3000 | 9842 |
| 200 | 656 | 2000 | 6561 |
| 150 | 492 | 1500 | 4921 |
| 100 | 328 | 1000 | 3281 |



MAGNETIC DECLINATION FOR 1975 IS 4° 18' EASTERLY OVER THE ENTIRE AREA.



Prepared and published by the Defense Mapping Agency
Topographic Center, Washington, D. C. Compiled NOVEMBER 1977.

POPULATED PLACES

| Population | Symbol | Name |
|-------------------|-------------------|----------|
| Over 100,000 | Large circle | ALMA-ATA |
| 50,000 to 100,000 | Medium circle | BALKHASH |
| 10,000 to 50,000 | Small circle | TATARSK |
| 2,000 to 10,000 | Very small circle | Farab |
| Less than 2,000 | Dot | Kopyeovo |

ROADS

| Surface | Symbol | Symbol |
|------------------------------------|-------------|---------|
| All weather, hard surface | Double line | 3 LANES |
| Two or more lanes | Double line | 3 LANES |
| One lane | Single line | 3 LANES |
| Fair or dry weather, loose surface | Dashed line | 3 LANES |
| Track or trail | Dotted line | 3 LANES |

RAILROADS

| Type | Symbol | Symbol |
|--------------------------------------|------------------------------|-------------------------|
| Normal gauge, 1.52m (5') | Double line with cross-ticks | Single track |
| Narrow gauge | Double line with cross-ticks | Single track |
| Station location: Exact, Approximate | Circle with cross-ticks | Circle with cross-ticks |

BOUNDARIES

| Type | Symbol |
|--------------------------------------|---------------------------|
| International | Thick dashed line |
| First-order administrative division | Thin dashed line |
| Second-order administrative division | Thin solid line |
| Reservation | Thin solid line with dots |

VEGETATION

| Type | Symbol |
|--|-----------------------|
| Open | Stippled pattern |
| Rice paddy; land subject to inundation | Wavy lines |
| Wall; Personal, intermittent | Double line with dots |
| Intermittent stream; Swamp or marsh | Wavy line with dots |
| Disappearing stream; Dry lake | Wavy line with dots |
| Intermittent lake; Dry lake | Wavy line with dots |

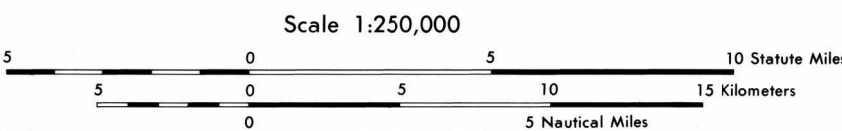
HYDROGRAPHY

| Type | Symbol |
|--|-----------------------|
| Rice paddy; land subject to inundation | Wavy lines |
| Wall; Personal, intermittent | Double line with dots |
| Intermittent stream; Swamp or marsh | Wavy line with dots |
| Disappearing stream; Dry lake | Wavy line with dots |
| Intermittent lake; Dry lake | Wavy line with dots |

OTHER FEATURES

| Type | Symbol |
|--|-------------------------|
| Glaciers; Snowfield | Stippled pattern |
| Horizontal control point; Landmark; Mine | Circle with cross-ticks |
| Leaves; Dam or lock; Sand | Stippled pattern |
| Dunes; Crescent; Lateral; Ripple | Stippled pattern |
| Area name | Circle with cross-ticks |
| Spot elevation: Normal, Critical | Circle with cross-ticks |
| TERRAIN ELEVATIONS | Circle with cross-ticks |
| Normal group, 1.52m (5') | Circle with cross-ticks |
| Narrow gauge | Circle with cross-ticks |
| Station location: Exact, Approximate | Circle with cross-ticks |

JOINT OPERATIONS GRAPHIC



CONTOUR INTERVAL 200 METERS WITH SUPPLEMENTARY CONTOURS AT 100 METER INTERVALS

BLUE NUMBERED LINES INDICATE THE 10,000 METER UNIVERSAL TRANSVERSE MERCATOR GRID, ZONE 43, WORLD GEODETIC SYSTEM, SPHEROID

USERS SHOULD REFER TO CORRECTIONS, ADDITIONS, AND COMMENTS TO THE NIMA OPERATIONAL HELP DESK: 1-800-455-0888; COMMERCIAL: 314-263-4864; DSN: 863-4864; OR WRITE TO DIRECTOR, NATIONAL IMAGERY AND MAPPING AGENCY, ATTN: ES, MAIL STOP 1-8, 4600 SANDHAMORE ROAD, BETHESDA, MD 20815-5003.

AERODROMES (Military or Civil)

| Type | Symbol |
|---|-------------------------|
| Field limits with runway pattern | Circle with cross-ticks |
| EDNA Name | Circle with cross-ticks |
| EDNA Elevation | Circle with cross-ticks |
| Field limits, with runway pattern unknown | Circle with cross-ticks |
| Field limits unknown, with runway pattern | Circle with cross-ticks |
| Field limits and runway pattern unknown | Circle with cross-ticks |
| SEAPLANE BASE | Circle with cross-ticks |
| SEAPLANE (EMERGENCY) | Circle with cross-ticks |
| HELIPORT | Circle with cross-ticks |

VISUAL AIDS AND OBSTRUCTIONS

| Type | Symbol |
|--|-------------------------|
| Obstruction | Circle with cross-ticks |
| 338 Elevation of obstruction top, above sea level | Circle with cross-ticks |
| 791 Elevation of obstruction top, above ground level | Circle with cross-ticks |
| Group obstruction | Circle with cross-ticks |
| Radio facility obstruction | Circle with cross-ticks |
| Power transmission line | Circle with cross-ticks |

NOTES
No obstructions 81 meters or more above ground level are known to exist in this area.
On this graphic a lane is generally considered as being 25 meters (8 feet) in width.
Road classification should be referred to with caution.
Figures along roads indicate distances in kilometers.
Alignment of all boundaries is approximate.

SCALE 1:250,000
TALAS, USSR

SERIES 1501
SHEET NK 43-4
EDITION 2

NSN 7643014047103
NIMA Ref No 1501XNK4304
ED. NO 002