

SERIES 1501
SHEET NH 44-10
EDITION 1

POPULATED PLACES

- First importance: NEW DELHI
- Second importance: BHOPAL
- Third importance: Durg
- Fourth importance: Ural
- Fifth importance: Oita
- District headquarters: Quito

ROADS

- All weather, hard surface: 3 LANES (More than two lanes wide), 2 LANES (Two lanes wide), 1 LANES (One lane wide)
- All weather, loose or light surface: 3 LANES (More than two lanes wide), 2 LANES (Two lanes wide), 1 LANES (One lane wide)
- Fair or dry weather, loose surface: 1 LANES (One lane wide)
- Track: Trail
- Route marker: International

RAILROADS

- Normal gauge 1.68m (5'6")
- Narrow gauge
- Station location: known; unknown

BOUNDARIES

- International
- First-order administrative division

VEGETATION

- Woods

OTHER FEATURES

- Rice paddy; Land subject to inundation
- Spring; Well; Paved; Intermittent
- Intermittent stream: Single; Double line
- Disappearing stream
- Wet sand; Dry lake
- Glacier; Glacial moraine
- Horizontal control point; Landmark; Mine
- Levee; Dam or lock; Sand
- Dunes; Crescent; Lateral; Ripple

TERRAIN ELEVATIONS

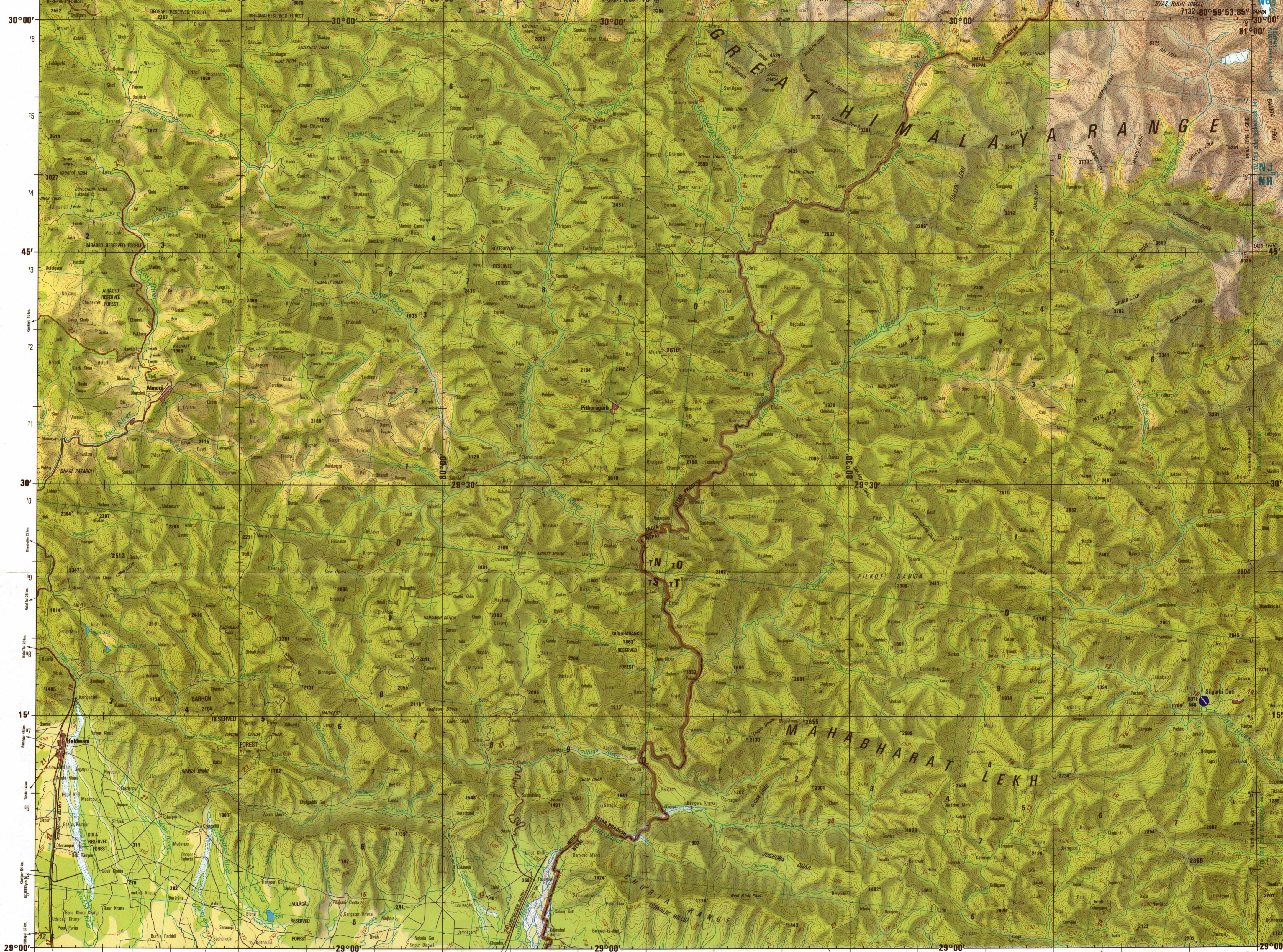
- Spot elevation: normal; critical: *276 *2513
- HIGHEST KNOWN elevation is 7132 meters at the following coordinates: Geographic: 30°00' N, 80°54' E Grid: 108080
- ± following elevation value indicates accuracy is not within 30 meters

AERODROMES (Military or Civil)

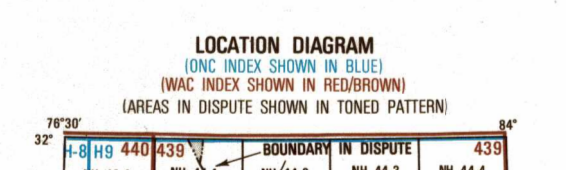
- Field limits with runway pattern: EDNA 221
- EDNA-Name: 221-Elevation
- Field limits, with runway pattern unknown
- Field limits unknown, with runway pattern
- Field limits and runway pattern unknown

HELIPORT

- Visual aids and obstructions: 338 (79)
- Obstruction: 338 (Elevation of obstruction top, above sea level; (79) Elevation of obstruction top, above ground level)
- Group obstruction
- Radio facility obstruction
- Power transmission line



MAGNETIC DECLINATION FOR 1980 IS 0° (0 MILS) OVER THE ENTIRE AREA.



Prepared and published by the Defense Mapping Agency Hydrographic/Topographic Center, Washington, D.C. Compiled November 1982.

CONVERSION OF ELEVATIONS

METERS	FEET	METERS	FEET
1000	3281	1000	3280
900	2953	900	2952
800	2625	800	2624
700	2297	700	2296
600	1969	600	1968
500	1641	500	1640
400	1313	400	1312
300	985	300	984
200	657	200	656
150	492	150	491
100	328	100	327

TO SHOW A STANDARD REFERENCE ON THIS SHEET TO NEAREST 1,000 YARDS

SAMPLE POINT: Elevation

- Read the elevation 1000 feet
- Locate the 1000-foot contour line
- Locate the 1000-foot contour line on the left of the point and read LARGE figures labeling the line
- Locate the 1000-foot contour line on the right of the point and read LARGE figures labeling the line
- Locate the 1000-foot contour line on the left of the point and read SMALL figures labeling the line
- Locate the 1000-foot contour line on the right of the point and read SMALL figures labeling the line

SAMPLE REFERENCE: N9121

USERS SHOULD REFER TO CORRECTIONS, ADDITIONS AND COMMENTS FOR IMPROVING THIS PRODUCT TO: (US Users) Director, Defense Mapping Agency, ATTN: PR, 8613 Lee Highway, Fairfax, VA 22031-2137. (UK Users) Directorate of Military Survey, Ministry of Defence, London.

JOINT OPERATIONS GRAPHIC

SCALE 1:250,000



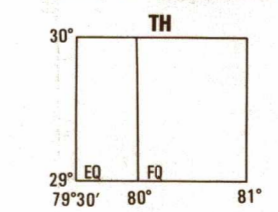
CONTOUR INTERVAL 100 METERS WITH SUPPLEMENTARY CONTOURS AT 25 METER INTERVALS

BLACK NUMBERED LINES INDICATE THE 10,000 YARD INDOA ZONE I GRID. DEVEST SPHEROID.

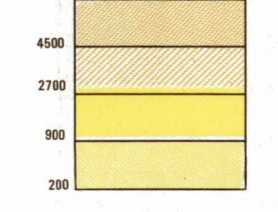
GLOSSARY

- Dhola: mountain
- Dhar: mountain range
- Dhara: stream
- Gid: stream
- Coahara: stream
- Gangli: stream
- Khola: stream
- Kosi: stream
- Leah: mountain range
- Nadi: stream
- Pardash: first-order administrative division
- Rau: stream
- Rauhar: stream
- Rau: stream
- Tal: lake
- Taba: mountain

BASIC 15° QUADRANGLE



ELEVATION TINTS



RELIABILITY OF THIS GRAPHIC

Compiled from best available source materials. Horizontal Datum: Indian Datum. Vertical Datum: Mean Sea Level. Transverse Mercator Projection.

483 Printed by the Defense Mapping Agency Hydrographic/Topographic Center. Lithographed by DMAAC 1-04.

NOTES

No obstructions 61 meters or more above ground level are known to exist within this area.

On this graphic a lane is generally considered as being 3 meters (10 feet) to 3.7 meters (12 feet) in width.

Figures along roads indicate approximate distances in kilometers.

THE REPRESENTATION OF BOUNDARIES IS NOT NECESSARILY AUTHORITY.

Powefine information and obstructions have been extracted from the most reliable source available. However, there is no assurance that all powefine and obstructions are shown or that their locations and heights are correct.

DMA STOCK NO. 1501XNH4410

ED NO. 001