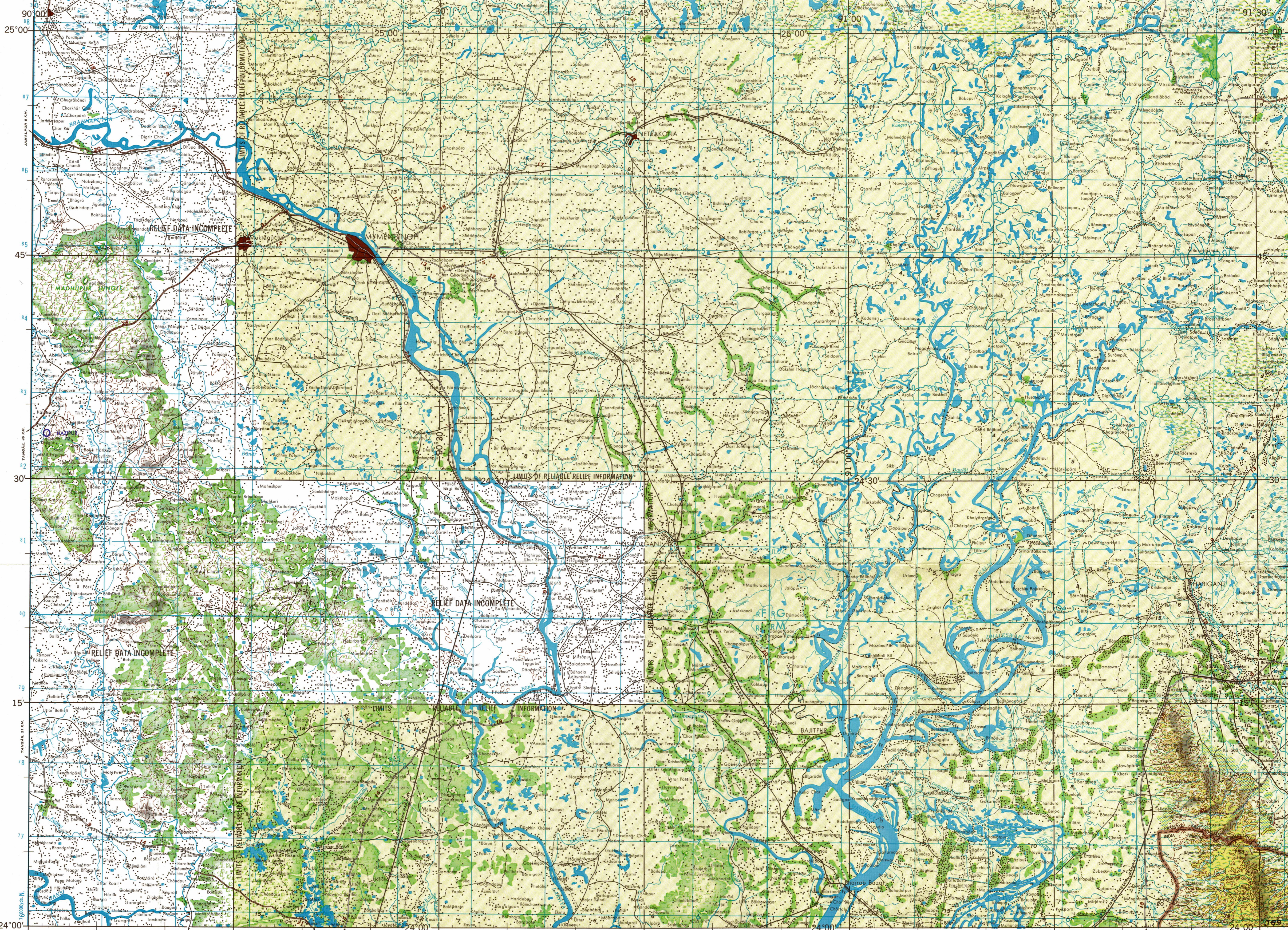


SERIES 1501
SHEET NG 46-13
EDITION 1

LEGEND

- POPULATED PLACES**
- Over 100,000
 - 50,000 to 100,000
 - 10,000 to 50,000
 - 5,000 to 10,000
 - Less than 5,000
- ROADS**
- Dual Highways, under construction
 - All weather
 - Hard surface, two or more lanes wide
 - Hard surface, one lane wide
 - Loose or light surface, two or more lanes wide
 - Loose or light surface, one lane wide
 - Fair or dry weather, loose surface
 - Cart track
 - Foot path, trail
- RAILROADS**
- Normal gauge 1.68m (5'6")
 - Narrow gauge
- BOUNDARIES**
- International
 - Province or state
 - Landmark feature
 - Mine
- TERRAIN ELEVATIONS**
- Highest known elevation is 169 meters located at 24°00'N 91°30'E
 - Spot elevation, normal; critical
 - Horizontal control point
- HYDROGRAPHY**
- Depth curve fathoms
 - Falls Rapids
 - Silt evaporator
 - Swamp or marsh
 - Mangrove
 - Reef, limit of danger
 - Rocks, Sunkers, Awash
 - Foreshore flat
 - Levee
 - Unclassified stream
- VEGETATION**
- Glacier, Glacial moraine
 - Woods: brushwood, plantation; Tropical grass
- AERODROMES**
- Field limits with runway patterns
 - EDNA - None
 - 227 - Elevation
 - Field limits, with runway patterns unknown
 - Field limits unknown, with runway patterns
 - Field limits and runway patterns unknown
- SEAPLANE BASE**
- SEAPLANE (EMERGENCY)**
- HELIPORT**
- VISUAL AIDS AND OBSTRUCTIONS**
- Obstruction
 - 338 - Elevation of obstruction top, above sea level
 - (79) - Elevation of obstruction top, above ground level
 - Group obstruction
 - Radio facility obstruction
 - Power transmission line
- NOTES**
- No obstructions 61 meters or more above ground level are known to exist within this area.
 - MAGNETIC VARIATION FOR 1965 IS APPROXIMATELY 1°W OVER THE ENTIRE AREA.
 - Figures along roads indicate approximate distances in kilometers.
 - THE REPRESENTATION OF INTERNATIONAL BOUNDARIES IS NOT NECESSARILY AUTHORITATIVE.



500,000 VARIOUS (Small Letters) and 100,000 VARIOUS (Large Letters) SQUARE IDENTIFICATIONS

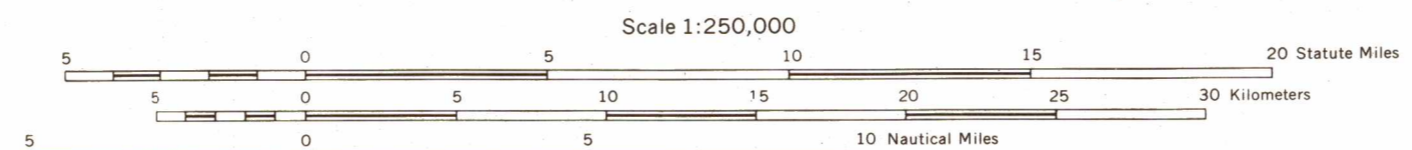
1	2	3	4
x	f	g	
l		m	

1. Read letter identifying 500,000 grid square in which the point lies.
2. Locate the vertical grid line to left of point and read LARGE letter identifying the line letter in the bottom margin, or on the top sheet.
3. Estimate tenths from grid line to point.
4. Locate the horizontal grid line and read SMALL letter identifying the line letter in the left margin, or on the top sheet.
5. Estimate tenths from grid line to point.

EXAMPLE IDENTIFICATION: 760000

Prepared under the direction of the Defense Intelligence Agency and published by the Aeronautical Chart and Information Center, U.S. Air Force, St. Louis, Missouri, 63118. Compiled from maps and intelligence information available as of November 1966.

JOINT OPERATIONS GRAPHIC (GROUND)



CONTOUR INTERVAL APPROXIMATELY 60 METERS (200 FEET) WITH SUPPLEMENTARY CONTOURS AT APPROXIMATELY 30 METERS (100 FEET)
RELIEF PARTIALLY SHOWN BY FORM LINES
VERTICAL DATUM: MEAN SEA LEVEL
HORIZONTAL DATUM: INDIAN DATUM
TRANSVERSE MERCATOR PROJECTION

BLUE NUMBERED LINES INDICATE THE 10,000 YARD INDIA ZONE'S GRID, EVEREST SPHEROID. THE LAST FOUR DIGITS OF THE GRID NUMBER ARE OMITTED.

USERS SHOULD REFER CORRECTIONS, ADDITIONS, AND COMMENTS TO THE NIMA CUSTOMER HELP DESK: 1-800-455-0800, COMMERCIAL 314-260-5032; USN 450-5032; OR WRITE TO: DIRECTOR, NATIONAL IMAGERY AND MAPPING AGENCY, ATTN: CDR, MAIL STOP P-37, 4800 SANGHVI ROAD, BETHESDA, MD 20815-5002.

GLOSSARY

- BH ... lake
- CHARA ... stream
- GANG ... stream
- Kas ... stream
- Khal ... stream
- Nadi ... stream

GEOREF BASIC 15° QUADRANGLE UH

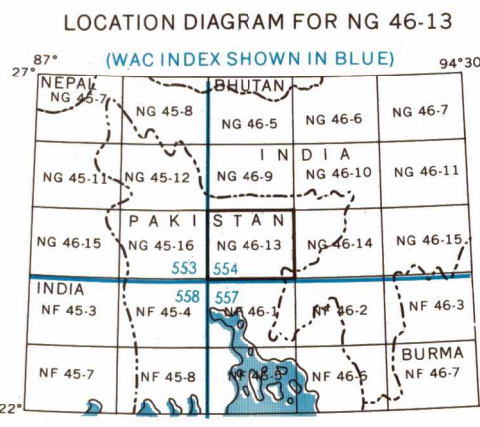
ELEVATION TINTS

Reprinted by NIMA 4-89

RELIABILITY OF THIS SHEET (as determined by standard practices)

MAP FEATURE	DATE OF INFORMATION
ALL FEATURES	1966

COMPILED FROM BEST AVAILABLE SOURCE MATERIALS



SCALE 1:250,000
MYMENSINGH, PAKISTAN

SERIES 1501
SHEET NG 46-13
EDITION 1

THIS GRAPHIC SUPERSEDES AMS US02, NG 46-13

NSN 7643014046165
NIMA REF. NO. 1501XNG4613

ED. NO. 001